



SUSE Multi-Linux Manager 5.1

Installation and Upgrade Guide

Chapter 1. Preface

Installation, Deployment and Upgrade
SUSE Multi-Linux Manager 5.1

This guide provides comprehensive, step-by-step instructions for deploying, upgrading, and managing SUSE Multi-Linux Manager Server and Proxy.

It is organized into the following sections:

- **Requirements:** Outlines the essential hardware, software, and networking prerequisites to ensure a smooth setup.
- **Deployment and Installation:** Guides you through deploying SUSE Multi-Linux Manager as a container and completing the initial configuration.
- **Upgrade and Migration:** Details the process for upgrading and migrating SUSE Multi-Linux Manager while minimizing downtime.
- **Basic Server Management:** Covers fundamental server operations, helping you get started with SUSE Multi-Linux Manager efficiently.

Publication Date: 2025-07-08

Copyright © 2011–2025 SUSE LLC and contributors. All rights reserved. Permission is granted to copy, distribute and/or modify this document under the terms of the GNU Free Documentation License, Version 1.2 or (at your option) version 1.3; with the Invariant Section being this copyright notice and license. A copy of the license version 1.2 is included in the section entitled **Legal › License**.

For SUSE trademarks, see <https://www.suse.com/company/legal/> . All third-party trademarks are the property of their respective owners. Trademark symbols (®, ™ etc.) denote trademarks of SUSE and its affiliates. Asterisks (*) denote third-party trademarks. All information found in this book has been compiled with utmost attention to detail. However, this does not guarantee complete accuracy. Neither SUSE LLC, its affiliates, the authors nor the translators shall be held liable for possible errors or the consequences thereof.

Contents

1. Preface	1
2. Requirements	5
2.1. General Requirements	5
2.1.1. SUSE Customer Center Account and Credentials	5
2.1.2. Supported Browsers for SUSE Multi-Linux Manager Web UI	5
2.1.3. SSL Certificates	6
2.2. Hardware Requirements	6
2.2.1. Server Requirements	6
2.2.2. Proxy Requirements	8
2.2.3. Swap space	9
2.2.4. Database Requirement	9
2.2.5. Persistent Storage and Permissions	10
2.2.6. Logical Volume Management (LVM)	11
2.3. Network Requirements	11
2.3.1. Fully Qualified Domain Name (FQDN)	12
2.3.2. Hostname and IP Address	12
2.3.3. Reenable router advertisements	12
2.3.4. Deployment behind HTTP or HTTPS OSI level 7 proxy	13
2.3.5. Air-gapped Deployment	13
2.3.6. Required Network Ports	14
2.4. Public Cloud Requirements	20
2.4.1. Network Requirements	21
2.4.2. Prepare Storage Volumes	21
3. Installation and Deployment	23
3.1. Install SUSE Multi-Linux Manager Server	23
3.1.1. SUSE Multi-Linux Manager 5.1 Server Deployment	23
3.1.2. SUSE Multi-Linux Manager 5.1 Server Deployment as a Virtual Machine - KVM	33
3.1.3. SUSE Multi-Linux Manager 5.1 Server Deployment as a Virtual Machine - VMware	39
3.1.4. SUSE Multi-Linux Manager Server Air-gapped Deployment	42
3.1.5. Public Cloud Deployment	45
3.2. Install SUSE Multi-Linux Manager Proxy	45
3.2.1. SUSE Multi-Linux Manager 5.1 Proxy Deployment	45
3.2.2. Proxy conversion from client	56
3.2.3. SUSE Multi-Linux Manager Proxy Deployment as a Virtual Machine - KVM	57
3.2.4. SUSE Multi-Linux Manager Proxy Deployment as a Virtual Machine - VMware	67
3.2.5. SUSE Multi-Linux Manager 5.1 Proxy Deployment on K3s	73
3.2.6. SUSE Multi-Linux Manager Proxy Air-gapped Deployment	76
4. Upgrade and Migration	78
4.1. Server	78
4.1.1. Distribution Upgrade and Server Migration	78
4.1.2. SUSE Multi-Linux Manager Server Migration to a Containerized Environment	83
4.1.3. SUSE Multi-Linux Manager Server Upgrade	92
4.2. Proxy	93
4.2.1. Proxy Migration	93
4.2.2. Proxy Migration	98

4.2.3. SUSE Multi-Linux Manager Proxy Upgrade	100
4.3. Clients	101
4.3.1. Upgrade Clients	101
5. Basic Server and Proxy Management	102
5.1. Custom YAML Configuration and Deployment with mgradm	102
5.2. Starting and Stopping Containers	103
5.3. Containers used by SUSE Multi-Linux Manager	103
5.4. Persistent Container Volumes	104
5.4.1. Server	104
5.4.2. Proxy	106
5.5. Persistent Container Volumes	106
5.5.1. Server	107
5.5.2. Proxy	108
6. GNU Free Documentation License	110

Chapter 2. Requirements

2.1. General Requirements

Before you begin installation, ensure that you have:

1. A SUSE Customer Center account. This account gives you access to organization credentials and registration keys for SUSE Multi-Linux Manager Server, Proxy and Retail Branch Server.
2. Supported Browsers for SUSE Multi-Linux Manager Web UI.
3. SSL certificates for your environment. By default SUSE Multi-Linux Manager 5.1 uses a self-signed certificate.



The SL Micro 6.1 entitlement is included within the SUSE Multi-Linux Manager entitlement, so it does not require a separate registration key.

The following section contains more information on these requirements.

2.1.1. SUSE Customer Center Account and Credentials

Create an account with SUSE Customer Center prior to deployment of SUSE Multi-Linux Manager 5.1.

Procedure: Obtain Your Organization Credentials

1. Navigate to <https://scc.suse.com/login> in your web browser.
2. Log in to your SCC account, or follow the prompts to create a new account.
3. If you have not yet done so, click **[Connect to an Organization]** and type or search for your organization.
4. Click **[Manage my Organizations]** and select your organization from the list by clicking the organization name.
5. Click the **[Users]** tab, and then select the **[Organization Credentials]** sub-tab.
6. Record your login information for use during SUSE Multi-Linux Manager setup.

Depending on your organization's setup, you might also need to activate your subscription, using the **[Activate Subscriptions]** menu from the left navigation bar.

For more information about using SCC, see <https://scc.suse.com/docs/help>.

2.1.2. Supported Browsers for SUSE Multi-Linux Manager Web UI

To use the Web UI to manage your SUSE Multi-Linux Manager environment, you must run an up to date web browser.

SUSE Multi-Linux Manager is supported on:

- Latest Firefox browser shipped with SUSE Linux Enterprise Server
- Latest Chrome browser on all operating systems
- Latest Edge browser shipped with Windows

Windows Internet Explorer is not supported. The SUSE Multi-Linux Manager Web UI will not render correctly under Windows Internet Explorer.

2.1.3. SSL Certificates

SUSE Multi-Linux Manager uses SSL certificates to ensure that clients are registered to the correct server. By default, SUSE Multi-Linux Manager uses a self-signed certificate. If you have certificates signed by a third-party CA, you can import them to your SUSE Multi-Linux Manager installation.

- For more on self-signed certificates, see **Administration › Ssl-certs-selfsigned**.
- For more on imported certificates, see **Administration › Ssl-certs-imported**.

2.2. Hardware Requirements

This table outlines hardware and software requirements for the SUSE Multi-Linux Manager Server and Proxy, on x86-64, ARM, ppc64le and s390x architecture.



SUSE Multi-Linux Manager installations based on ppc64le or s390x architecture cannot use secure boot for network booting clients. This limitation exists because the shim bootloader is not available for both these architectures.

For SUSE Multi-Linux Manager for Retail hardware requirements, see **Retail › Retail-requirements**.

2.2.1. Server Requirements

One of SL Micro 6.1 or SUSE Linux Enterprise Server 15 SP7 is the operating system of the container host.

In the following, SUSE Linux Enterprise Server as the installed host operating system is explicitly mentioned only if it matters. Otherwise we either write SL Micro or just host operating system.

The container host with SL Micro as operating system requires as free disk space:

- Minimum for base installation 100 GB
- Plus a minimum of 130 GB for repository data

Depending on the amount of selected software, SUSE Linux Enterprise Server as operating system can require considerably more disk space.

By default the SUSE Multi-Linux Manager Server container stores mirrored repository (packages or products), database, and other data in subdirectories of the `/var/lib/containers/storage/volumes/` directory. Repository synchronization fails if this directory runs out of disk space. Estimate how much space the `/var/lib/containers/storage/volumes/` directory requires based on the number and kind of clients and repositories you plan to mirror.

For more information about filesystem and partitioning details, see [installation-and-upgrade:hardware-requirements.pdf](#) and the detailed installation instructions in the Installation and Deployment sections of this guide.

Table 1. Server Hardware Requirements

Hardware	Details	Recommendation
CPU	x86-64, ARM, ppc64le or s390x	Minimum 4 dedicated 64-bit CPU cores
RAM	Minimum	16 GB
	Recommended	32 GB
Disk Space	/ (root directory)	40 GB
	<code>/var/lib/containers/storage/volumes</code>	Minimum 150 GB (depending on the number of products)
	<code>/var/lib/containers/storage/volumes/var-pgsql</code>	Minimum 50 GB
Swap space	Systems can benefit from additional swap space. SUSE recommends using a swap file instead of a swap partition. For more information about swap space, see installation-and-upgrade:hardware-requirements.pdf .	8 to 12 GB

The images by default have a 40 GB / partition. The cloud image of SL Micro 6.1 has just a 5 GB / partition. Both work flawlessly with SUSE Multi-Linux Manager. As long as external storage is mounted to `/var/lib/containers/storage/volumes`, SUSE Multi-Linux Manager does not need or use storage on the / partition, but leaves that to the management of the container host itself.



SUSE Multi-Linux Manager performance depends on hardware resources, network bandwidth, latency between clients and server, etc.

Based on the experience and different deployments that are in use, the advice for optimal

performance of SUSE Multi-Linux Manager Server with an adequate number of proxies is to not exceed 10,000 clients per single server. It is highly recommended to move to the Hub setup and involve consultancy when you have more than 10,000 clients. Even with fine-tuning and an adequate number of proxies, such a large number of clients can lead to performance issues.

For more information about managing a large number of clients, see [Specialized-guides › Large-deployments](#).

2.2.2. Proxy Requirements

One of SL Micro 6.1 or SUSE Linux Enterprise Server 15 SP7 is the operating system of the container host.



Minimum requirements are suitable for a quick test installation, such as a Proxy with one client. If you want to use a production environment start with recommended values.

Table 2. Proxy Hardware Requirements

Hardware	Details	Recommendation
CPU	x86-64, ARM	Minimum 2 dedicated 64-bit CPU cores
	Recommended	The same as minimum values
RAM	Minimum	2 GB
	Recommended	8 GB
Disk Space	/ (root directory)	Minimum 40 GB
	/var/lib/containers/storage/volumes	Minimum 100 GB
Swap space	Systems can benefit from additional swap space. SUSE recommends using a swap file instead of a swap partition. For more information about swap space, see installation-and-upgrade:hardware-requirements.pdf .	4 to 8 GB

By default the SUSE Multi-Linux Manager Proxy container caches packages in the `/var/lib/containers/storage/volumes/uyuni-proxy-squid-cache/` directory. If there is not enough space available, the proxy will remove old, unused packages and replace them with newer packages.

As a result of this behavior:

- The larger `/var/lib/containers/storage/volumes/uyuni-proxy-squid-cache/` directory is on the proxy, the less traffic will be between the proxy and the SUSE Multi-Linux Manager Server.
- By making the `/var/lib/containers/storage/volumes/uyuni-proxy-squid-cache/` directory on the proxy the same size as `/var/lib/containers/storage/volumes/var-spacewalk/` on the SUSE Multi-Linux Manager Server, you avoid a large amount of traffic after the first synchronization.
- The `/var/lib/containers/storage/volumes/uyuni-proxy-squid-cache/` directory can be small on the SUSE Multi-Linux Manager Server compared to the proxy. For a guide to size estimation, see the [Server Requirements](#) section.



In general, SUSE recommends to adjust the value for the cache directory to about 80 % of available free space. The `cache_dir` value is set when generating proxy configuration on the server. You cannot set the option directly in `squid.conf`.

2.2.3. Swap space

Workloads differ from system to system. Systems with heavy or unpredictable workloads can benefit from additional swap space, regardless of total RAM. It is recommended to place swap on the fastest available storage (for example, SSD). SUSE recommends using a swap file instead of a swap partition.

For size recommendations, see the tables above.

The following shell command snippet creates a 8GiB swap file.



A swap file on Btrfs filesystem prevent creating of a snapshot of that volume. `/var` in the following example is already excluded from the snapper snapshots, so it is safe to use `/var/swap`.

```
## setup swapfile at /var/swap
# run following as a root user

# allocate 8GiB for swap file
fallocate -l 8G /var/swap
# ensure CoW is disabled for the swap file
chattr +C /var/swap
# allow only root access
chmod 600 /var/swap
# make swap file based on allocated file
mkswap /var/swap
# activate swap use for the running system
swapon /var/swap
# activate swap during the next boots
echo "/var/swap swap swap defaults 0 0" >> /etc/fstab
```

2.2.4. Database Requirement

PostgreSQL is the only supported database. Using a remote PostgreSQL database or remote file systems (such

as NFS) with the PostgreSQL database is not supported. In other words, PostgreSQL should be on the fastest available storage device for SUSE Multi-Linux Manager.



Because of potential performance issues, running a PostgreSQL database remotely from SUSE Multi-Linux Manager is discouraged. While such an environment is possible and even stable in many cases, there is always a risk of data loss if something goes wrong.

SUSE might not be able to provide assistance in such cases.

2.2.5. Persistent Storage and Permissions

Persistent volumes are created by default when deploying the container.

However, it is recommended that the volumes are stored on one or more separate storage devices. Such a setup helps avoid data loss in production environments. This can be done after container deployment.

Storage devices best should be set up after first deploying the container. For more details, see **Installation-and-upgrade › Container-management**.

We recommend you use XFS as the filesystem type for all volumes. The size of the disk for repositories storage is dependent on the number of distributions and channels you intend to manage with SUSE Multi-Linux Manager. See the tables in this section for guides to estimate the size required.



Do not use NFS for Cobbler or PostgreSQL storage, neither NFS on SELinux environments. These scenarios are not supported.

On the SUSE Multi-Linux Manager Server, use this command to find all available storage devices:

```
hwinfo --disk | grep -E "Device File:"
```

Use the `lsblk` command to see the name and size of each device.

Use the `mgr-storage-server` command with the device names to set up the external disks as the locations for the storage and, optionally on a disk of its own, for the database:

```
mgr-storage-server <storage-disk-device> [<database-disk-device>]
```

For example:

```
mgr-storage-server /dev/nvme1n1 /dev/nvme2n1
```

The external storage volumes are set up as XFS partitions mounted at `/manager_storage` and `/pgsql_storage`.



This command will create the persistent storage volumes at `/var/lib/containers/storage/volumes`.

For more information, see **Installation-and-upgrade › Container-management**.

It is possible to use the same storage device for both channel data and the database. This is not recommended, as growing channel repositories might fill up the storage, which poses a risk to database integrity. Using separate storage devices may also increase performance. If you want to use a single storage device, run `mgr-storage-server` with a single device name parameter.

If you are installing a proxy, the `mgr-storage-proxy` command takes only one device name parameter and will set up the external storage location as the Squid cache.

2.2.6. Logical Volume Management (LVM)

For all kind of virtual machines (VM), LVM is generally not needed and not recommended. The disk setup is virtual and separate disks for volumes are possible and recommended.

For other deployments, separate disks for volumes are also recommended.

On the container host of the SUSE Multi-Linux Manager Server, the `mgr-storage-server` command moves the complete content of the `/var/lib/containers/storage/volumes` directory to a separate disk and remounts it to `/var/lib/containers/storage/volumes`.

Optionally, if a second device name is specified, `mgr-storage-server` moves the content of the `/var/lib/containers/storage/volumes/var-pgsql` database directory to a second separate disk and remounts it to `/var/lib/containers/storage/volumes/var-pgsql`.

Similarly, on the container host of the SUSE Multi-Linux Manager Proxy, the `mgr-storage-proxy` command moves the complete content of the `/var/lib/containers/storage/volumes` directory to a separate disk and remounts it to `/var/lib/containers/storage/volumes`.

2.3. Network Requirements

This section details the networking and port requirements for SUSE Multi-Linux Manager.



IP forwarding will be enabled by containerized installation. This means SUSE Multi-Linux Manager Server and Proxies will behave as a router. This behavior is done by podman directly. Podman containers do not run if IP forwarding is disabled.

Consider achieving network isolation of the SUSE Multi-Linux Manager environment according to your policies.

For more information, see <https://www.suse.com/support/kb/doc/?id=000020166>.

2.3.1. Fully Qualified Domain Name (FQDN)

The SUSE Multi-Linux Manager server must resolve its FQDN correctly. If the FQDN cannot be resolved, it can cause serious problems in a number of different components.

For more information about configuring the hostname and DNS, see <https://documentation.suse.com/sles/15-SP6/html/SLES-all/cha-network.html#sec-network-yast-change-host>.

2.3.2. Hostname and IP Address

To ensure that the SUSE Multi-Linux Manager domain name can be resolved by its clients, both server and client machines must be connected to a working DNS server. You also need to ensure that reverse lookups are correctly configured.

For more information about setting up a DNS server, see <https://documentation.suse.com/sles/15-SP6/html/SLES-all/cha-dns.html>.

2.3.3. Reenable router advertisements

When the SUSE Multi-Linux Manager is installed using `mgradm install podman` or `mgrpky install podman`, it sets up Podman which enables IPv4 and IPv6 forwarding. This is needed for communication from the outside of the container.

However, if your system previously had `/proc/sys/net/ipv6/conf/eth0/accept_ra` set to `1`, it will stop using router advertisements. As a result, the routes are no longer obtained via router advertisements and the default IPv6 route is missing.

To recover correct functioning of the IPv6 routing, follow the procedure:

Procedure: Reenabling router advertisements

1. Create a file in `/etc/sysctl.d`, for example `99-ipv6-ras.conf`.
2. Add the following parameter and value to the file:

```
net.ipv6.conf.eth0.accept_ra = 2
```

3. Reboot.

2.3.4. Deployment behind HTTP or HTTPS OSI level 7 proxy

Some environments enforce internet access through a HTTP or HTTPS proxy. This could be a Squid server or similar. To allow the SUSE Multi-Linux Manager Server internet access in such configuration, you need to configure the following.

Procedure: Configuring HTTP or HTTPS OSI level 7 proxy

1. For operating system internet access, modify `/etc/sysconfig/proxy` according to your needs:

```
PROXY_ENABLED="no"
HTTP_PROXY=""
HTTPS_PROXY=""
NO_PROXY="localhost, 127.0.0.1"
```

2. For Podman container internet access, modify `/etc/systemd/system/uyuni-server.service.d/custom.conf` according to your needs. For example, set:

```
[Service]
Environment=TZ=Europe/Berlin
Environment="PODMAN_EXTRA_ARGS="
Environment="https_proxy=user:password@http://192.168.10.1:3128"
```

3. For Java application internet access, modify `/etc/rhn/rhn.conf` according to your needs. On the container host, execute `mgrctl` term to open a command line inside the server container:

- a. Modify `/etc/rhn/rhn.conf` according to your needs. For example, set:

```
# Use proxy FQDN, or FQDN:port
server.satellite.http_proxy =
server.satellite.http_proxy_username =
server.satellite.http_proxy_password =
# no_proxy is a comma seperated list
server.satellite.no_proxy =
```

4. On the container host, restart the server to enforce the new configuration:

```
systemctl restart uyuni-server.service
```

2.3.5. Air-gapped Deployment

If you are on an internal network and do not have access to SUSE Customer Center, you can use an **Installation-and-upgrade › Container-deployment**.

In a production environment, the SUSE Multi-Linux Manager Server and clients should always use a firewall. For a comprehensive list of the required ports, see [installation-and-upgrade:network-requirements.pdf](#).

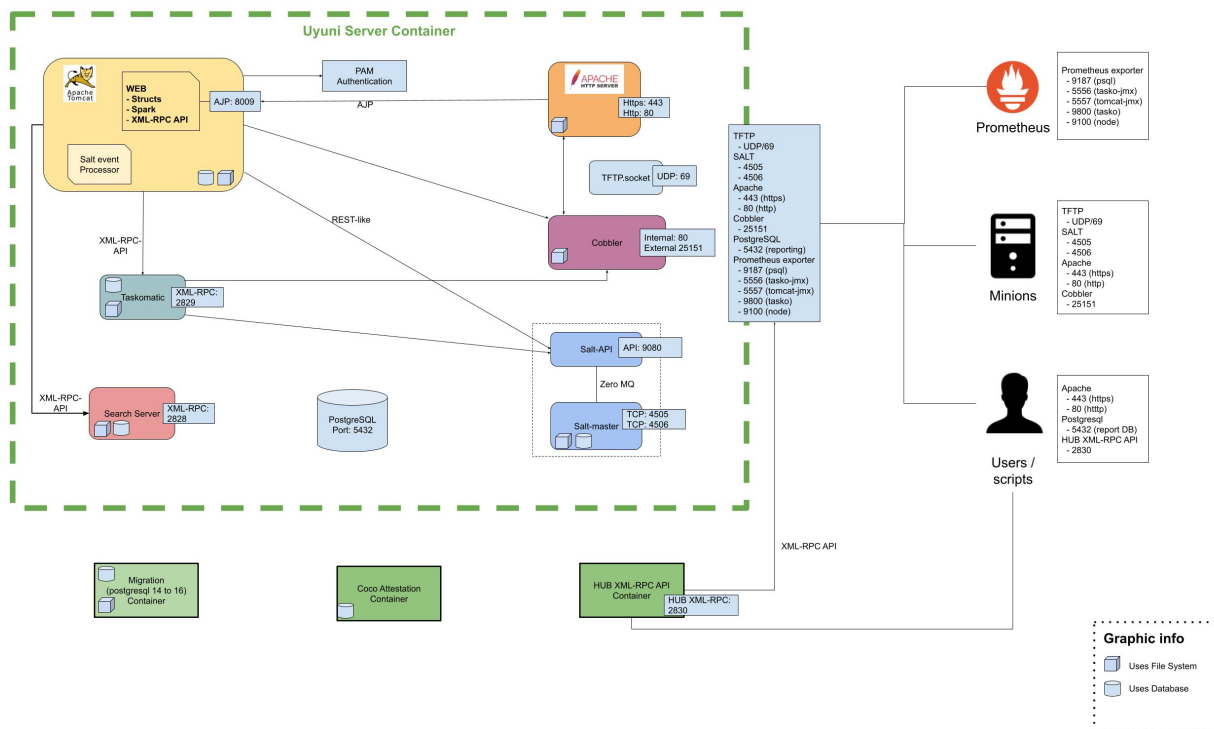
2.3.6. Required Network Ports

This section contains a comprehensive list of ports that are used for various communications within SUSE Multi-Linux Manager.

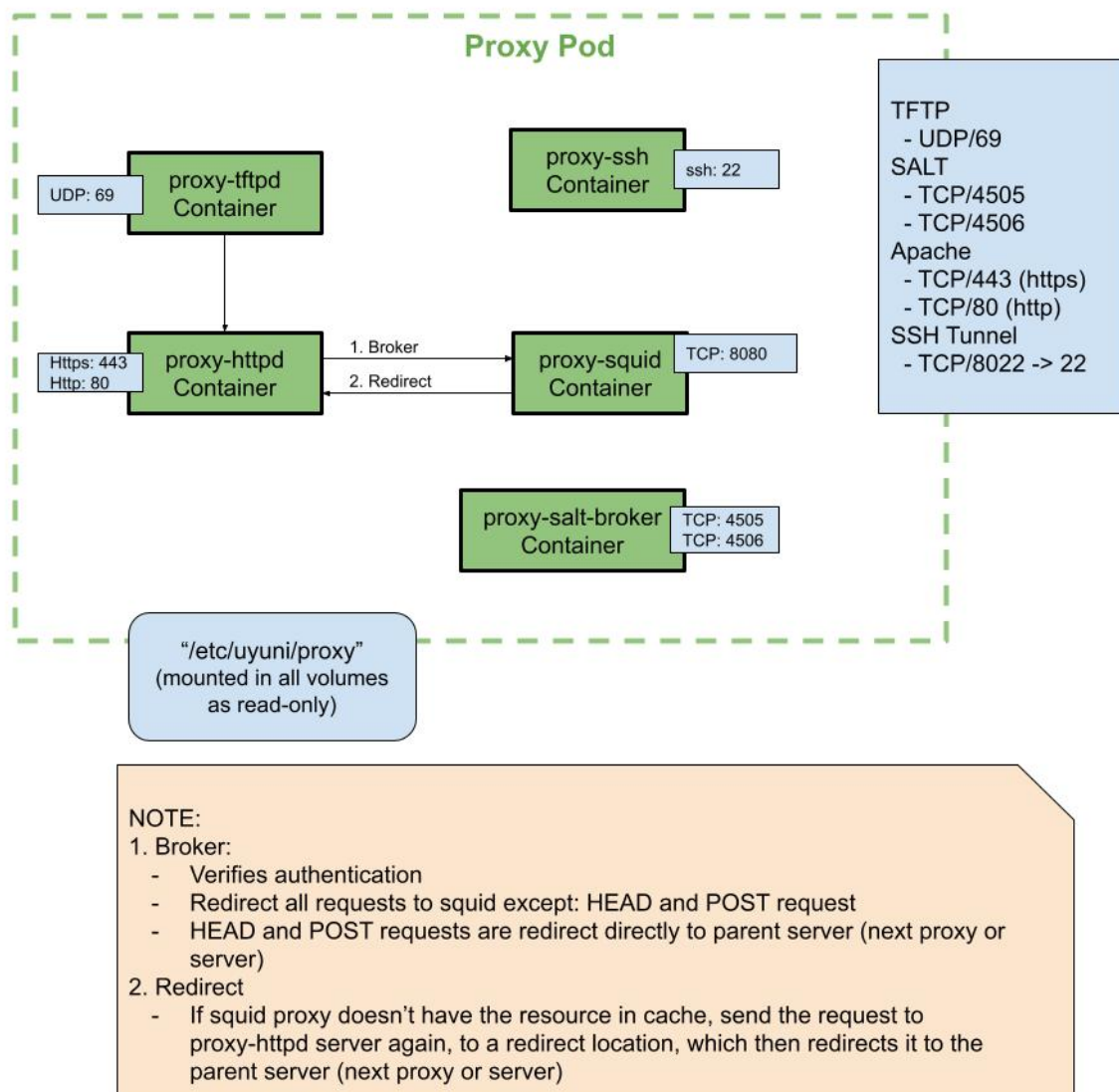
You will not need to open all of these ports. Some ports only need to be opened if you are using the service that requires them.

2.3.6.1. Overview

2.3.6.1.1. Server



2.3.6.1.2. Proxy



2.3.6.2. External Inbound Server Ports

External inbound ports must be opened to configure a firewall on the SUSE Multi-Linux Manager Server to protect the server from unauthorized access.

Opening these ports allows external network traffic to access the SUSE Multi-Linux Manager Server.

Table 3. External Port Requirements for SUSE Multi-Linux Manager Server

Port number	Protocol	Used By	Notes
67	TCP/UDP	DHCP	Required only if clients are requesting IP addresses from the server.

Port number	Protocol	Used By	Notes
69	TCP/UDP	TFTP	Required if server is used as a PXE server for automated client installation.
80	TCP	HTTP	Required temporarily for some bootstrap repositories and automated installations.
443	TCP	HTTPS	Serves the Web UI, client, and server and proxy (tftpsync) requests.
4505	TCP	salt	Required to accept communication requests from clients. The client initiates the connection, and it stays open to receive commands from the Salt master.
4506	TCP	salt	Required to accept communication requests from clients. The client initiates the connection, and it stays open to report results back to the Salt master.
5556	TCP	Prometheus	Required for scraping Taskomatic JMX metrics.
5557	TCP	Prometheus	Required for scraping Tomcat JMX metrics.
9100	TCP	Prometheus	Required for scraping Node exporter metrics.
9187	TCP	Prometheus	Required for scraping PostgreSQL metrics.
9800	TCP	Prometheus	Required for scraping Taskomatic metrics.
25151	TCP	Cobbler	

2.3.6.3. External Outbound Server Ports

External outbound ports must be opened to configure a firewall on the SUSE Multi-Linux Manager Server to restrict what the server can access.

Opening these ports allows network traffic from the SUSE Multi-Linux Manager Server to communicate with external services.

Table 4. External Port Requirements for SUSE Multi-Linux Manager Server

Port number	Protocol	Used By	Notes
80	TCP	HTTP	Required for SUSE Customer Center. Port 80 is not used to serve the Web UI.
443	TCP	HTTPS	Required for SUSE Customer Center.

Port number	Protocol	Used By	Notes
25151	TCP	Cobbler	

2.3.6.4. Internal Server Ports

Internal ports are used internally by the SUSE Multi-Linux Manager Server. Internal ports are only accessible from localhost.

In most cases, you will not need to adjust these ports.

Table 5. Internal Port Requirements for SUSE Multi-Linux Manager Server

Port number	Notes
2828	Satellite-search API, used by the RHN application in Tomcat and Taskomatic.
2829	Taskomatic API, used by the RHN application in Tomcat.
8005	Tomcat shutdown port.
8009	Tomcat to Apache HTTPD (AJP).
8080	Tomcat to Apache HTTPD (HTTP).
9080	Salt-API, used by the RHN application in Tomcat and Taskomatic.
25151	Cobbler's XMLRPC API
32000	Port for a TCP connection to the Java Virtual Machine (JVM) that runs Taskomatic and satellite-search.

Port 32768 and higher are used as ephemeral ports. These are most often used to receive TCP connections. When a TCP connection request is received, the sender will choose one of these ephemeral port numbers to match the destination port.

You can use this command to find out which ports are ephemeral ports:

```
cat /proc/sys/net/ipv4/ip_local_port_range
```

2.3.6.5. External Inbound Proxy Ports

External inbound ports must be opened to configure a firewall on the SUSE Multi-Linux Manager Proxy to protect the proxy from unauthorized access.

Opening these ports allows external network traffic to access the SUSE Multi-Linux Manager proxy.

Table 6. External Port Requirements for SUSE Multi-Linux Manager Proxy

Port number	Protocol	Used By	Notes
22			Only required if the user wants to manage the proxy host with Salt SSH.
67	TCP/UDP	DHCP	Required only if clients are requesting IP addresses from the server.
69	TCP/UDP	TFTP	Required if the server is used as a PXE server for automated client installation.
443	TCP	HTTPS	Web UI, client, and server and proxy (tftpsync) requests.
4505	TCP	salt	Required to accept communication requests from clients. The client initiates the connection, and it stays open to receive commands from the Salt master.
4506	TCP	salt	Required to accept communication requests from clients. The client initiates the connection, and it stays open to report results back to the Salt master.
8022			Required for ssh-push and ssh-push-tunnel contact methods. Clients connected to the proxy initiate check in on the server and hop through to clients.

2.3.6.6. External Outbound Proxy Ports

External outbound ports must be opened to configure a firewall on the SUSE Multi-Linux Manager Proxy to restrict what the proxy can access.

Opening these ports allows network traffic from the SUSE Multi-Linux Manager Proxy to communicate with external services.

Table 7. External Port Requirements for SUSE Multi-Linux Manager Proxy

Port number	Protocol	Used By	Notes
80			Used to reach the server.
443	TCP	HTTPS	Required for SUSE Customer Center.
4505	TCP	Salt	Required to connect to Salt master either directly or via proxy.

Port number	Protocol	Used By	Notes
4506	TCP	Salt	Required to connect to Salt master either directly or via proxy.

2.3.6.7. External Client Ports

External client ports must be opened to configure a firewall between the SUSE Multi-Linux Manager Server and its clients.

In most cases, you will not need to adjust these ports.

Table 8. External Port Requirements for SUSE Multi-Linux Manager Clients

Port number	Direction	Protocol	Notes
22	Inbound	SSH	Required for ssh-push and ssh-push-tunnel contact methods.
80	Outbound		Used to reach the server or proxy.
443	Outbound		Used to reach the server or proxy.
4505	Outbound	TCP	Required to connect to Salt master either directly or via proxy.
4506	Outbound	TCP	Required to connect to Salt master either directly or via proxy.
9090	Outbound	TCP	Required for Prometheus user interface.
9093	Outbound	TCP	Required for Prometheus alert manager.
9100	Outbound	TCP	Required for Prometheus node exporter.
9117	Outbound	TCP	Required for Prometheus Apache exporter.
9187	Outbound	TCP	Required for Prometheus PostgreSQL.

2.3.6.8. Required URLs

There are some URLs that SUSE Multi-Linux Manager must be able to access to register clients and perform updates. In most cases, allowing access to these URLs is sufficient:

- scc.suse.com
- updates.suse.com

- installer-updates.suse.com
- registry.suse.com
- registry-storage.suse.com

You can find additional details on whitelisting the specified URLs and their associated IP addresses in this article: [Accessing SUSE Customer Center and SUSE registry behind a firewall and/or through a proxy](#).

If you are using non-SUSE clients you might also need to allow access to other servers that provide specific packages for those operating systems. For example, if you have Ubuntu clients, you will need to be able to access the Ubuntu server.

For more information about troubleshooting firewall access for non-SUSE clients, see **Administration › Troubleshooting**.

2.4. Public Cloud Requirements

This section provides the requirements for installing SUSE Multi-Linux Manager on public cloud infrastructure. We have tested these instructions on Amazon EC2, Google Compute Engine, and Microsoft Azure, but they should work on other providers as well, with some variation.

Before you begin, here are some considerations:

- The SUSE Multi-Linux Manager setup procedure performs a forward-confirmed reverse DNS lookup. This must succeed in order for the setup procedure to complete and for SUSE Multi-Linux Manager to operate as expected. It is important to perform hostname and IP configuration before you set up SUSE Multi-Linux Manager.
- SUSE Multi-Linux Manager Server and Proxy instances need to run in a network configuration that provides you control over DNS entries, but cannot be accessed from the internet at large.
- Within this network configuration DNS resolution must be provided: `hostname -f` must return the fully qualified domain name (FQDN).
- DNS resolution is also important for connecting clients.
- DNS is dependent on the cloud framework you choose. Refer to the cloud provider documentation for detailed instructions.
- We recommend that you locate software repositories, the server database, and the proxy squid cache on an external virtual disk. This prevents data loss if the instance is unexpectedly terminated. This section includes instructions for setting up an external virtual disk.

2.4.1. Network Requirements

When you use SUSE Multi-Linux Manager on a public cloud, you must use a restricted network. We recommend using a VPC private subnet with an appropriate firewall setting. Only machines in your specified IP ranges must be able to access the instance.



Running SUSE Multi-Linux Manager on the public cloud means implementing robust security measures. It is essential to limit, filter, monitor, and audit access to the instance. SUSE strongly advises against a globally accessible SUSE Multi-Linux Manager instance that lacks adequate perimeter security.

To access the SUSE Multi-Linux Manager Web UI, allow HTTPS when configuring the network access controls. This allows you to access the SUSE Multi-Linux Manager Web UI.

In EC2 and Azure, create a new security group, and add inbound and outbound rules for HTTPS. In GCE, check the Allow HTTPS traffic box under the Firewall section.

2.4.2. Prepare Storage Volumes

We recommend that the repositories and the database for SUSE Multi-Linux Manager are stored on separate storage devices from the root volume. This will help to avoid data loss and possibly increase performance.

The SUSE Multi-Linux Manager container utilizes default storage locations. These locations should be configured prior to deployment for custom storage. For more information see **Installation-and-upgrade › Container-management**



Do not use logical volume management (LVM) for public cloud installations.

The size of the disk for repositories storage is dependent on the number of distributions and channels you intend to manage with SUSE Multi-Linux Manager. When you attach the virtual disks, they will appear in your instance as Unix device nodes. The names of the device nodes will vary depending on your provider, and the instance type selected.

Ensure the root volume of the SUSE Multi-Linux Manager Server is 100 GB or larger. Add an additional storage disk of 500 GB or more, and choose SSD storage if you can. The cloud images for SUSE Multi-Linux Manager Server use a script to assign this separate volume when your instance is launched.

When you launch your instance, you can log in to the SUSE Multi-Linux Manager Server and use this command to find all available storage devices:

```
hwinfo --disk | grep -E "Device File:"
```

If you are not sure which device to choose, use the `lsblk` command to see the name and size of each device.

Choose the name that matches with the size of the virtual disk you are looking for.

You can set up the external disk with the `mgr-storage-server` command. This creates an XFS partition mounted at `/manager_storage` and uses it as the location for the database and repositories:

```
/usr/bin/mgr-storage-server <devicename>
```

For more information about setting up storage volumes and partitions, including recommended minimum sizes, see **Installation-and-upgrade › Hardware-requirements**.

Chapter 3. Installation and Deployment

3.1. Install SUSE Multi-Linux Manager Server

There are various scenarios to deploy a SUSE Multi-Linux Manager Server.

3.1.1. SUSE Multi-Linux Manager 5.1 Server Deployment

This guide shows you how to install and configure a SUSE Multi-Linux Manager 5.1 container on SL Micro 6.1 or SUSE Linux Enterprise Server 15 SP7.

3.1.1.1. Hardware Requirements for SUSE Multi-Linux Manager

This table shows the software and hardware requirements for deploying SUSE Multi-Linux Manager Server on your bare metal machine. For the purposes of this guide your machine should have 16 GB of RAM, and at least 200 GB of disk space. For background information about disk space, see **Installation-and-upgrade › Hardware-requirements**.

Table 9. Software and Hardware Requirements

Software and Hardware	Recommended
Operating System	SL Micro 6.1 or SUSE Linux Enterprise Server 15 SP7
Architecture	x86-64, ARM, s390x, ppc64le
Processor (CPU)	Minimum of four (4) 64-bit CPU cores
RAM	16 GB
Disk Space	200 GB
Channel Requirements	50 GB per SUSE or openSUSE product 360 GB per Red Hat product
Swap space:	8 to 12 GB



Supported operating system for the Server Container Host

The supported operating system for the container host is SL Micro 6.1 or SUSE Linux Enterprise Server 15 SP7.

Container host

A container host is a server equipped with a container engine like Podman, which lets it manage and deploy containers. These containers hold applications and their essential parts, such as libraries, but not a full operating system, making them lightweight. This setup ensures applications run the same way in different environments. The container host supplies the necessary resources such as CPU, memory, and storage for these containers.

Server deployment mandates the use of a fully qualified domain name (FQDN). In the absence of automatic DNS provision of an FQDN by your router or network, the deployment process will not proceed successfully. An FQDN typically follows the format <host>.<domain>.com.

For instance:

- mlm.example.com
- mlm.container.lab

For more information, see the section on network requirements in **Installation-and-upgrade › Network-requirements**.

3.1.1.2. Persistent Volumes

SUSE Multi-Linux Manager 5.1 defines the required persistent storage volumes by default. These are created during installation by the `mgradm` tool if they do not already exist.

These volumes are created in `/var/lib/containers/storage/volumes/`, where Podman stores its volumes by default.

Recommendations

You can leverage the simplicity of storage by mounting an external storage device to this directory. Because it will store the PostgreSQL database, binary packages for repositories, caches, operating system images, autoinstallation distributions, and configuration files, we have three recommendations:

Fast Storage

This mount point should ideally be NVMe or SSD-class devices. Slower storage will adversely affect SUSE Multi-Linux Manager performance.

Large Capacity

Recommended minimum size for this is at least 300 GB, and larger if there will be multiple Linux distributions or architectures to manage.

Recommended Filesystem

XFS (though any supported filesystem for SL Micro 6.1 could work).

Optional

You can provide custom storage for the volumes by mounting disks on the expected volume path inside it such as `/var/lib/containers/storage/volumes/var-spacewalk`. This adds to the complexity of a SUSE Multi-Linux Manager deployment, and may affect the resilience the default storage recommendation provides.

For a list of all persistent volumes in the container, see **Installation-and-upgrade › Container-management**.

3.1.1.3. Prepare SUSE Multi-Linux Manager Server Host

You can deploy SUSE Multi-Linux Manager on SL Micro 6.1 or SUSE Linux Enterprise Server 15 SP7. SL Micro is a transactional system, while SUSE Linux Enterprise Server is a full server operating system.

Depending on your decision, either continue with [installation-and-upgrade:container-deployment/mlm/server-deployment-mlm.pdf](#) or with [installation-and-upgrade:container-deployment/mlm/server-deployment-mlm.pdf](#) and skip the not selected section.

3.1.1.3.1. Prepare SL Micro 6.1 Host

Download the installation media

Procedure: Downloading the Installation Media

1. Locate the SL Micro 6.1 installation media at <https://www.suse.com/download/sle-micro/>, and download the appropriate media file.
2. Prepare a DVD or USB flash drive with the downloaded .iso image for installation.

Install SL Micro 6.1

For more information about preparing your machines (virtual or physical), see the [SL Micro Deployment Guide](#).

Procedure: Installing SL Micro 6.1

1. Insert the DVD or USB flash drive (USB disk or key) containing the installation image for SLE Micro 6.1.
2. Boot or reboot your system.
3. Use the arrow keys to select Installation.
4. Adjust Keyboard and language.

5. Click the checkbox to accept the license agreement.
6. Click Next to continue.
7. Select the registration method. For this example, we will register the server with SUSE Customer Center.



The SUSE Multi-Linux Manager 5.1 containers are installed as extensions. Depending on the specific extension needed from the list below, additional SUSE Customer Center registration codes will be required for each.

- SUSE Multi-Linux Manager 5.1 Server
- SUSE Multi-Linux Manager 5.1 Proxy
- SUSE Multi-Linux Manager 5.1 Retail Branch Server



The SL Micro 6.1 entitlement is included within the SUSE Multi-Linux Manager entitlement, so it does not require a separate registration code.

8. Enter your SUSE Customer Center email address.
9. Enter your registration code for SL Micro 6.1.
10. Click Next to continue.
11. To install a proxy, select the SUSE Multi-Linux Manager 5.1 Proxy extension; to install a server, select the SUSE Multi-Linux Manager 5.1 Server extension Checkbox.
12. Click Next to continue.
13. Enter your SUSE Multi-Linux Manager 5.1 extension registration code.
14. Click **[Next]** to continue.
15. On the NTP Configuration page click **[Next]**.
16. On the Authentication for the System page enter a password for the root user. Click **[Next]**.
17. On the Installation Settings page click **[Install]**.

This concludes installation of SL Micro 6.1 and SUSE Multi-Linux Manager 5.1 as an extension.

OPTIONAL: Registration from the command line

If you added SUSE Multi-Linux Manager 5.1 as an extension during SL Micro 6.1 installation then you can skip this procedure. However, optionally you may skip registration during SL Micro 6.1 installation by selecting the **[Skip Registration]** button. This section provides steps on registering your products after SL Micro 6.1 installation.



The following steps register a SUSE Multi-Linux Manager 5.1 extension with the x86-64 architecture and thus require a registration code for the x86-64 architecture. To register

ARM or s390x architectures use the correct registration code.

Procedure: Registering from the Command Line

1. List available extensions with the following command:

```
transactional-update --quiet register --list-extensions
```

2. From the list of available extensions, select the one you wish to install:

- a. If installing the Server, use your SUSE Multi-Linux Manager Server Extension 5.1 x86_64 registration code with following command:

```
transactional-update register -p Multi-Linux-Manager-Server/5.1/x86_64 -r  
<reg_code>
```

- b. If installing the Proxy, use your SUSE Multi-Linux Manager Proxy Extension 5.1 x86_64 registration code with following command:

```
transactional-update register -p Multi-Linux-Manager-Proxy/5.1/x86_64 -r  
<reg_code>
```

3. Reboot.

Update the system

Procedure: Updating the System

1. Log in as **root**.
2. Run **transactional-update**:

```
transactional-update
```

3. Reboot.



SL Micro is designed to update itself automatically by default and will reboot after applying updates. However, this behavior is not desirable for the SUSE Multi-Linux Manager environment. To prevent automatic updates on your server, SUSE Multi-Linux Manager disables the transactional-update timer during the bootstrap process.

If you prefer the SL Micro default behavior, enable the timer by running the following command:

```
systemctl enable --now transactional-update.timer
```

To continue with deployment, see [installation-and-upgrade:container-deployment/mlm/server-deployment-mlm.pdf](#).

3.1.1.3.2. Prepare SUSE Linux Enterprise Server 15 SP7 Host

Alternatively, you can deploy SUSE Multi-Linux Manager on SUSE Linux Enterprise Server 15 SP7.

The following procedure describes the main steps of the installation process.

Procedure: Installing SUSE Multi-Linux Manager Extensions on SUSE Linux Enterprise Server 15 SP7

1. Locate and download SUSE Linux Enterprise Server 15 SP7 .iso at <https://www.suse.com/download/sles/>.
2. Make sure that you have registration codes both for the host operating system (SUSE Linux Enterprise Server 15 SP7) and extensions
3. Start the installation of SUSE Linux Enterprise Server 15 SP7.
 - a. On the Language, keyboard and product selection select the product to install.
 - b. On the License agreement read the agreement and check I Agree to the License Terms.
4. Select the registration method. For this example, we will register the server with SUSE Customer Center.
5. Enter your SUSE Customer Center email address.
6. Enter your registration code for SUSE Linux Enterprise Server 15 SP7.
7. Click **Next** to continue.



Please note that for SUSE Linux Enterprise Server 15 SP7, you are required to have a valid SUSE Linux Enterprise Server subscription and corresponding registration code, which you must provide on this screen. You will be required to enter the SUSE Multi-Linux Manager Extension registration code below.

8. In the screen Extensions and Modules Selection check the following:
 - Select the SUSE Multi-Linux Manager Server Extension to install the Server, or the SUSE Multi-Linux Manager Proxy Extension to install the Proxy.
 - Basesystem Module
 - Containers Module
9. Click **Next** to continue.
10. Enter your SUSE Multi-Linux Manager 5.1 extension registration code.

11. Click **[Next]** to continue.
12. Complete the installation.
13. When the installation completes, log in to the newly installed server as root.
14. Update the System (optional, if the system was not set to download updates during install):

```
zypper up
```

15. Reboot.
16. Log in as root and install podman plus mgradm and mgradm-bash-completion (if not already automatically installed):

```
zypper install podman mgradm mgradm-bash-completion
```

17. Start the Podman service by rebooting the system, or running a command:

```
systemctl enable --now podman.service
```

To continue with deployment, see [installation-and-upgrade:container-deployment/mlm/server-deployment-mlm.pdf](#).

3.1.1.4. Configure Custom Persistent Storage

Configuring persistent storage is optional, but it is the only way to avoid serious trouble with container full disk conditions. It is highly recommended to configure custom persistent storage with the mgr-storage-server tool.

- For more information, see `mgr-storage-server --help`. This tool simplifies creating the container storage and database volumes.

Use the command in the following manner:

```
mgr-storage-server <storage-disk-device> [<database-disk-device>]
```

For example:

```
mgr-storage-server /dev/nvme1n1 /dev/nvme2n1
```



This command will create the persistent storage volumes at `/var/lib/containers/storage/volumes`.

For more information, see

- **Installation-and-upgrade › Container-management**
- **Administration › Troubleshooting**

3.1.1.5. Deploy SUSE Multi-Linux Manager with mgradm



If you want to use third-party SSL certificates instead of the self-signed certificates, import them in the run of the following deployment procedure.

For more information about the requirements of third-party SSL certificates, see **Administration › Ssl-certs-imported**.

Procedure: Deploying SUSE Multi-Linux Manager 5.1 Using mgradm

1. Log in as root.
2. Execute one of the following commands, depending on the SSL certificate variant (self-signed or third-party). Replace <FQDN> with your fully qualified domain name of the SUSE Multi-Linux Manager Server:

- Using self-signed certificates provided by SUSE Multi-Linux Manager:

```
mgradm install podman <FQDN>
```

- With importing SSL certificates using third-party SSL certificate flags (the example can adjusted if not all these certificates are needed):

```
mgradm install podman <FQDN> \
--ssl-ca-intermediate <strings> \
--ssl-ca-root <string> \
--ssl-server-cert <string> \
--ssl-server-key <string> \
--ssl-db-ca-intermediate <strings> \
--ssl-db-ca-root <string> \
--ssl-db-cert <string> \
--ssl-db-key <string>
```

For more information, see `mgradm install podman --help`.



If the executed command fails ensure that you have registered SUSE Multi-Linux Manager 5.1. If you skipped registration during installation and now need to register from the command line, follow the steps below to log in to the registry:

```
podman login -u <EMAIL> -p <REGISTRATION-CODE> registry.suse.com
```

Use the SUSE Multi-Linux Manager 5.1 registration key when prompted.

3. Enter CA key (certificate authority) and administrator account password when prompted.



The administrator account password must be at least 5 characters and less than 48 characters in length.

4. Press **[Enter]**.
5. Enter the email address of the administration account. Press **[Enter]**.
6. Wait for deployment to complete.
7. Open a browser and proceed to your servers FQDN.
8. Enter your username (default is admin) and the password you set during the deployment process.

In this guide you deployed SUSE Multi-Linux Manager 5.1 Server as a container. Proceed to the next section to add your organization credentials for syncing with SUSE Customer Center.

3.1.1.6. Connect SUSE Multi-Linux Manager 5.1 to SUSE Customer Center

This section covers synchronizing with SCC from the Web UI and adding your first client channel.

Procedure: Entering Organization Credentials

1. Open a browser and proceed to your servers FQDN.
2. Enter your username (default is admin) and the password you set during the deployment process.
3. In the SUSE Multi-Linux Manager Web UI, select **Admin › Setup Wizard**.
4. From the Setup Wizard page select the **[Organization Credentials]** tab.
5. Click **[Add a new credential]**.
6. Point your browser to the SUSE Customer Center.
7. Select your organization from the left navigation.
8. Select the users tab from the top of the page then **[Organization Credentials]**.
9. Make a note of your **Mirroring credentials**.
10. Back in the SUSE Multi-Linux Manager Web UI enter your Username and Password, and confirm with **[Save]**.

When the credentials are confirmed with a green check-mark icon, proceed with [Procedure: Synchronizing with SUSE Customer Center](#).

Procedure: Synchronizing with SUSE Customer Center

1. In the Web UI, navigate to **Admin › Setup Wizard**.
2. From the Setup Wizard page select the SUSE Products tab. If you recently registered with SUSE Customer Center a list of products will begin populating the table. This operation could take up to a few minutes. You can monitor the progress of the operation in section on the right Refresh the product catalog from SUSE Customer Center. The table of products lists architecture, channels, and status information. For more information, see **Reference › Admin**.

Setup Wizard

HTTP Proxy Organization Credentials **SUSE Products**

Clear + Add products

Filter by product Description Filter by architecture 25 items per page

Items 1 - 25 of 94

Product Description	Arch	Channels
<input type="checkbox"/> Open Enterprise Server 2018	x86_64	
<input type="checkbox"/> RHEL Expanded Support 5	i386	
<input type="checkbox"/> RHEL Expanded Support 5	x86_64	
<input type="checkbox"/> > RHEL Expanded Support 6	i386	
<input type="checkbox"/> > RHEL Expanded Support 6	x86_64	
<input type="checkbox"/> > RHEL Expanded Support 7	x86_64	
<input type="checkbox"/> SUSE Container as a Service Platform 1.0	x86_64	
<input type="checkbox"/> SUSE Container as a Service Platform 2.0	x86_64	
<input type="checkbox"/> > SUSE Linux Enterprise Desktop 11 SP2	i586	
<input type="checkbox"/> > SUSE Linux Enterprise Desktop 11 SP2	x86_64	
<input type="checkbox"/> > SUSE Linux Enterprise Desktop 11 SP3	i586	
<input type="checkbox"/> > SUSE Linux Enterprise Desktop 11 SP3	x86_64	
<input type="checkbox"/> > SUSE Linux Enterprise Desktop 11 SP4	i586	
<input type="checkbox"/> > SUSE Linux Enterprise Desktop 11 SP4	x86_64	
<input type="checkbox"/> > SUSE Linux Enterprise Desktop 12	x86_64	
<input type="checkbox"/> > SUSE Linux Enterprise Desktop 12 SP1	x86_64	
<input type="checkbox"/> > SUSE Linux Enterprise Desktop 12 SP2	x86_64	
<input type="checkbox"/> > SUSE Linux Enterprise Desktop 12 SP3	x86_64	
<input checked="" type="checkbox"/> > SUSE Linux Enterprise Desktop 15	x86_64	100%
<input type="checkbox"/> > SUSE Linux Enterprise High Performance Computing 15	aarch64	include recommended
<input type="checkbox"/> > SUSE Linux Enterprise High Performance Computing 15	x86_64	include recommended
<input type="checkbox"/> > SUSE Linux Enterprise Server 10 SP3	i586	
<input type="checkbox"/> > SUSE Linux Enterprise Server 10 SP3	ia64	
<input type="checkbox"/> > SUSE Linux Enterprise Server 10 SP3	ppc	
<input type="checkbox"/> > SUSE Linux Enterprise Server 10 SP3	s390x	

Page 1 of 4 First Prev Next Last

← Prev 3 of 3

Refresh the product catalog from SUSE Customer Center

- ☐ Channels
- ☐ Channel Families
- ☐ Products
- ☐ Product Channels
- ☐ Subscriptions

Refresh

Why aren't all SUSE products displayed in the list?

The products displayed on this list are directly linked to your Organization credentials (Mirror credentials) as well as your SUSE subscriptions.

If you believe there are products missing, make sure you have added the correct Organization credentials in the previous wizard step.

3. Use the **Filter by product description** and **Filter by architecture** to filter the list of displayed products. The channels listed on the **[Products]** page provide repositories for clients.
 - Add channels to SUSE Multi-Linux Manager by selecting the check box to the left of each channel. Click the arrow symbol to the left of the description to unfold a product and list available modules.
 - Click **[Add Products]** at the top of the page to start product synchronization.

After adding the channel, SUSE Multi-Linux Manager will schedule the channel to be synchronized. This can take a long time as SUSE Multi-Linux Manager will copy channel software sources from the SUSE repositories located at SUSE Customer Center to the local `/var/lib/containers/storage/volumes/var-spacewalk/` directory of your server.

When the channel is fully synchronized, a bootstrap repository for it will be automatically generated. This step is crucial for successfully bootstrapping clients, ensuring that the channel synchronization and distribution are operational on the client side. This completes the installation and configuration of SUSE Multi-Linux Manager, along with preparing the channels necessary for bootstrapping clients.

When the channel synchronization process is complete, you can proceed with registering the SUSE Multi-Linux Manager 5.1 Proxy or additional clients.

For more instructions, see **Client-configuration › Registration-overview**.

3.1.1.7. Entering the Container for Management

To get to a shell inside the container, run on the container host:

```
mgrctl term
```

3.1.2. SUSE Multi-Linux Manager 5.1 Server Deployment as a Virtual Machine - KVM

This chapter provides the required Virtual Machine settings for deployment of SUSE Multi-Linux Manager 5.1 as an image. KVM will be combined with Virtual Machine Manager (virt-manager) as a sandbox for this installation.

3.1.2.1. Available Images



- The preferred method for deploying SUSE Multi-Linux Manager 5.1 Server is to use one of the following available images. All tools are included in these images greatly simplifying deployment.

Images for SUSE Multi-Linux Manager 5.1 are available at [SUSE Multi-Linux Manager 5.1 VM images](#).



Customized SUSE Multi-Linux Manager 5.1 VM images are provided only for SL Micro 6.1. To run the product on SUSE Linux Enterprise Server 15 SP7, use the standard SUSE Linux Enterprise Server 15 SP7 installation media available at <https://www.suse.com/download/sles/> and enable the SUSE Multi-Linux Manager 5.1 extensions on top of it.

Table 10. Available Server Images

Architecture	Image Format
aarch64	qcow2, vmdk
x86_64	qcow2, vmdk, raw, Self Installer
ppc64le	raw, Self Installer
s390x *	qcow2, raw

* Two storage options are available for s390x: CDL DASD and FBA.

3.1.2.2. Virtual Machine Manager (virt-manager) Settings

Enter the following settings when creating a new virtual machine using **virt-manager**.



This table specifies the minimum requirements. These are suitable for a quick test installation, such as a server with one client. If you want to use a production environment and need background information about disk space, see **Installation-and-upgrade › Hardware-requirements**.

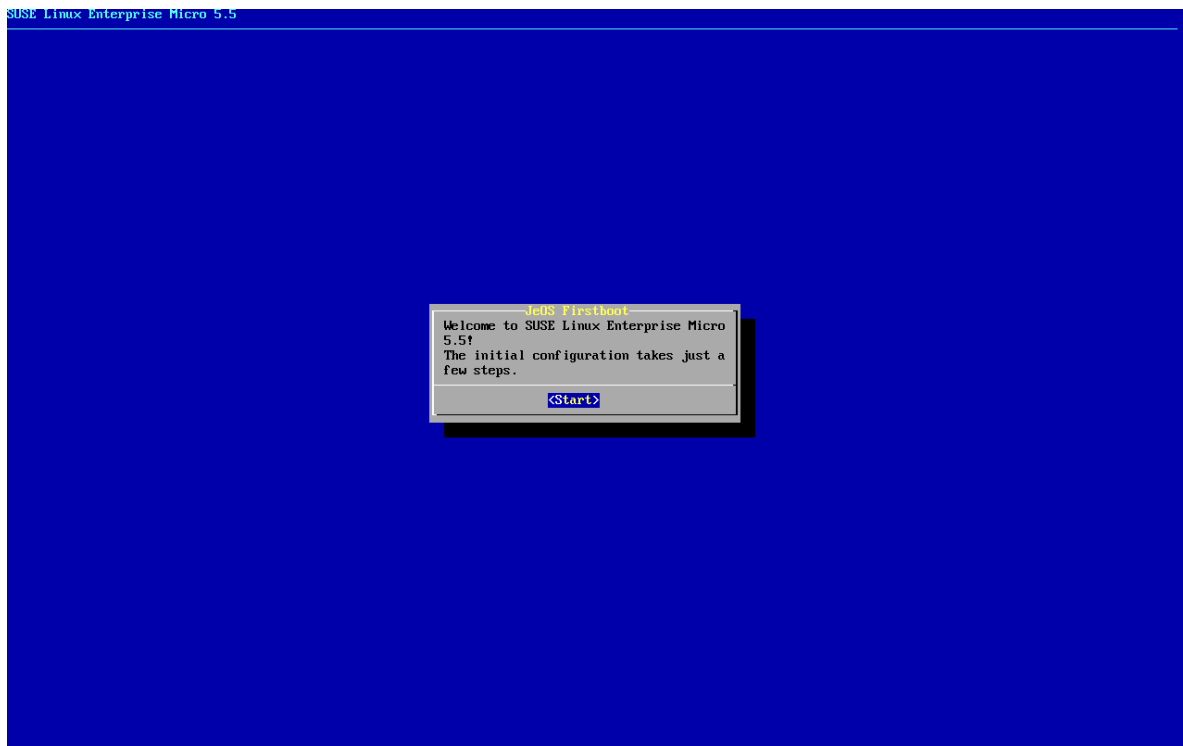
KVM Settings	
Installation Method	Import Existing Disk Image
OS:	Linux
Version:	SUSE Multi-Linux Manager-Server.x86_64-5.1.*.qcow2
Memory:	Minimum *)
CPU's:	Minimum *)
Storage Format:	.qcow2 40 GB (Default) Root Partition
Name:	test-setup
Network	Bridge br0

*) For minimum values, see [installation-and-upgrade:hardware-requirements.pdf](#).

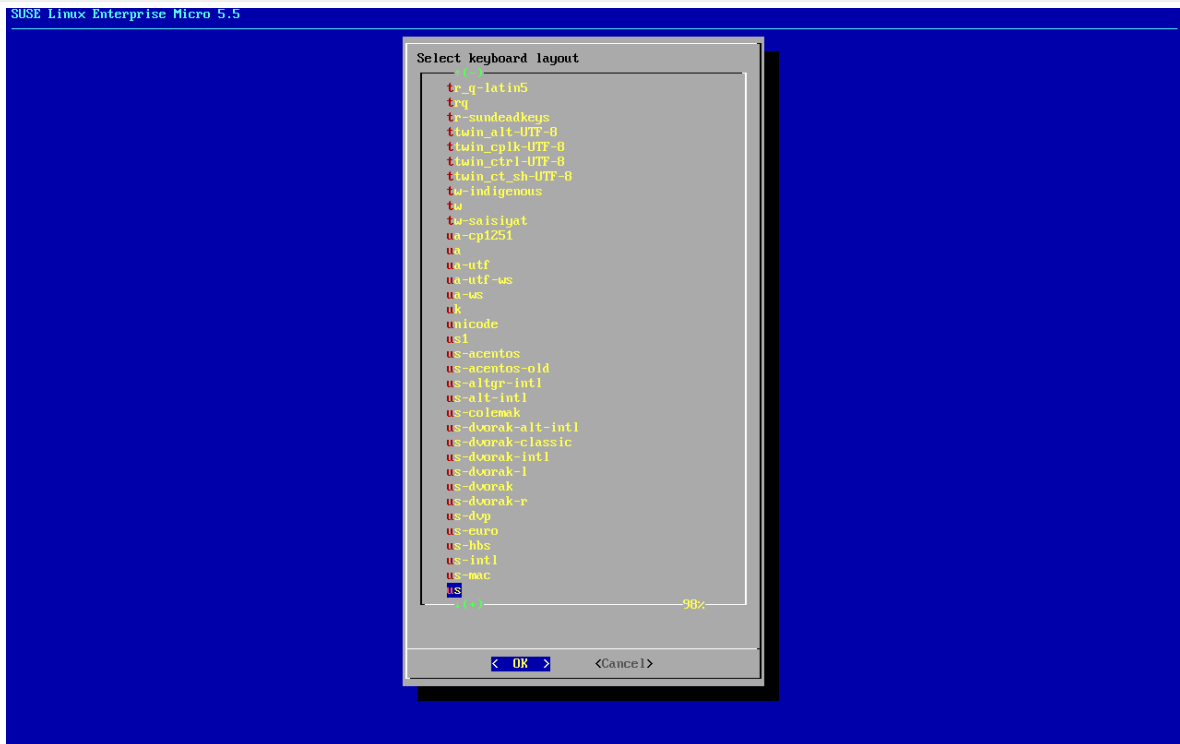
3.1.2.3. Initial KVM Setup

Procedure: Creating Initial Setup

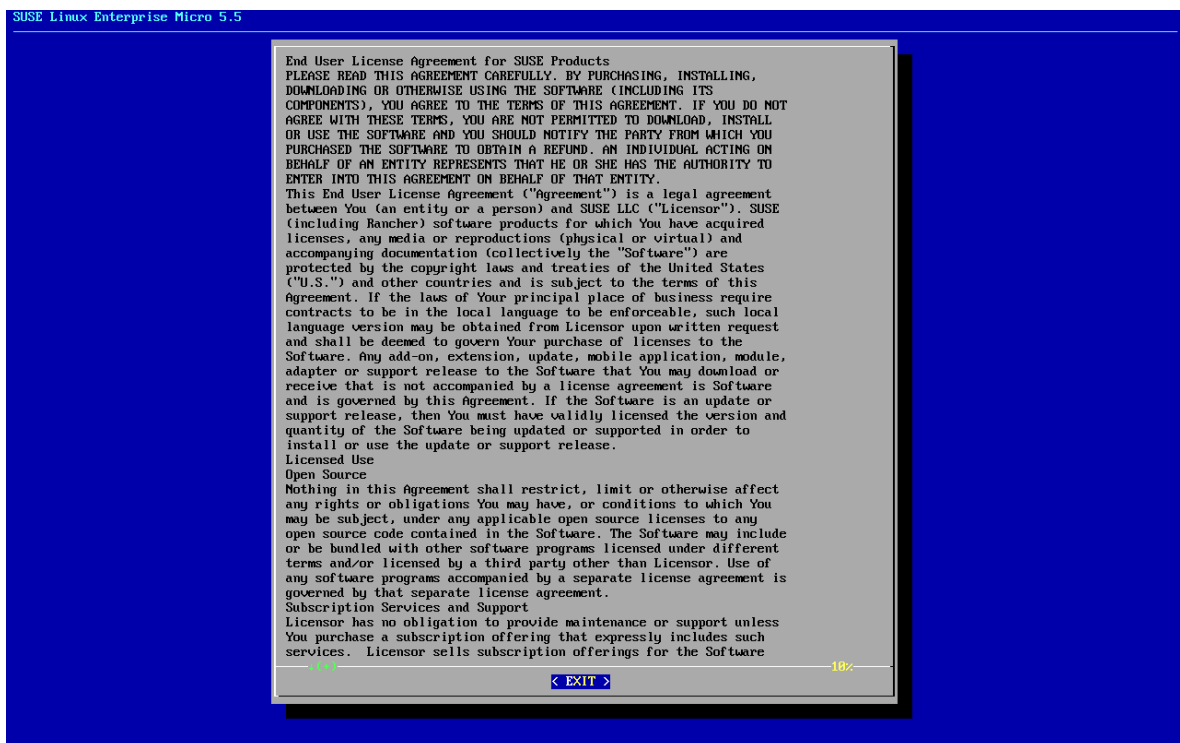
1. Create a new virtual machine using the downloaded Minimal KVM image and select Import existing disk image.
2. Configure RAM and number of CPUs.
3. Name your KVM machine.
4. Click **[Begin Installation]** to boot from the image.
5. At the JeOS Firstboot screen select start to continue.



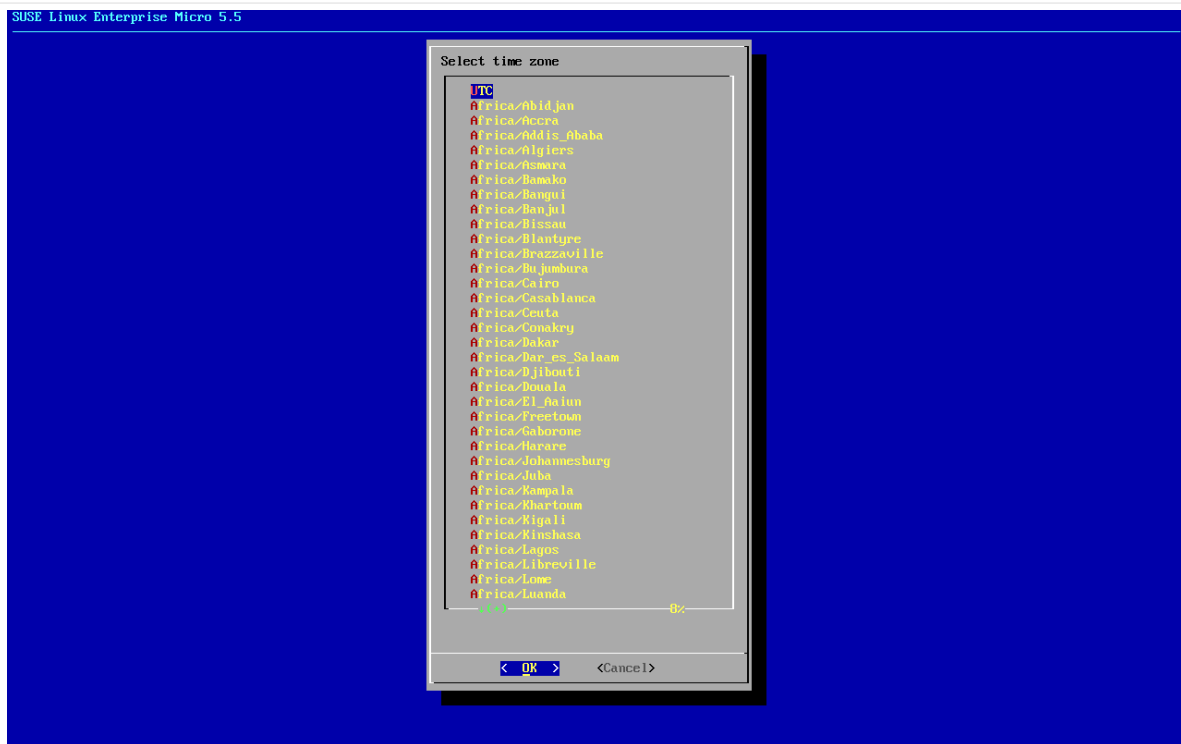
6. Select keyboard layout.



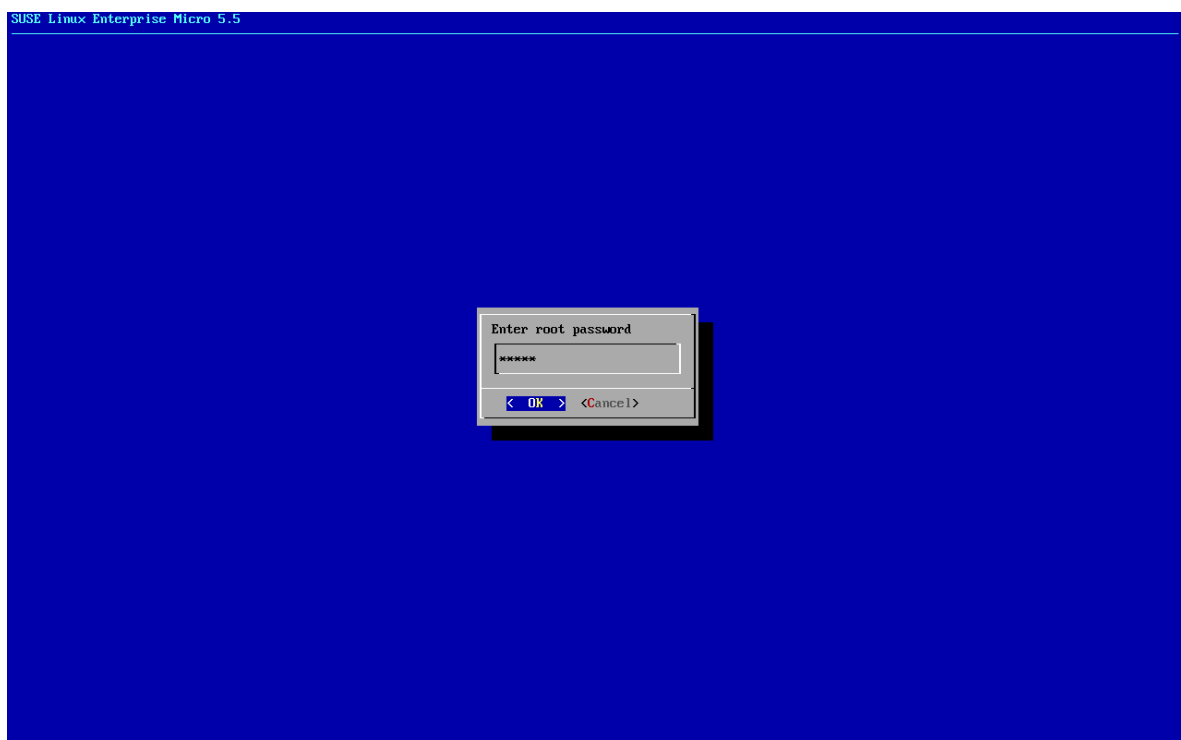
7. Accept the license agreement.



8. Select your time zone.



9. Enter a password for root.



10. When installation completes log in as root.
11. Proceed to the next section.

3.1.2.4. Register SL Micro and SUSE Multi-Linux Manager 5.1 Server



The SL Micro 6.1 entitlement is included within the SUSE Multi-Linux Manager entitlement, so it does not require a separate registration code.

Procedure: Registering SL Micro and SUSE Multi-Linux Manager 5.1

1. Boot the virtual machine.
2. Log in as root.
3. Register SL Micro with SCC.

```
transactional-update register -r <REGCODE> -e <your_email>
```

4. Reboot.
5. Register SUSE Multi-Linux Manager 5.1 with SUSE Customer Center.

```
transactional-update register -p Multi-Linux-Manager-Server/5.1/x86_64 -r <REGCODE>
```

6. Reboot.
7. Update the system:

```
transactional-update
```

8. If updates were applied reboot.
9. This step is optional. However, if custom persistent storage is required for your infrastructure, use the `mgr-storage-server` tool.
 - For more information, see `mgr-storage-server --help`. This tool simplifies creating the container storage and database volumes.
 - Use the command in the following manner:

```
mgr-storage-server <storage-disk-device> [<database-disk-device>]
```

For example:

```
mgr-storage-server /dev/nvme1n1 /dev/nvme2n1
```



This command will move the persistent storage volumes at `/var/lib/containers/storage/volumes` to specified storage devices.

For more information, see

- **Installation-and-upgrade › Container-management**
- **Administration › Troubleshooting**

10. Execute one of the following commands, depending on the SSL certificate variant (self-signed or third-party). Replace <FQDN> with your fully qualified domain name of the SUSE Multi-Linux Manager Server:

- Using self-signed certificates provided by SUSE Multi-Linux Manager:

```
mgradm install podman <FQDN>
```

- With importing SSL certificates using third-party SSL certificate flags (the example can adjusted if not all these certificates are needed):

```
mgradm install podman <FQDN> \
--ssl-ca-intermediate <strings> \
--ssl-ca-root <string> \
--ssl-server-cert <string> \
--ssl-server-key <string> \
--ssl-db-ca-intermediate <strings> \
--ssl-db-ca-root <string> \
--ssl-db-cert <string> \
--ssl-db-key <string>
```

For more information, see `mgradm install podman --help`.

3.1.3. SUSE Multi-Linux Manager 5.1 Server Deployment as a Virtual Machine - VMware

This chapter provides the required Virtual Machine settings for deployment of SUSE Multi-Linux Manager 5.1 as an Image. VMware will be used as a sandbox for this installation.

3.1.3.1. Available Images



The preferred method for deploying SUSE Multi-Linux Manager 5.1 Server is to use one of the following available images. All tools are included in these images greatly simplifying deployment.

Images for SUSE Multi-Linux Manager 5.1 are available at [SUSE Multi-Linux Manager 5.1 VM images](#).



Customized SUSE Multi-Linux Manager 5.1 VM images are provided only for SL Micro 6.1. To run the product on SUSE Linux Enterprise Server 15 SP7, use the standard SUSE Linux Enterprise Server 15 SP7 installation media available at <https://www.suse.com/>

[download/sles/](#) and enable the SUSE Multi-Linux Manager 5.1 extensions on top of it.



For more information on preparing raw images, see <https://documentation.suse.com/sle-micro/6.1/html/Micro-deployment-raw-images-virtual-machines/index.html#deployment-preparing-configuration-device>.

For additional information on the self install images, see <https://documentation.suse.com/sle-micro/6.1/html/Micro-deployment-selfinstall-images/index.html>

Table 11. Available Server Images

Architecture	Image Format
aarch64	qcow2, vmdk
x86_64	qcow2, vmdk, raw, Self Installer
ppc64le	raw, Self Installer
s390x *	qcow2, raw

* Two storage options are available for s390x: CDL DASD and FBA.

3.1.3.2. SUSE Multi-Linux Manager Virtual Machine Settings - VMware

This sections describes VMware configurations, focusing on the creation of an extra virtual disk essential for the SUSE Multi-Linux Manager storage partition within VMware environments.

Procedure: Creating the VMware Virtual Machine

1. Download SUSE Multi-Linux Manager Server .vmdk file then transfer a copy to your VMware storage.
2. Make a copy of uploaded .vmdk file using VMware web interface. This will convert provided .vmdk file to the format suitable for vSphere hypervisor.
3. Create and name a new virtual machine based on the Guest OS Family Linux and Guest OS Version SUSE Linux Enterprise 15 (64-bit).

+

1. Add an additional Hard Disk 2 of 500 GB (or more).
2. Configure RAM and number of CPUs with minimum values. *)
3. Set the network adapter as required.

4. Power on the VM, and follow firstboot dialogs (keyboard layout, license agreement, time zone, password for root).
5. When installation completes log in as root.
6. Proceed to the next section.

*) For minimum values, see [installation-and-upgrade:hardware-requirements.pdf](#).

3.1.3.3. Register SL Micro and SUSE Multi-Linux Manager 5.1 Server

Before starting obtain your SUSE Multi-Linux Manager Registration Code from SUSE Customer Center - <https://scc.suse.com>.



The SL Micro 6.1 entitlement is included within the SUSE Multi-Linux Manager entitlement, so it does not require a separate registration code.

Procedure: Registering SL Micro and SUSE Multi-Linux Manager 5.1

1. Boot the virtual machine.
2. Log in as root.
3. Register SL Micro with SCC.

```
transactional-update register -r <REGCODE> -e <your_email>
```

4. Reboot.
5. Register SUSE Multi-Linux Manager 5.1 with SUSE Customer Center.

```
transactional-update register -p Multi-Linux-Manager-Server/5.1/x86_64 -r <REGCODE>
```

6. Reboot
7. Update the system:

```
transactional-update
```

8. If updates were applied reboot.
9. This step is optional. However, if custom persistent storage is required for your infrastructure, use the `mgr-storage-server` tool.
 - For more information, see `mgr-storage-server --help`. This tool simplifies creating the container storage and database volumes.

- Use the command in the following manner:

```
mgr-storage-server <storage-disk-device> [<database-disk-device>]
```

For example:

```
mgr-storage-server /dev/nvme1n1 /dev/nvme2n1
```



This command will create the persistent storage volumes at /var/lib/containers/storage/volumes.

For more information, see

- **Installation-and-upgrade › Container-management**
- **Administration › Troubleshooting**

- Execute one of the following commands, depending on the SSL certificate variant (self-signed or third-party). Replace <FQDN> with your fully qualified domain name of the SUSE Multi-Linux Manager Server:

- Using self-signed certificates provided by SUSE Multi-Linux Manager:

```
mgradm install podman <FQDN>
```

- With importing SSL certificates using third-party SSL certificate flags (the example can adjusted if not all these certificates are needed):

```
mgradm install podman <FQDN> \
--ssl-ca-intermediate <strings> \
--ssl-ca-root <string> \
--ssl-server-cert <string> \
--ssl-server-key <string> \
--ssl-db-ca-intermediate <strings> \
--ssl-db-ca-root <string> \
--ssl-db-cert <string> \
--ssl-db-key <string>
```

For more information, see `mgradm install podman --help`.

3.1.4. SUSE Multi-Linux Manager Server Air-gapped Deployment

3.1.4.1. What is Air-gapped Deployment?

Air-gapped deployment refers to the setup and operation of any networked system that is physically isolated from insecure networks, especially the internet. This type of deployment is commonly used in high-security

environments such as military installations, financial systems, critical infrastructure, and anywhere sensitive data is handled and must be protected from external threats.

3.1.4.2. Deployments

SUSE Multi-Linux Manager supports two deployment variants.

3.1.4.2.1. Deploy with Virtual Machine

The recommended installation method is using the provided SUSE Multi-Linux Manager Virtual Machine Image option, since all the needed tools and container images are pre-loaded and will work out of the box.

For more information about installing SUSE Multi-Linux Manager Server Virtual Machine, see [Deploy Server as a Virtual Machine](#).

To upgrade SUSE Multi-Linux Manager Server, users should upgrade all packages in the system and follow the procedures defined in [Server Upgrade](#).

3.1.4.2.2. Deploy SUSE Multi-Linux Manager on SL Micro

SUSE Multi-Linux Manager also provides all the needed container images in RPM's that can be installed on the system.



User should make the needed RPM available on the internal network. That can be done by using a second SUSE Multi-Linux Manager Server or an RMT server.

Procedure: Install SUSE Multi-Linux Manager on SL Micro in Air-gapped

1. Install SL Micro
2. Update the system
3. Install tools packages and image packages (replace \$ARCH\$ with the correct architecture)

```
transactional-update pkg install mgradm* mgrctl* multi-linux-manager-5.1-$ARCH$-server-*
```

4. Reboot.
5. Deploy SUSE Multi-Linux Manager with mgradm.

For more detailed information about installing SUSE Multi-Linux Manager Server on SL Micro, see [Deploy Server as a Virtual Machine](#).

To upgrade SUSE Multi-Linux Manager Server, users should upgrade all packages in the system and follow the

procedures defined in [Server Upgrade](#).

3.1.4.3. PTFs

The PTF images are not available as packages. This means that they should be pulled using podman on a machine with internet access, then saved in an archive, transferred to the air-gapped machine and loaded there.

Procedure: Pulling the image on a machine with internet access

1. Install podman.
2. Authenticate against the SUSE Registry using the SCC credentials:

```
set +o history
echo SCC_MIRRORING_PASSWORD | podman login -u "SCC_MIRRORING_USER" --password-stdin
registry.suse.com
set -o history
```

3. Create a /tmp/ptf-images temporary file with the URL of the PTF images, one per line. In most of the cases only the server image is needed and it can be created with a command like the following, after replacing the SCC_USERID and PTFID values.

```
SCC_USERID=aXXXX
PTFID=12345
echo "registry.suse.com/a/$SCC_USERID/$PTFID/suse/multi-linux-
manager/5.1/x86_64/server:latest-ptf-$PTFID" >>/tmp/ptf-images
```

4. Pull each of the container images of the PTF and save them in a tar archive.

```
for image in `cat /tmp/ptf-images`; do
    podman pull $image
done
podman save -o /tmp/ptf-images.tar `cat /tmp/ptf-images`
```

5. Transfer the /tmp/ptf-images.tar images archive on the server to patch.

Procedure: Loading the images on the server to patch

1. Ensure the ptf-images.tar file is available on the server.
2. Load the images from the archive:

```
podman load -i ptf-images.tar
```

3. Install the PTF using mgradm support ptf podman as would be done on a connected machine. Because the images are already loaded they will not be pulled.

3.1.5. Public Cloud Deployment

Public clouds provide SUSE Multi-Linux Manager under a Bring-your-own-subscription (BYOS) or Pay-as-you-go (PAYG) models.

For more information about using SUSE Multi-Linux Manager in the public cloud, see **Specialized-guides › Public-cloud-guide**.

3.2. Install SUSE Multi-Linux Manager Proxy

There are various scenarios to deploy a SUSE Multi-Linux Manager Proxy. All these scenarios presume you have already successfully deployed a SUSE Multi-Linux Manager 5.1 Server.

3.2.1. SUSE Multi-Linux Manager 5.1 Proxy Deployment

This guide outlines the deployment process for the SUSE Multi-Linux Manager 5.1 Proxy container on SL Micro 6.1 or SUSE Linux Enterprise Server 15 SP7. This guide presumes you have already successfully deployed a SUSE Multi-Linux Manager 5.1 Server.



SL Micro is only supported as regular minion (default contact method) for the time being.
We are working on managing it as Salt SSH client (salt-ssh contact method), too.

To successfully deploy, you will perform the following actions:

Procedure: Deploying Proxy

1. Review hardware requirements.
2. Synchronize the SL Micro 6.1 or SUSE Linux Enterprise Server 15 SP7 parent channel and the proxy extension child channel on the server.
3. Install SL Micro or SUSE Linux Enterprise Server on a bare-metal machine.
4. During the installation, register SL Micro or SUSE Linux Enterprise Server along with the SUSE Multi-Linux Manager Proxy extension.
5. Create a Salt activation key.
6. Bootstrap the proxy as a client with the **default** connection method.
7. Generate a proxy configuration.
8. Transfer the proxy configuration from server to proxy.
9. Use the proxy configuration to register the client as a proxy with SUSE Multi-Linux Manager.



Supported operating system for the Proxy Container Host

The supported operating system for the container host are SL Micro 6.1 and SUSE Linux Enterprise Server 15 SP7.

Container host

A container host is a server equipped with a container engine like Podman, which lets it manage and deploy containers. These containers hold applications and their essential parts, such as libraries, but not a full operating system, making them lightweight. This setup ensures applications run the same way in different environments. The container host supplies the necessary resources such as CPU, memory, and storage for these containers.

3.2.1.1. Hardware Requirements for the Proxy

For more information about hardware requirements for deploying SUSE Multi-Linux Manager Proxy, see [installation-and-upgrade:hardware-requirements.pdf](#).

3.2.1.2. Synchronize the Parent and Proxy Extension Child Channels

This section presumes that you have already entered your organization credentials under the **Admin › Setup Wizard › Organization Credentials** in the server's Web UI. Products are listed on the **Admin › Setup Wizard › Products** page. This channel must be fully synchronized on the server, with the child channel Proxy as an extension option selected.

Procedure: Synchronizing the Parent Channel and Proxy Extension

1. In the SUSE Multi-Linux Manager Web UI select **Admin › Products**.
2. From the products page enter SL Micro or SUSE Linux Enterprise Server in the filter field.
3. Next use the drop-down to select the required architecture. For this example x86-64.
4. In the Product Description field select the SL Micro 6.1 or SUSE Linux Enterprise Server 15 SP7 checkbox then use the drop-down to select the SUSE Multi-Linux Manager Proxy Extension 5.1 x86_64 extension.
5. Click the **[Add products]** button.
6. Wait for the synchronization to complete.

3.2.1.3. Prepare SUSE Multi-Linux Manager Proxy Host

In the following subsections, you either prepare the proxy host with SLE Micro or SUSE Linux Enterprise Server.

3.2.1.3.1. Prepare SL Micro 6.1 Host

Download the installation media

Procedure: Downloading the Installation Media

1. Locate the SL Micro 6.1 installation media at <https://www.suse.com/download/sle-micro/>, and download the appropriate media file.
2. Prepare a DVD or USB flash drive with the downloaded .iso image for installation.

Install SL Micro 6.1

For more information about preparing your machines (virtual or physical), see the [SL Micro Deployment Guide](#).

Procedure: Installing SL Micro 6.1

1. Insert the DVD or USB flash drive (USB disk or key) containing the installation image for SLE Micro 6.1.
2. Boot or reboot your system.
3. Use the arrow keys to select Installation.
4. Adjust Keyboard and language.
5. Click the checkbox to accept the license agreement.
6. Click Next to continue.
7. Select the registration method. For this example, we will register the server with SUSE Customer Center.



The SUSE Multi-Linux Manager 5.1 containers are installed as extensions. Depending on the specific extension needed from the list below, additional SUSE Customer Center registration codes will be required for each.

- SUSE Multi-Linux Manager 5.1 Server
- SUSE Multi-Linux Manager 5.1 Proxy
- SUSE Multi-Linux Manager 5.1 Retail Branch Server



The SL Micro 6.1 entitlement is included within the SUSE Multi-Linux Manager entitlement, so it does not require a separate registration code.

8. Enter your SUSE Customer Center email address.
9. Enter your registration code for SL Micro 6.1.
10. Click Next to continue.

11. To install a proxy, select the SUSE Multi-Linux Manager 5.1 Proxy extension; to install a server, select the SUSE Multi-Linux Manager 5.1 Server extension Checkbox.
12. Click Next to continue.
13. Enter your SUSE Multi-Linux Manager 5.1 extension registration code.
14. Click **[Next]** to continue.
15. On the NTP Configuration page click **[Next]**.
16. On the Authentication for the System page enter a password for the root user. Click **[Next]**.
17. On the Installation Settings page click **[Install]**.

This concludes installation of SL Micro 6.1 and SUSE Multi-Linux Manager 5.1 as an extension.

OPTIONAL: Registration from the command line

If you added SUSE Multi-Linux Manager 5.1 as an extension during SL Micro 6.1 installation then you can skip this procedure. However, optionally you may skip registration during SL Micro 6.1 installation by selecting the **[Skip Registration]** button. This section provides steps on registering your products after SL Micro 6.1 installation.



The following steps register a SUSE Multi-Linux Manager 5.1 extension with the x86-64 architecture and thus require a registration code for the x86-64 architecture. To register ARM or s390x architectures use the correct registration code.

Procedure: Registering from the Command Line

1. List available extensions with the following command:

```
transactional-update --quiet register --list-extensions
```

2. From the list of available extensions, select the one you wish to install:

- a. If installing the Server, use your SUSE Multi-Linux Manager Server Extension 5.1 x86_64 registration code with following command:

```
transactional-update register -p Multi-Linux-Manager-Server/5.1/x86_64 -r <reg_code>
```

- b. If installing the Proxy, use your SUSE Multi-Linux Manager Proxy Extension 5.1 x86_64 registration code with following command:

```
transactional-update register -p Multi-Linux-Manager-Proxy/5.1/x86_64 -r <reg_code>
```

3. Reboot.

Update the system

Procedure: Updating the System

1. Log in as **root**.
2. Run **transactional-update**:

```
transactional-update
```

3. Reboot.



SL Micro is designed to update itself automatically by default and will reboot after applying updates. However, this behavior is not desirable for the SUSE Multi-Linux Manager environment. To prevent automatic updates on your server, SUSE Multi-Linux Manager disables the transactional-update timer during the bootstrap process.

If you prefer the SL Micro default behavior, enable the timer by running the following command:

```
systemctl enable --now transactional-update.timer
```

To continue with deployment, see [installation-and-upgrade:container-deployment/mlm/proxy-deployment-mlm.pdf](#).

3.2.1.3.2. Prepare SUSE Linux Enterprise Server 15 SP7 Host

Alternatively, you can deploy SUSE Multi-Linux Manager on SUSE Linux Enterprise Server 15 SP7.

The following procedure describes the main steps of the installation process.

Procedure: Installing SUSE Multi-Linux Manager Extensions on SUSE Linux Enterprise Server 15 SP7

1. Locate and download SUSE Linux Enterprise Server 15 SP7 .iso at <https://www.suse.com/download/sles/>.
2. Make sure that you have registration codes both for the host operating system (SUSE Linux Enterprise Server 15 SP7) and extensions
3. Start the installation of SUSE Linux Enterprise Server 15 SP7.
 - a. On the Language, keyboard and product selection select the product to install.

- b. On the License agreement read the agreement and check I Agree to the License Terms.
4. Select the registration method. For this example, we will register the server with SUSE Customer Center.
5. Enter your SUSE Customer Center email address.
6. Enter your registration code for SUSE Linux Enterprise Server 15 SP7.
7. Click Next to continue.



Please note that for SUSE Linux Enterprise Server 15 SP7, you are required to have a valid SUSE Linux Enterprise Server subscription and corresponding registration code, which you must provide on this screen. You will be required to enter the SUSE Multi-Linux Manager Extension registration code below.

8. In the screen Extensions and Modules Selection check the following:
 - Select the SUSE Multi-Linux Manager Server Extension to install the Server, or the SUSE Multi-Linux Manager Proxy Extension to install the Proxy.
 - Basesystem Module
 - Containers Module
9. Click Next to continue.
10. Enter your SUSE Multi-Linux Manager 5.1 extension registration code.
11. Click **[Next]** to continue.
12. Complete the installation.
13. When the installation completes, log in to the newly installed server as root.
14. Update the System (optional, if the system was not set to download updates during install):

```
zypper up
```

15. Reboot.
16. Log in as root and install podman plus mgradm and mgradm-bash-completion (if not already automatically installed):

```
zypper install podman mgradm mgradm-bash-completion
```

17. Start the Podman service by rebooting the system, or running a command:

```
systemctl enable --now podman.service
```

To continue with deployment, see [installation-and-upgrade:container-deployment/mlm/proxy-](#)

[deployment-mlm.pdf](#).

3.2.1.4. Configure Custom Persistent Storage

Configuring persistent storage is optional, but it is the only way to avoid serious trouble with container full disk conditions. If custom persistent storage is required for your infrastructure, use the `mgr-storage-proxy` tool.

- For more information, see `mgr-storage-proxy --help`. This tool simplifies creating the container storage and Squid cache volumes.

Use the command in the following manner:

```
mgr-storage-proxy <storage-disk-device>
```

For example:

```
mgr-storage-proxy /dev/nvme1n1
```



This command will create the persistent storage volumes at `/var/lib/containers/storage/volumes`.

For more information, see

- [Installation-and-upgrade › Container-management](#)
- [Administration › Troubleshooting](#)

3.2.1.5. Create an Activation Key for the Proxy

Procedure: Creating an Activation Key

1. Navigate to **Systems › Activation Keys**, and click **[Create key]**.
2. Create an activation key for the proxy host with SL Micro 6.1 or SUSE Linux Enterprise Server 15 SP7 as the parent channel. This key should include all recommended channels and the proxy as an extension child channel.
3. Proceed to bootstrapping the proxy host as a default client.

3.2.1.6. Bootstrap the Proxy Host as a Client

Procedure: Bootstrapping the Proxy Host

1. Select **Systems › Bootstrapping**.

2. Fill in the fields for your proxy host.
3. Select the activation key created in the previous step from the drop-down.
4. Click **[Bootstrap]**.
5. Wait for the bootstrap process to complete successfully. Check the **Salt** menu and confirm the Salt key is listed and accepted.
6. Reboot the proxy host if the operating system is SL Micro.
7. Select the host from the **System** list and trigger a second reboot in case of SL Micro after all events are finished to conclude the onboarding.

Procedure: Updating the Proxy Host

1. Select the host from the **Systems** list and apply all patches to update it.
2. Reboot the proxy host if the operating system is SL Micro.

3.2.1.7. Generate Proxy Configuration

The configuration archive of the SUSE Multi-Linux Manager Proxy is generated by the SUSE Multi-Linux Manager Server. Each additional Proxy requires its own configuration archive.



- For Podman deployment, the container host for the SUSE Multi-Linux Manager Proxy must be registered as a client to the SUSE Multi-Linux Manager Server prior to generating this proxy configuration.

If a proxy FQDN is used to generate a proxy container configuration that is not a registered client (as in the Kubernetes use case), a new system entry will appear in system list. This new entry will be shown under previously entered Proxy FQDN value and will be of Foreign system type.

3.2.1.7.1. Generate the Proxy Configuration with Web UI

Procedure: Generating a Proxy Container Configuration Using Web UI

1. In the Web UI, navigate to **Systems › Proxy Configuration** and fill the required data:
2. In the Proxy FQDN field type fully qualified domain name for the proxy.
3. In the Parent FQDN field type fully qualified domain name for the SUSE Multi-Linux Manager Server or another SUSE Multi-Linux Manager Proxy.
4. In the Proxy SSH port field type SSH port on which SSH service is listening on SUSE Multi-Linux Manager Proxy. Recommended is to keep default 8022.
5. In the Max Squid cache size [MB] field type maximal allowed size for Squid cache. Recommended is to use at most 80% of available storage for the containers.



2 GB represents the default proxy squid cache size. This will need to be adjusted for your environment.

6. In the SSL certificate selection list choose if new server certificate should be generated for SUSE Multi-Linux Manager Proxy or an existing one should be used. You can consider generated certificates as SUSE Multi-Linux Manager builtin (self signed) certificates.

Depending on the choice then provide either path to signing CA certificate to generate a new certificate or path to an existing certificate and its key to be used as proxy certificate.

The CA certificates generated by the server are stored in the `/var/lib/containers/storage/volumes/root/_data/ssl-build` directory.

For more information about existing or custom certificates and the concept of corporate and intermediate certificates, see **Administration › Ssl-certs-imported**.

7. Click **[Generate]** to register a new proxy FQDN in the SUSE Multi-Linux Manager Server and generate a configuration archive (`config.tar.gz`) containing details for the container host.
8. After a few moments you are presented with file to download. Save this file locally.

3.2.1.7.2. Generate Proxy Configuration With spacecmd and Self-Signed Certificate

You can generate a Proxy configuration using spacecmd.

Procedure: Generating Proxy Configuration with spacecmd and Self-Signed Certificate

1. SSH into your container host.
2. Execute the following command replacing the Server and Proxy FQDN:

```
mgctl exec -ti 'spacecmd proxy_container_config_generate_cert -- dev-pxy.example.com
dev-srv.example.com 2048 email@example.com -o /tmp/config.tar.gz'
```

3. Copy the generated configuration from the server container:

```
mgctl cp server:/tmp/config.tar.gz .
```

3.2.1.7.3. Generate Proxy Configuration With spacecmd and Custom Certificate

You can generate a Proxy configuration using spacecmd for a custom certificates rather than the default self-

signed certificates.

Procedure: Generating Proxy Configuration with spacecmd and Custom Certificate

1. SSH into your Server container host.
2. Execute the following command replacing the Server and Proxy FQDN:

```
for f in ca.crt proxy.crt proxy.key; do
  mgrctl cp $f server:/tmp/$f
done
mgrctl exec -ti 'spacecmd proxy_container_config -- -p 8022 pxy.example.com
srv.example.com 2048 email@example.com /tmp/ca.crt /tmp/proxy.crt /tmp/proxy.key -o
/tmp/config.tar.gz'
```

3. Copy the generated configuration from the server container:

```
mgrctl cp server:/tmp/config.tar.gz .
```

3.2.1.8. Transfer the Proxy Configuration

The Web UI generates a configuration archive. This archive needs to be made available on the proxy container host.

Procedure: Copying the Proxy Configuration

1. If not already done, copy the configuration archive (config.tar.gz) generated in the previous step from the server container to the server host:

```
mgrctl cp server:/root/config.tar.gz .
```

2. If not already done, copy the files from the server host to the proxy host:

```
scp config.tar.gz <proxy-FQDN>:/root
```

3. On the proxy host, install the Proxy with:

```
mgrpxy install podman config.tar.gz
```

3.2.1.9. Start the SUSE Multi-Linux Manager Proxy

Container can now be started with the mgrpxy command:

Procedure: Starting and Checking Proxy Status

1. Start the proxy by calling:

```
mgrpky start
```

2. Check container status by calling:

```
mgrpky status
```

Five SUSE Multi-Linux Manager Proxy containers should be present and should be part of the proxy-pod container pod:

- proxy-salt-broker
- proxy-httpd
- proxy-tftpd
- proxy-squid
- proxy-ssh

3.2.1.10. Use a Custom Container Image for a Service

By default, the SUSE Multi-Linux Manager Proxy suite is configured to use the same image version and registry path for each of its services. However, it is possible to override the default values for a specific service using the install parameters ending with `-tag` and `-image`.

For example:

```
mgrpky install podman --httpd-tag 0.1.0 --httpd-image registry.opensuse.org/uyuni/proxy-httpd /path/to/config.tar.gz
```

It adjusts the configuration file for the httpd service, where `registry.opensuse.org/uyuni/proxy-httpds` is the image to use and `0.1.0` is the version tag, before restarting it.

To reset the values to defaults, run the install command again without those parameters:

```
mgrpky install podman /path/to/config.tar.gz
```

This command first resets the configuration of all services to the global defaults and then reloads it.

3.2.2. Proxy conversion from client

3.2.2.1. Introduction

This chapter describes how SUSE Multi-Linux Manager proxy can be registered with SUSE Multi-Linux Manager server. The main principle consists of using a functionality within Web UI which converts an already onboarded client to a proxy.

The client which is a candidate for conversion to proxy must adhere to the following pre-requisites:

- it must already be onboarded
- it is reachable
- it has access to client tools
- it is a transactional system

3.2.2.2. Convert the client to SUSE Multi-Linux Manager Proxy

The process of conversion is done entirely from the Web UI for already registered clients. For more information about client onboarding, see **Client-configuration › Registration-overview**.

The following two procedures describe the client conversion to a proxy. Either procedure can be used, and will achieve the same outcome.

Procedure: Converting client to SUSE Multi-Linux Manager Proxy using dedicated button

1. For the client chosen to be converted to proxy, go to its Overview page.
2. Click button **[Convert to Proxy]**.
3. Wait for the conversion to complete.
4. Confirm that the conversion has been successful by locating a new tab Proxy on the Overview page.

Procedure: Converting client to SUSE Multi-Linux Manager Proxy by changing client's properties

1. For the client chosen to be converted to proxy, go to its Properties page.
2. Locate the section Add-on System Types.
3. Check the option Proxy.
4. Click button **[Update Properties]**.

5. Follow the displayed note and apply highstate to complete the conversion.
6. Confirm that the conversion has been successful by locating a new tab Proxy on the Overview page.

3.2.3. SUSE Multi-Linux Manager Proxy Deployment as a Virtual Machine - KVM

This chapter provides the Virtual Machine settings for deployment of SUSE Multi-Linux Manager 5.1 Proxy as an image. KVM will be combined with Virtual Machine Manager (virt-manager) as a sandbox for this installation.

3.2.3.1. Available Images



The preferred method for deploying SUSE Multi-Linux Manager Proxy is to use one of the following available images. All tools are included in these images simplifying deployment.

Images for SUSE Multi-Linux Manager 5.1 Proxy are available at [SUSE Multi-Linux Manager 5.1 VM images](#).



Customized SUSE Multi-Linux Manager 5.1 VM images are provided only for SL Micro 6.1. To run the product on SUSE Linux Enterprise Server 15 SP7, use the standard SUSE Linux Enterprise Server 15 SP7 installation media available at <https://www.suse.com/download/sles/> and enable the SUSE Multi-Linux Manager 5.1 extensions on top of it.



For more information on preparing raw images, see <https://documentation.suse.com/sle-micro/6.1/html/Micro-deployment-raw-images-virtual-machines/index.html#deployment-preparing-configuration-device>.

For additional information on the self install images, see <https://documentation.suse.com/sle-micro/6.1/html/Micro-deployment-selfinstall-images/index.html>

Table 12. Available Proxy Images

Architecture	Image Format
aarch64	qcow2, vmdk
x86_64	qcow2, vmdk, raw, Self Installer

3.2.3.2. Virtual Machine Manager (virt-manager) Settings

Enter the following settings when creating a new virtual machine using **virt-manager**.



This table specifies the minimum requirements. These are suitable for a quick test

installation, such as a proxy with one client.

If you want to use a production environment and need background information about disk space, see **Installation-and-upgrade › Hardware-requirements**.

KVM Settings	
Installation Method	Import Existing Disk Image
OS:	Linux
Version:	SUSE Multi-Linux Manager-Proxy.x86_64-5.1.*.qcow2
Memory:	Minimum *)
CPU's:	Minimum *)
Storage Format:	.qcow2 40 GB (Default) Root Partition
Name:	test-setup
Network	Bridge br0

*) For minimum values, see [installation-and-upgrade:hardware-requirements.pdf](#).



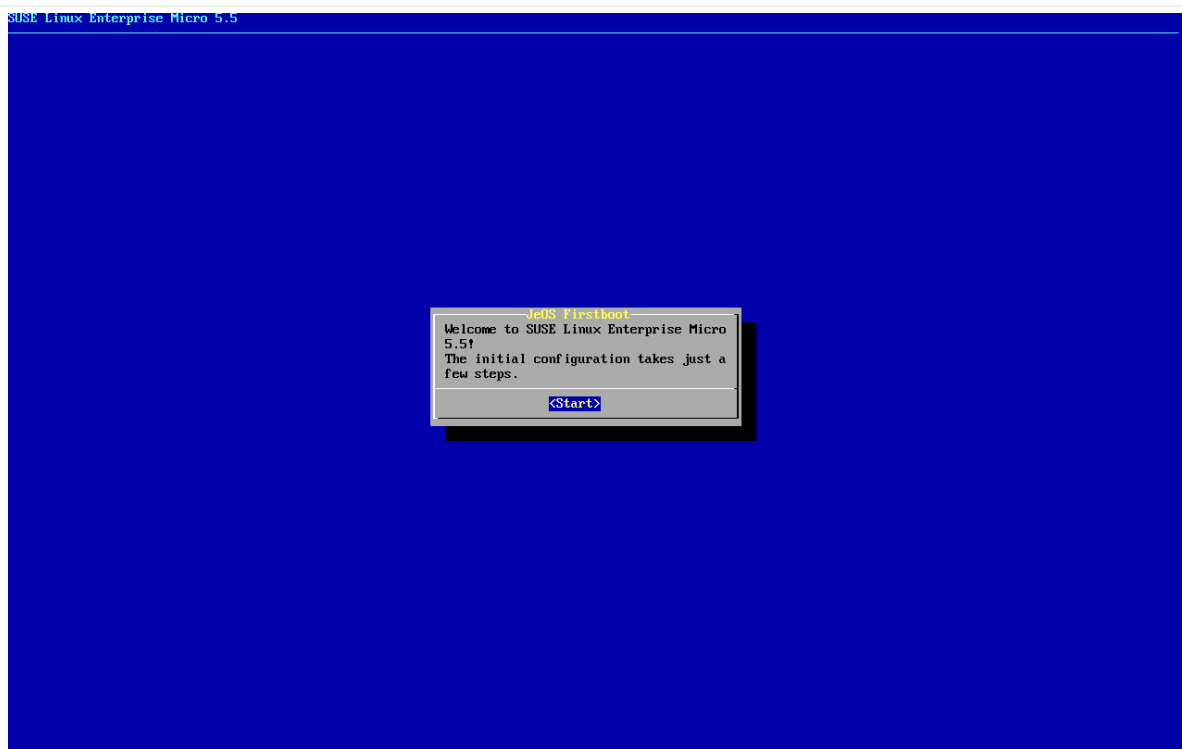
/var/lib/containers/storage/volumes Minimum 100 GB. Storage requirements should be calculated for the number of ISO distribution images, containers, and bootstrap repositories you will use.

3.2.3.3. Initial KVM Setup

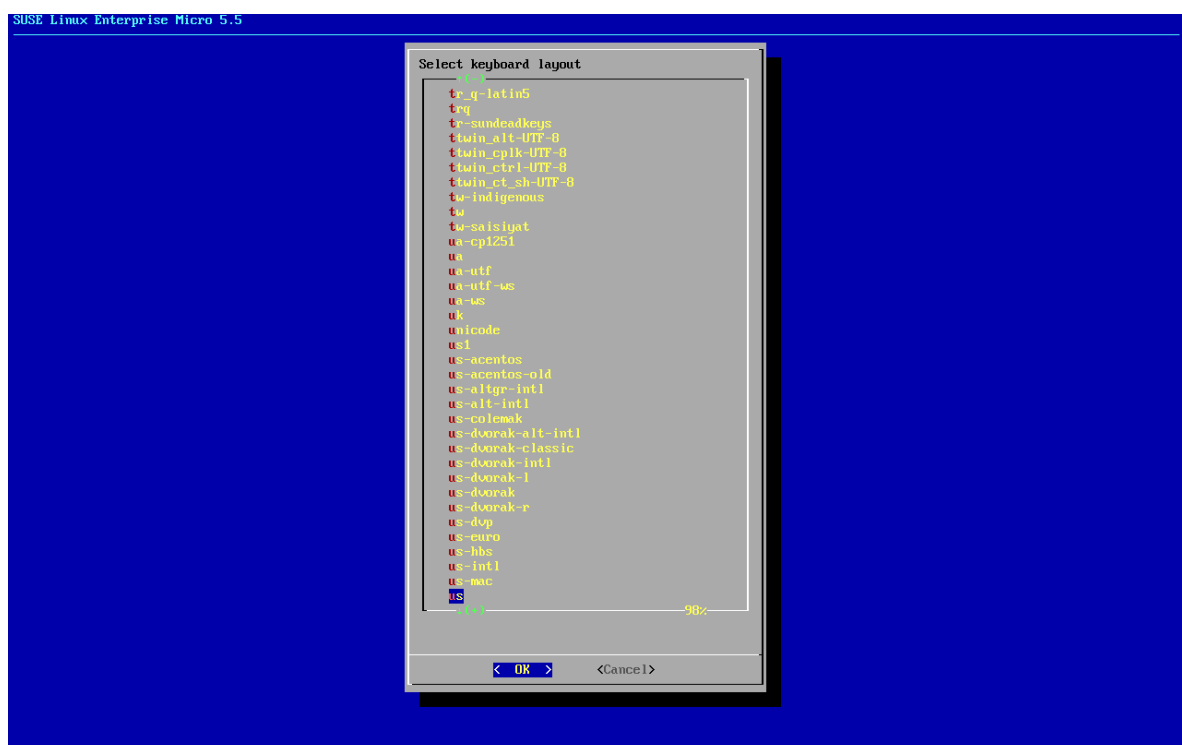
For settings, see [installation-and-upgrade:container-deployment/mlm/proxy-deployment-vm-mlm.pdf](#).

Procedure: Creating Initial Setup

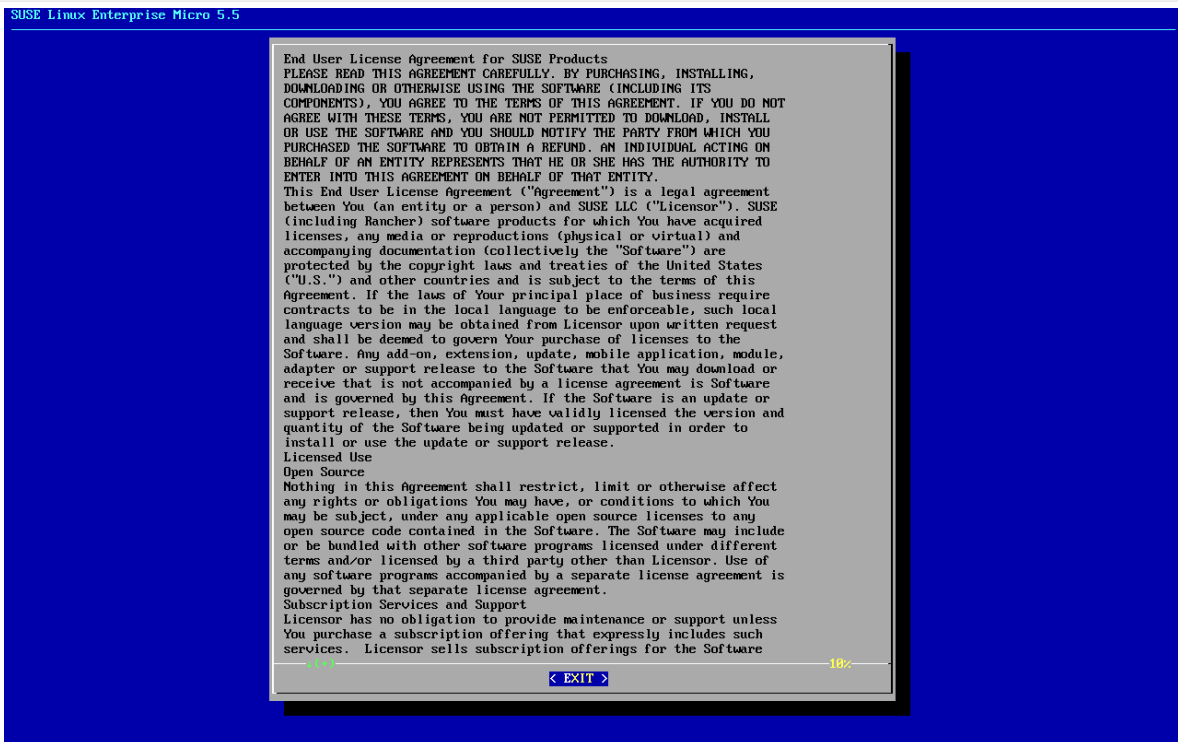
1. Create a new virtual machine using the downloaded Minimal KVM image and select Import existing disk image.
2. Configure RAM and number of CPUs with minimum values. *)
3. Name your KVM machine and select the Customize configuration before install check box.
4. Click **[Begin Installation]** to boot from the image.
5. At the JeOS Firstboot screen select start to continue.



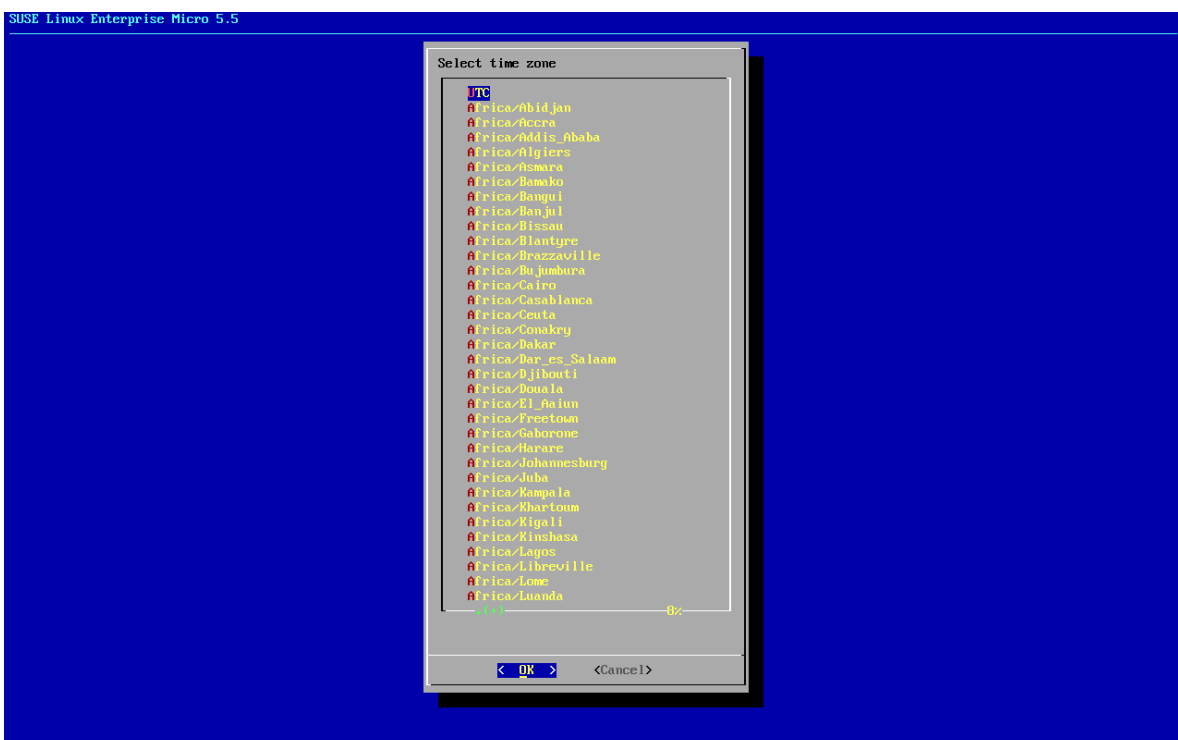
6. Select keyboard layout.



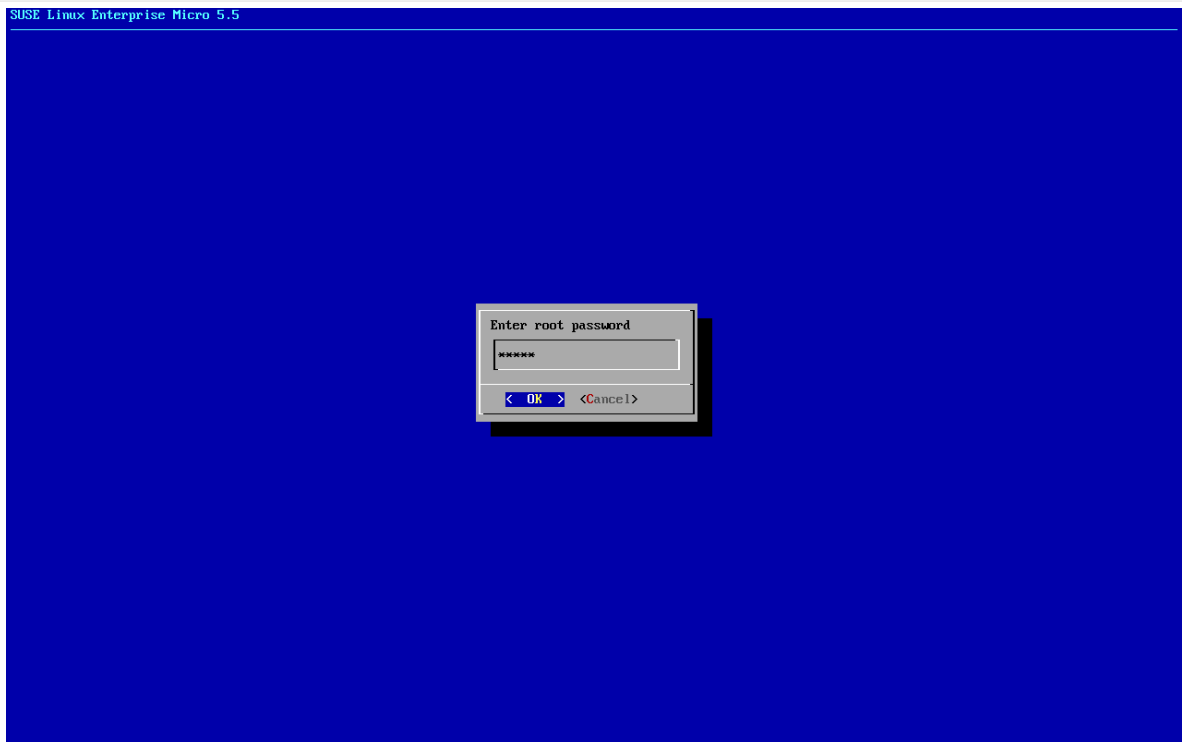
7. Accept the license agreement.



8. Select your time zone.



9. Enter a password for root.



10. When installation completes log in as root.
11. Proceed to the next section.

*) For minimum values, see [installation-and-upgrade:hardware-requirements.pdf](#).

3.2.3.4. Register SL Micro and SUSE Multi-Linux Manager 5.1 Proxy

Procedure: Registering SL Micro and SUSE Multi-Linux Manager 5.1 Proxy

1. Boot the virtual machine.
2. Log in as root.
3. Register SL Micro with SCC.

```
transactional-update register -r <REGCODE> -e <your_email>
```

4. Reboot.
5. Register SUSE Multi-Linux Manager 5.1 Proxy with SUSE Customer Center.

```
transactional-update register -p Multi-Linux-Manager-Proxy/5.1/x86_64 -r <REGCODE>
```

6. Reboot.

7. Update the system:

```
transactional-update
```

8. If updates were applied reboot.

9. This step is optional. However, if custom persistent storage is required for your infrastructure, use the `mgr-storage-proxy` tool.

- For more information, see `mgr-storage-proxy --help`. This tool simplifies creating the container volumes.
- Use the command in the following manner:

```
mgr-storage-proxy <storage-disk-device>
```

For example:

```
mgr-storage-proxy /dev/nvme1n1
```

This command will move the persistent storage volumes at `/var/lib/containers/storage/volumes` to the specified storage device.



For more information, see

- **Installation-and-upgrade › Container-management**
- **Administration › Troubleshooting**

3.2.3.5. Create an Activation Key for the Proxy

Procedure: Creating an Activation Key

- Navigate to **Systems › Activation Keys**, and click **[Create key]**.
- Create an activation key for the proxy host with SL Micro 6.1 or SUSE Linux Enterprise Server 15 SP7 as the parent channel. This key should include all recommended channels and the proxy as an extension child channel.
- Proceed to bootstrapping the proxy host as a default client.

3.2.3.6. Bootstrap the Proxy Host as a Client

Procedure: Bootstrapping the Proxy Host

- Select **Systems › Bootstrapping**.

2. Fill in the fields for your proxy host.
3. Select the activation key created in the previous step from the drop-down.
4. Click **[Bootstrap]**.
5. Wait for the bootstrap process to complete successfully. Check the **Salt** menu and confirm the Salt key is listed and accepted.
6. Reboot the proxy host if the operating system is SL Micro.
7. Select the host from the **System** list and trigger a second reboot in case of SL Micro after all events are finished to conclude the onboarding.

Procedure: Updating the Proxy Host

1. Select the host from the **Systems** list and apply all patches to update it.
2. Reboot the proxy host if the operating system is SL Micro.

3.2.3.7. Generate Proxy Configuration

The configuration archive of the SUSE Multi-Linux Manager Proxy is generated by the SUSE Multi-Linux Manager Server. Each additional Proxy requires its own configuration archive.



- For Podman deployment, the container host for the SUSE Multi-Linux Manager Proxy must be registered as a client to the SUSE Multi-Linux Manager Server prior to generating this proxy configuration.

If a proxy FQDN is used to generate a proxy container configuration that is not a registered client (as in the Kubernetes use case), a new system entry will appear in system list. This new entry will be shown under previously entered Proxy FQDN value and will be of Foreign system type.

3.2.3.7.1. Generate the Proxy Configuration with Web UI

Procedure: Generating a Proxy Container Configuration Using Web UI

1. In the Web UI, navigate to **Systems › Proxy Configuration** and fill the required data:
2. In the Proxy FQDN field type fully qualified domain name for the proxy.
3. In the Parent FQDN field type fully qualified domain name for the SUSE Multi-Linux Manager Server or another SUSE Multi-Linux Manager Proxy.
4. In the Proxy SSH port field type SSH port on which SSH service is listening on SUSE Multi-Linux Manager Proxy. Recommended is to keep default 8022.
5. In the Max Squid cache size [MB] field type maximal allowed size for Squid cache. Recommended is to use at most 80% of available storage for the containers.



2 GB represents the default proxy squid cache size. This will need to be adjusted for your environment.

6. In the SSL certificate selection list choose if new server certificate should be generated for SUSE Multi-Linux Manager Proxy or an existing one should be used. You can consider generated certificates as SUSE Multi-Linux Manager builtin (self signed) certificates.

Depending on the choice then provide either path to signing CA certificate to generate a new certificate or path to an existing certificate and its key to be used as proxy certificate.

The CA certificates generated by the server are stored in the `/var/lib/containers/storage/volumes/root/_data/ssl-build` directory.

For more information about existing or custom certificates and the concept of corporate and intermediate certificates, see **Administration › Ssl-certs-imported**.

7. Click **[Generate]** to register a new proxy FQDN in the SUSE Multi-Linux Manager Server and generate a configuration archive (`config.tar.gz`) containing details for the container host.
8. After a few moments you are presented with file to download. Save this file locally.

3.2.3.7.2. Generate Proxy Configuration With spacecmd and Self-Signed Certificate

You can generate a Proxy configuration using `spacecmd`.

Procedure: Generating Proxy Configuration with spacecmd and Self-Signed Certificate

1. SSH into your container host.
2. Execute the following command replacing the Server and Proxy FQDN:

```
mgctl exec -ti 'spacecmd proxy_container_config_generate_cert -- dev-pxy.example.com
dev-srv.example.com 2048 email@example.com -o /tmp/config.tar.gz'
```

3. Copy the generated configuration from the server container:

```
mgctl cp server:/tmp/config.tar.gz .
```

3.2.3.7.3. Generate Proxy Configuration With spacecmd and Custom Certificate

You can generate a Proxy configuration using `spacecmd` for a custom certificates rather than the default self-

signed certificates.

Procedure: Generating Proxy Configuration with spacecmd and Custom Certificate

1. SSH into your Server container host.
2. Execute the following command replacing the Server and Proxy FQDN:

```
for f in ca.crt proxy.crt proxy.key; do
  mgrctl cp $f server:/tmp/$f
done
mgrctl exec -ti 'spacecmd proxy_container_config -- -p 8022 pxy.example.com
srv.example.com 2048 email@example.com /tmp/ca.crt /tmp/proxy.crt /tmp/proxy.key -o
/tmp/config.tar.gz'
```

3. Copy the generated configuration from the server container:

```
mgrctl cp server:/tmp/config.tar.gz .
```

3.2.3.8. Transfer the Proxy Configuration

The Web UI generates a configuration archive. This archive needs to be made available on the proxy container host.

Procedure: Copying the Proxy Configuration

1. If not already done, copy the configuration archive (config.tar.gz) generated in the previous step from the server container to the server host:

```
mgrctl cp server:/root/config.tar.gz .
```

2. If not already done, copy the files from the server host to the proxy host:

```
scp config.tar.gz <proxy-FQDN>:/root
```

3. On the proxy host, install the Proxy with:

```
mgrpxy install podman config.tar.gz
```

3.2.3.9. Start the SUSE Multi-Linux Manager 5.1 Proxy

Container can now be started with the mgrpxy command:

Procedure: Start and Check Proxy Status

1. Start the Proxy by calling:

```
mgrpky start
```

2. Check container status by calling:

```
mgrpky status
```

Five SUSE Multi-Linux Manager Proxy containers should be present and should be part of the proxy-pod container pod:

- proxy-salt-broker
- proxy-httpd
- proxy-tftpd
- proxy-squid
- proxy-ssh

3.2.3.9.1. Using a Custom Container Image for a Service

By default, the SUSE Multi-Linux Manager Proxy suite is set to use the same image version and registry path for each of its services. However, it is possible to override the default values for a specific service using the install parameters ending with `-tag` and `-image`.

For example, use it like this:

```
mgrpky install podman --httpd-tag 0.1.0 --httpd-image registry.opensuse.org/uyuni/proxy-httpd /path/to/config.tar.gz
```

It adjusts the configuration file for the httpd service, where `registry.opensuse.org/uyuni/proxy-httpds` is the image to use and `0.1.0` is the version tag, before restarting it.

To reset the values to defaults, run the install command again without those parameters:

```
mgrpky install podman /path/to/config.tar.gz
```

This command first resets the configuration of all services to the global defaults and then reloads it.

3.2.4. SUSE Multi-Linux Manager Proxy Deployment as a Virtual Machine - VMware

This chapter provides the Virtual Machine settings for deployment of SUSE Multi-Linux Manager 5.1 Proxy as an image. VMware will be used as a sandbox for this installation.

3.2.4.1. Available Images



The preferred method for deploying SUSE Multi-Linux Manager Proxy is to use one of the following available images. All tools are included in these images simplifying deployment.

Images for SUSE Multi-Linux Manager 5.1 Proxy are available at [SUSE Multi-Linux Manager 5.1 VM images](#).



Customized SUSE Multi-Linux Manager 5.1 VM images are provided only for SL Micro 6.1. To run the product on SUSE Linux Enterprise Server 15 SP7, use the standard SUSE Linux Enterprise Server 15 SP7 installation media available at <https://www.suse.com/download/sles/> and enable the SUSE Multi-Linux Manager 5.1 extensions on top of it.



For more information on preparing raw images, see <https://documentation.suse.com/sle-micro/6.1/html/Micro-deployment-raw-images-virtual-machines/index.html#deployment-preparing-configuration-device>.

For additional information on the self install images, see <https://documentation.suse.com/sle-micro/6.1/html/Micro-deployment-selfinstall-images/index.html>

Table 13. Available Proxy Images

Architecture	Image Format
aarch64	qcow2, vmdk
x86_64	qcow2, vmdk, raw, Self Installer

3.2.4.2. Virtual Machine Settings - VMware

This section describes VMware configurations, focusing on the creation of an extra virtual disk essential for the SUSE Multi-Linux Manager Proxy storage partition within VMware environments.



This section specifies the minimum requirements. These are suitable for a quick test installation, such as a proxy with one client.

If you want to use a production environment and need background information about disk

space, see **Installation-and-upgrade › Hardware-requirements.**

Procedure: Creating the VMware Virtual Machine

1. Download SUSE Multi-Linux Manager Proxy .vmdk file then transfer a copy to your VMware storage.
2. Make a copy of uploaded .vmdk file using VMware web interface. This will convert provided .vmdk file to the format suitable for vSphere hypervisor.
3. Create and name a new virtual machine based on the Guest OS Family Linux and Guest OS Version SUSE Linux Enterprise 15 (64-bit).
4. Add an additional Hard Disk 2 of 100 GB (or more).
5. Configure RAM and number of CPUs with minimum values. *)
6. Set the network adapter as required.
7. Power on the VM, and follow firstboot dialogs (keyboard layout, license agreement, time zone, password for root).
8. When installation completes log in as root.
9. Proceed to the next section.

*) For minimum values, see [installation-and-upgrade:hardware-requirements.pdf](#).

3.2.4.3. Register SL Micro and SUSE Multi-Linux Manager 5.1 Proxy

Procedure: Registering SL Micro and SUSE Multi-Linux Manager 5.1 Proxy

1. Boot the virtual machine.
2. Log in as root.
3. Register SL Micro with SCC.

```
transactional-update register -r <REGCODE> -e <your_email>
```

4. Reboot.
5. Register SUSE Multi-Linux Manager 5.1 Proxy with SUSE Customer Center.

```
transactional-update register -p Multi-Linux-Manager-Proxy/5.1/x86_64 -r <REGCODE>
```

6. Reboot.
7. Update the system:

```
transactional-update
```

8. If updates were applied reboot.
9. This step is optional. However, if custom persistent storage is required for your infrastructure, use the `mgr-storage-proxy` tool.
 - For more information, see `mgr-storage-proxy --help`. This tool simplifies creating the container volumes.
 - Use the command in the following manner:

```
mgr-storage-proxy <storage-disk-device>
```

For example:

```
mgr-storage-proxy /dev/nvme1n1
```

This command will move the persistent storage volumes at `/var/lib/containers/storage/volumes` to the specified storage device.



For more information, see

- [Installation-and-upgrade › Container-management](#)
- [Administration › Troubleshooting](#)

3.2.4.4. Create an Activation Key for the Proxy

Procedure: Creating an Activation Key

1. Navigate to **Systems › Activation Keys**, and click **[Create key]**.
2. Create an activation key for the proxy host with SL Micro 6.1 or SUSE Linux Enterprise Server 15 SP7 as the parent channel. This key should include all recommended channels and the proxy as an extension child channel.
3. Proceed to bootstrapping the proxy host as a default client.

3.2.4.5. Bootstrap the Proxy Host as a Client

Procedure: Bootstrapping the Proxy Host

1. Select **Systems › Bootstrapping**.
2. Fill in the fields for your proxy host.

3. Select the activation key created in the previous step from the drop-down.
4. Click **[Bootstrap]**.
5. Wait for the bootstrap process to complete successfully. Check the **Salt** menu and confirm the Salt key is listed and accepted.
6. Reboot the proxy host if the operating system is SL Micro.
7. Select the host from the **System** list and trigger a second reboot in case of SL Micro after all events are finished to conclude the onboarding.

Procedure: Updating the Proxy Host

1. Select the host from the **Systems** list and apply all patches to update it.
2. Reboot the proxy host if the operating system is SL Micro.

3.2.4.6. Generate Proxy Configuration

The configuration archive of the SUSE Multi-Linux Manager Proxy is generated by the SUSE Multi-Linux Manager Server. Each additional Proxy requires its own configuration archive.



For Podman deployment, the container host for the SUSE Multi-Linux Manager Proxy must be registered as a client to the SUSE Multi-Linux Manager Server prior to generating this proxy configuration.

If a proxy FQDN is used to generate a proxy container configuration that is not a registered client (as in the Kubernetes use case), a new system entry will appear in system list. This new entry will be shown under previously entered Proxy FQDN value and will be of Foreign system type.

3.2.4.6.1. Generate the Proxy Configuration with Web UI

Procedure: Generating a Proxy Container Configuration Using Web UI

1. In the Web UI, navigate to **Systems › Proxy Configuration** and fill the required data:
2. In the Proxy FQDN field type fully qualified domain name for the proxy.
3. In the Parent FQDN field type fully qualified domain name for the SUSE Multi-Linux Manager Server or another SUSE Multi-Linux Manager Proxy.
4. In the Proxy SSH port field type SSH port on which SSH service is listening on SUSE Multi-Linux Manager Proxy. Recommended is to keep default 8022.
5. In the Max Squid cache size [MB] field type maximal allowed size for Squid cache. Recommended is to use at most 80% of available storage for the containers.



2 GB represents the default proxy squid cache size. This will need to be adjusted for

your environment.

6. In the SSL certificate selection list choose if new server certificate should be generated for SUSE Multi-Linux Manager Proxy or an existing one should be used. You can consider generated certificates as SUSE Multi-Linux Manager builtin (self signed) certificates.

Depending on the choice then provide either path to signing CA certificate to generate a new certificate or path to an existing certificate and its key to be used as proxy certificate.

The CA certificates generated by the server are stored in the `/var/lib/containers/storage/volumes/root/_data/ssl-build` directory.

For more information about existing or custom certificates and the concept of corporate and intermediate certificates, see **Administration › Ssl-certs-imported**.

7. Click **[Generate]** to register a new proxy FQDN in the SUSE Multi-Linux Manager Server and generate a configuration archive (`config.tar.gz`) containing details for the container host.
8. After a few moments you are presented with file to download. Save this file locally.

3.2.4.6.2. Generate Proxy Configuration With `spacecmd` and Self-Signed Certificate

You can generate a Proxy configuration using `spacecmd`.

Procedure: Generating Proxy Configuration with `spacecmd` and Self-Signed Certificate

1. SSH into your container host.
2. Execute the following command replacing the Server and Proxy FQDN:

```
mgrctl exec -ti 'spacecmd proxy_container_config_generate_cert -- dev-pxy.example.com
dev-srv.example.com 2048 email@example.com -o /tmp/config.tar.gz'
```

3. Copy the generated configuration from the server container:

```
mgrctl cp server:/tmp/config.tar.gz .
```

3.2.4.6.3. Generate Proxy Configuration With `spacecmd` and Custom Certificate

You can generate a Proxy configuration using `spacecmd` for a custom certificates rather than the default self-signed certificates.

Procedure: Generating Proxy Configuration with spacecmd and Custom Certificate

1. SSH into your Server container host.
2. Execute the following command replacing the Server and Proxy FQDN:

```
for f in ca.crt proxy.crt proxy.key; do
  mgrctl cp $f server:/tmp/$f
done
mgrctl exec -ti 'spacecmd proxy_container_config -- -p 8022 pxy.example.com
srv.example.com 2048 email@example.com /tmp/ca.crt /tmp/proxy.crt /tmp/proxy.key -o
/tmp/config.tar.gz'
```

3. Copy the generated configuration from the server container:

```
mgrctl cp server:/tmp/config.tar.gz .
```

3.2.4.7. Transfer the Proxy Configuration

The Web UI generates a configuration archive. This archive needs to be made available on the proxy container host.

Procedure: Copying the Proxy Configuration

1. If not already done, copy the configuration archive (config.tar.gz) generated in the previous step from the server container to the server host:

```
mgrctl cp server:/root/config.tar.gz .
```

2. If not already done, copy the files from the server host to the proxy host:

```
scp config.tar.gz <proxy-FQDN>:/root
```

3. On the proxy host, install the Proxy with:

```
mgrpxy install podman config.tar.gz
```

3.2.4.8. Start the SUSE Multi-Linux Manager 5.1 Proxy

Container can now be started with the mgrpxy command:

Procedure: Start and Check Proxy Status

1. Start the Proxy by calling:

```
mgrpky start
```

2. Check container status by calling:

```
mgrpky status
```

Five SUSE Multi-Linux Manager Proxy containers should be present and should be part of the proxy-pod container pod:

- proxy-salt-broker
- proxy-httpd
- proxy-tftpd
- proxy-squid
- proxy-ssh

3.2.4.8.1. Using a Custom Container Image for a Service

By default, the SUSE Multi-Linux Manager Proxy suite is set to use the same image version and registry path for each of its services. However, it is possible to override the default values for a specific service using the install parameters ending with `-tag` and `-image`.

For example, use it like this:

```
mgrpky install podman --httpd-tag 0.1.0 --httpd-image registry.opensuse.org/uyuni/proxy-httpd /path/to/config.tar.gz
```

It adjusts the configuration file for the httpd service, where `registry.opensuse.org/uyuni/proxy-httpds` is the image to use and `0.1.0` is the version tag, before restarting it.

To reset the values to defaults, run the install command again without those parameters:

```
mgrpky install podman /path/to/config.tar.gz
```

This command first resets the configuration of all services to the global defaults and then reloads it.

3.2.5. SUSE Multi-Linux Manager 5.1 Proxy Deployment on K3s

3.2.5.1. Installing K3s



SUSE Multi-Linux Manager Proxy is supported on K3s running on top of SL Micro in a single node cluster. If you need to deploy it in any other Kubernetes environment, contact

support for evaluation.

On the container host machine, install K3s (replace <K3S_HOST_FQDN> with the FQDN of your K3s host):

```
curl -sfl https://get.k3s.io | INSTALL_K3S_EXEC="--tls-san=<K3S_HOST_FQDN>" sh -
```

3.2.5.2. Installing Tools

The installation requires the mgrpxy and helm packages.

The mgrpxy and helm packages are available in the SUSE Multi-Linux Manager Proxy product repositories.

1. To install it, run:

```
transactional-update pkg install helm mgrpxy
```

2. Reboot

3.2.5.2.1. Generate the Proxy Configuration with Web UI

Procedure: Generating a Proxy Container Configuration Using Web UI

1. In the Web UI, navigate to **Systems › Proxy Configuration** and fill the required data:
2. In the Proxy FQDN field type fully qualified domain name for the proxy.
3. In the Parent FQDN field type fully qualified domain name for the SUSE Multi-Linux Manager Server or another SUSE Multi-Linux Manager Proxy.
4. In the Proxy SSH port field type SSH port on which SSH service is listening on SUSE Multi-Linux Manager Proxy. Recommended is to keep default 8022.
5. In the Max Squid cache size [MB] field type maximal allowed size for Squid cache. Recommended is to use at most 80% of available storage for the containers.



2 GB represents the default proxy squid cache size. This will need to be adjusted for your environment.

6. In the SSL certificate selection list choose if new server certificate should be generated for SUSE Multi-Linux Manager Proxy or an existing one should be used. You can consider generated certificates as SUSE Multi-Linux Manager builtin (self signed) certificates.

Depending on the choice then provide either path to signing CA certificate to generate a new certificate or path to an existing certificate and its key to be used as proxy certificate.

The CA certificates generated by the server are stored in the `/var/lib/containers/storage/volumes/root/_data/ssl-build` directory.

For more information about existing or custom certificates and the concept of corporate and intermediate certificates, see **Administration › Ssl-certs-imported**.

7. Click **[Generate]** to register a new proxy FQDN in the SUSE Multi-Linux Manager Server and generate a configuration archive (`config.tar.gz`) containing details for the container host.
8. After a few moments you are presented with file to download. Save this file locally.

3.2.5.2.2. Generate Proxy Configuration With `spacecmd` and Self-Signed Certificate

You can generate a Proxy configuration using `spacecmd`.

Procedure: Generating Proxy Configuration with `spacecmd` and Self-Signed Certificate

1. SSH into your container host.
2. Execute the following command replacing the Server and Proxy FQDN:

```
mgrctl exec -ti 'spacecmd proxy_container_config_generate_cert -- dev-pxy.example.com
dev-srv.example.com 2048 email@example.com -o /tmp/config.tar.gz'
```

3. Copy the generated configuration from the server container:

```
mgrctl cp server:/tmp/config.tar.gz .
```

3.2.5.2.3. Generate Proxy Configuration With `spacecmd` and Custom Certificate

You can generate a Proxy configuration using `spacecmd` for a custom certificates rather than the default self-signed certificates.

Procedure: Generating Proxy Configuration with `spacecmd` and Custom Certificate

1. SSH into your Server container host.
2. Execute the following command replacing the Server and Proxy FQDN:

```
for f in ca.crt proxy.crt proxy.key; do
```

```
mgrctl cp $f server:/tmp/$f
done
mgrctl exec -ti 'spacecmd proxy_container_config -- -p 8022 pxy.example.com
srv.example.com 2048 email@example.com /tmp/ca.crt /tmp/proxy.crt /tmp/proxy.key -o
/tmp/config.tar.gz'
```

3. Copy the generated configuration from the server container:

```
mgrctl cp server:/tmp/config.tar.gz .
```

3.2.5.3. Deploying the SUSE Multi-Linux Manager Proxy Helm Chart

To configure the storage of the volumes to be used by the SUSE Multi-Linux Manager Proxy pod, define persistent volumes for the following claims. If you do not customize the storage configuration, K3s will automatically create the storage volumes for you.

The persistent volume claims are named:

- squid-cache-pv-claim
- package-cache-pv-claim
- tftp-boot-pv-claim

Create the configuration for the SUSE Multi-Linux Manager Proxy as documented in **Installation-and-upgrade › Container-deployment**. Copy the configuration tar.gz file and then install:

```
mgrpxy install kubernetes /path/to/config.tar.gz
```

For more information see <https://kubernetes.io/docs/concepts/storage/persistent-volumes/> (kubernetes) or <https://rancher.com/docs/k3s/latest/en/storage/> (K3s) documentation.

3.2.6. SUSE Multi-Linux Manager Proxy Air-gapped Deployment

3.2.6.1. What is air-gapped deployment?

Air-gapped deployment refers to the setup and operation of any networked system that is physically isolated from insecure networks, especially the internet. This type of deployment is commonly used in high-security environments such as military installations, financial systems, critical infrastructure, and anywhere sensitive data is handled and must be protected from external threats.



At the moment, air-gapped deployment is available only on SL Micro.

3.2.6.2. Deploy with Virtual Machine

The recommended installation method is using the provided SUSE Multi-Linux Manager Virtual Machine Image option, since all the needed tools and container images are pre-loaded and will work out of the box.

For more information about installing SUSE Multi-Linux Manager Proxy Virtual Machine, see [Deploy Proxy as a Virtual Machine](#).

To upgrade SUSE Multi-Linux Manager Proxy, users should follow the procedures defined in [Proxy Upgrade](#).

3.2.6.3. Deploy SUSE Multi-Linux Manager on SL Micro

SUSE Multi-Linux Manager also provides all the needed container images in RPM's that can be installed on the system.

Procedure: Install SUSE Multi-Linux Manager on SL Micro in Air-gapped

1. Install SL Micro.
2. Bootstrap the Proxy Host OS as a Client on SUSE Multi-Linux Manager Server.
3. Update the system.
4. Install tools packages and image packages (replace \$ARCH\$ with the correct architecture)

```
transactional-update pkg install mgrpxy* mgrctl* multi-linux-manager-5.1-$ARCH$-proxy-*
```

5. Reboot.
6. Deploy SUSE Multi-Linux Manager with mgrpxy.

For more detailed information about installing SUSE Multi-Linux Manager Proxy on SL Micro, see [Deploy Proxy as a Virtual Machine](#).

To upgrade SUSE Multi-Linux Manager Proxy, users should follow the procedures defined in [Proxy Upgrade](#).

Chapter 4. Upgrade and Migration

4.1. Server

4.1.1. Distribution Upgrade and Server Migration



- SUSE Multi-Linux Manager 5.0 must be stopped before upgrade.
- SUSE Multi-Linux Manager 5.0 is not supported on top of SL Micro 6.1 & SUSE Linux Enterprise Server 15 SP7 as host os

4.1.1.1. SLE Micro 5.5 to SL Micro 6.1

This document provides the tested procedure to upgrade a SLE Micro 5.5 host deployed with SUSE Multi-Linux Manager 5.0 Server to SL Micro 6.1 and migrate to SUSE Multi-Linux Manager 5.1.

4.1.1.1.1. Prerequisites

- SUSE Multi-Linux Manager 5.0 is installed and running on SLE Micro 5.5.
- System is registered and has active subscriptions with SCC.

4.1.1.1.2. Distribution Upgrade and Server Migration

Procedure: Migration from SUSE Multi-Linux Manager 5.0 to SUSE Multi-Linux Manager 5.1

1. Verify Current Product Status

```
SUSEConnect --status-text
```

Confirm:

- Base OS: SUSE Linux Enterprise Micro 5.5
- Extension: SUSE Manager Server 5.0 Extension

2. Ensure System is Updated

```
transactional-update patch
```

- If patches were applied, **reboot the system** before proceeding to migration:

```
reboot
```

- If no updates were found, you can proceed directly to the migration step.

3. Start the Migration:

```
transactional-update migration --auto-agree-with-licenses --gpg-auto-import  
-keys
```

Follow the prompts and select the available migration to **SUSE Linux Micro 6.1** and **SUSE Multi-Linux Manager Server Extension 5.1**.

4. Reboot to Apply Changes

```
reboot
```

5. Post-Reboot Checks:

Verify upgraded OS and SUSE Multi-Linux Manager extension:

```
cat /etc/os-release  
SUSEConnect --status-text
```

You should see:

- SL-Micro 6.1
 - Multi-Linux Manager Server Extension 5.1
- ### 6. Enable Root SSH Access (if required). SL Micro 6.1 disables root login via SSH by default. Edit `/etc/ssh/sshd_config.d/sshd.conf`:

```
PermitRootLogin yes
```

And restart the service:


```
systemctl restart sshd
```

For more information, see **Administration › Troubleshooting**.

7. Upgrade Server Containers

```
mgradm upgrade podman
```

Follow the prompts to pull and configure the new 5.1.0 containers.

8. Check running containers:

```
podman ps
```

You should see:

- server:5.1.0
- server-postgresql:5.1.0

9. Verify SUSE Multi-Linux Manager Tools

```
mgradm --version
```

Expected output:

- Version 5.1.11 or later
- References 5.1.0



- Errors for missing services like uyuni-db or saline during upgrade can be ignored if not installed previously.

4.1.1.1.3. Migration Complete

The system is now running SUSE Multi-Linux Manager 5.1 on SL Micro 6.1. Continue with post-migration validation.

4.1.1.2. SUSE Linux Enterprise Server 15 SP6 to 15 SP7

This document provides the tested procedure to upgrade a SUSE Linux Enterprise Server 15 SP6 host deployed with SUSE Multi-Linux Manager 5.0 Server to SUSE Linux Enterprise Server 15 SP7 with SUSE Multi-Linux Manager 5.1.

4.1.1.2.1. Prerequisites

- SUSE Multi-Linux Manager 5.0 is installed and running on SUSE Linux Enterprise Server 15 SP6.
- The system is registered and has valid subscriptions in SUSE Customer Center (SCC).
- Ensure backups are created before proceeding.

4.1.1.2.2. Distribution Upgrade and Server Migration

Procedure: Migration from SUSE Multi-Linux Manager 5.0 to SUSE Multi-Linux Manager 5.1

1. Verify Current Product Status

```
SUSEConnect --status-text
```

Confirm:

- Base OS: SUSE Linux Enterprise Server 15 SP6
- Extension: SUSE Manager Server 5.0 Extension

2. Apply All System Patches

```
zypper patch
```

Reboot if the update stack was updated:

```
reboot
```

3. Launch the Zypper migration tool

```
zypper migration
```

Zypper will show the possible migration targets with detailed summaries.

4. Select the appropriate target, and follow the prompts to complete the migration.
5. After the upgrade completes, reboot the system:

```
reboot
```

6. Post-Reboot: Verify Upgrade Status

```
cat /etc/os-release  
SUSEConnect --status-text
```

Expected output:

- VERSION="15-SP7"
- SUSE Multi-Linux Manager Server Extension 5.1 is active

7. Upgrade Server Containers

```
mgradm upgrade podman
```

Follow prompts to pull the new container images and reconfigure the environment.

8. Check Running Containers

```
podman ps
```

Expected containers:

- server:5.1.0
- server-postgresql:5.1.0

9. Verify SUSE Multi-Linux Manager Tools Version

```
mgradm --version
```

Expected output:

- Version 5.1.11 or later
- Image tag 5.1.0

4.1.1.2.3. Migration Complete

The system is now successfully upgraded to SUSE Linux Enterprise Server 15 SP7 and SUSE Multi-Linux Manager 5.1. Validate your setup before resuming production operations.

SUSE Multi-Linux Manager 5.1 introduces a rebranded set of client tools for all supported operating systems. This transition is seamless, and users performing a new product synchronization should only notice the updated channel names.

Channels named SUSE Manager Client Tools for XYZ, used by clients previously registered with SUSE Multi-Linux Manager 4.3 or 5.0, are no longer available in version 5.1 and will no longer receive updates in 5.1.



Although the legacy channels remain assigned to existing clients after migration, the corresponding repositories have been removed.

To ensure continued updates, users must:

- Mirror the new SUSE Multi-Linux Manager Client Tools for XYZ channels for the relevant products and assign them to the appropriate clients.
- Unassign the outdated SUSE Manager Client Tools for XYZ channels.

This also means that any CLM projects based on the old client tools must be adjusted accordingly.

4.1.2. SUSE Multi-Linux Manager Server Migration to a Containerized Environment

4.1.2.1. Requirements and Considerations

4.1.2.1.1. General

- To migrate a SUSE Multi-Linux Manager 4.3 Server to a container, you require a new machine with SL Micro 6.1 or SUSE Linux Enterprise Server 15 SP7 and mgradm installed.
- An in-place migration from SUSE Multi-Linux Manager 4.3 to 5.1 is not supported, regardless of whether the chosen host operating system is SL Micro 6.1 or SUSE Linux Enterprise Server 15 SP7.

- Before migrating from SUSE Multi-Linux Manager 4.3 to 5.1, any existing traditional clients including the traditional proxies must be migrated to Salt. For more information about migrating traditional SUSE Multi-Linux Manager 4.3 clients to Salt clients, see <https://documentation.suse.com/suma/4.3/en/suse-manager/client-configuration/contact-methods-migrate-traditional.html>.
- Traditional contact protocol is no longer supported in SUSE Multi-Linux Manager 5.0 and later.



This guide only covers the migration from SUSE Multi-Linux Manager 4.3 to 5.1. Migrating an existing SUSE Multi-Linux Manager 5.1 instance to the same version while switching the host operating system from SL Micro 6.1 to SUSE Linux Enterprise Server 15 SP7, or vice versa, is not handled by the `mgradm migrate` command.

4.1.2.1.2. Hostnames

- The current migration procedure does not include functionality for renaming hostnames. As a result, the fully qualified domain name (FQDN) of the new server will remain the same as that of the old server.
- The IP address must remain unchanged to ensure that the clients can contact the server.



After the migration, it will be necessary to manually update the DHCP and DNS records to point to the new server.

4.1.2.1.3. GPG Keys

- Self trusted GPG keys are not migrated.
- GPG keys that are trusted in the RPM database only are not migrated. Thus synchronizing channels with `spacewalk-repo-sync` can fail.
- The administrator must migrate these keys manually from the 4.3 installation to the container host after the actual server migration.

Procedure: Manual Migration of the 4.3 GPG Keys to New Server

1. Copy the keys from the 4.3 server to the container host of the new server.
2. Later, add each key to the migrated server with the command `mgradm gpg add <PATH_TO_KEY_FILE>`.

4.1.2.2. Migration

4.1.2.2.1. Prepare SUSE Multi-Linux Manager 5.1 Server Host



Do not pre-install SUSE Multi-Linux Manager on the prepared SL Micro 6.1 or SUSE Linux Enterprise Server 15 SP7 system.

The migration process is designed to perform the server installation automatically. Running `mgradm install` and then `mgradm migrate` is not supported and will lead to an unsupported system state.

In the following steps, we are only preparing the host system, not installing the actual SUSE Multi-Linux Manager 5.1 Server.

Prepare SL Micro 6.1 Host

Download the installation media

Procedure: Downloading the Installation Media

1. Locate the SL Micro 6.1 installation media at <https://www.suse.com/download/sle-micro/>, and download the appropriate media file.
2. Prepare a DVD or USB flash drive with the downloaded .iso image for installation.

Install SL Micro 6.1

For more information about preparing your machines (virtual or physical), see the [SL Micro Deployment Guide](#).

Procedure: Installing SL Micro 6.1

1. Insert the DVD or USB flash drive (USB disk or key) containing the installation image for SLE Micro 6.1.
2. Boot or reboot your system.
3. Use the arrow keys to select Installation.
4. Adjust Keyboard and language.
5. Click the checkbox to accept the license agreement.
6. Click Next to continue.
7. Select the registration method. For this example, we will register the server with SUSE Customer Center.



The SUSE Multi-Linux Manager 5.1 containers are installed as extensions. Depending on the specific extension needed from the list below, additional SUSE Customer Center registration codes will be required for each.

- SUSE Multi-Linux Manager 5.1 Server
- SUSE Multi-Linux Manager 5.1 Proxy
- SUSE Multi-Linux Manager 5.1 Retail Branch Server



The SL Micro 6.1 entitlement is included within the SUSE Multi-Linux Manager

entitlement, so it does not require a separate registration code.

8. Enter your SUSE Customer Center email address.
9. Enter your registration code for SL Micro 6.1.
10. Click **Next** to continue.
11. To install a proxy, select the SUSE Multi-Linux Manager 5.1 Proxy extension; to install a server, select the SUSE Multi-Linux Manager 5.1 Server extension Checkbox.
12. Click **Next** to continue.
13. Enter your SUSE Multi-Linux Manager 5.1 extension registration code.
14. Click **[Next]** to continue.
15. On the NTP Configuration page click **[Next]**.
16. On the Authentication for the System page enter a password for the root user. Click **[Next]**.
17. On the Installation Settings page click **[Install]**.

This concludes installation of SL Micro 6.1 and SUSE Multi-Linux Manager 5.1 as an extension.

OPTIONAL: Registration from the command line

If you added SUSE Multi-Linux Manager 5.1 as an extension during SL Micro 6.1 installation then you can skip this procedure. However, optionally you may skip registration during SL Micro 6.1 installation by selecting the **[Skip Registration]** button. This section provides steps on registering your products after SL Micro 6.1 installation.



The following steps register a SUSE Multi-Linux Manager 5.1 extension with the x86-64 architecture and thus require a registration code for the x86-64 architecture. To register ARM or s390x architectures use the correct registration code.

Procedure: Registering from the Command Line

1. List available extensions with the following command:

```
transactional-update --quiet register --list-extensions
```

2. From the list of available extensions, select the one you wish to install:
 - a. If installing the Server, use your SUSE Multi-Linux Manager Server Extension 5.1 x86_64 registration code with following command:

```
transactional-update register -p Multi-Linux-Manager-Server/5.1/x86_64 -r  
<reg_code>
```

- b. If installing the Proxy, use your SUSE Multi-Linux Manager Proxy Extension 5.1 x86_64 registration code with following command:

```
transactional-update register -p Multi-Linux-Manager-Proxy/5.1/x86_64 -r
<reg_code>
```

3. Reboot.

Update the system

Procedure: Updating the System

1. Log in as **root**.
2. Run **transactional-update**:

```
transactional-update
```

3. Reboot.



SL Micro is designed to update itself automatically by default and will reboot after applying updates. However, this behavior is not desirable for the SUSE Multi-Linux Manager environment. To prevent automatic updates on your server, SUSE Multi-Linux Manager disables the transactional-update timer during the bootstrap process.

If you prefer the SL Micro default behavior, enable the timer by running the following command:

```
systemctl enable --now transactional-update.timer
```

Prepare SUSE Linux Enterprise Server 15 SP7 Host

Alternatively, you can deploy SUSE Multi-Linux Manager on SUSE Linux Enterprise Server 15 SP7.

The following procedure describes the main steps of the installation process.

Procedure: Installing SUSE Multi-Linux Manager Extensions on SUSE Linux Enterprise Server 15 SP7

1. Locate and download SUSE Linux Enterprise Server 15 SP7 .iso at <https://www.suse.com/download/sles/>.
2. Make sure that you have registration codes both for the host operating system (SUSE Linux Enterprise Server 15 SP7) and extensions

3. Start the installation of SUSE Linux Enterprise Server 15 SP7.
 - a. On the Language, keyboard and product selection select the product to install.
 - b. On the License agreement read the agreement and check I Agree to the License Terms.
4. Select the registration method. For this example, we will register the server with SUSE Customer Center.
5. Enter your SUSE Customer Center email address.
6. Enter your registration code for SUSE Linux Enterprise Server 15 SP7.
7. Click Next to continue.



Please note that for SUSE Linux Enterprise Server 15 SP7, you are required to have a valid SUSE Linux Enterprise Server subscription and corresponding registration code, which you must provide on this screen. You will be required to enter the SUSE Multi-Linux Manager Extension registration code below.

8. In the screen Extensions and Modules Selection check the following:
 - Select the SUSE Multi-Linux Manager Server Extension to install the Server, or the SUSE Multi-Linux Manager Proxy Extension to install the Proxy.
 - Basesystem Module
 - Containers Module
9. Click Next to continue.
10. Enter your SUSE Multi-Linux Manager 5.1 extension registration code.
11. Click **[Next]** to continue.
12. Complete the installation.
13. When the installation completes, log in to the newly installed server as root.
14. Update the System (optional, if the system was not set to download updates during install):

```
zypper up
```

15. Reboot.
16. Log in as root and install podman plus mgradm and mgradm-bash-completion (if not already automatically installed):

```
zypper install podman mgradm mgradm-bash-completion
```

17. Start the Podman service by rebooting the system, or running a command:

```
systemctl enable --now podman.service
```

4.1.2.2.2. SSH Connection Preparation

This step ensures that the new SUSE Multi-Linux Manager 5.1 Server can connect to the existing 4.3 Server over SSH without requiring a password. It involves generating and configuring SSH keys, setting up an SSH agent, and copying the public key to the old server. This setup is required for the migration process to run without manual intervention.

Procedure: Preparing the SSH Connection

1. Ensure that for root an SSH key exists on the new 5.1 server. If a key does not exist, create it with:

```
ssh-keygen -t rsa
```

2. The SSH configuration and agent should be ready on the new server for a connection to the 4.3 server that does not prompt for a password.

```
eval $(ssh-agent); ssh-add
```



To establish a connection that does not prompt for a password, the migration script relies on an SSH agent running on the new server. If the agent is not active yet, initiate it by running `eval $(ssh-agent)`. Then add the SSH key to the running agent with `ssh-add` followed by the path to the private key. You will be prompted to enter the password for the private key during this process.

3. Copy the public SSH key to the SUSE Multi-Linux Manager 4.3 Server (<oldserver.fqdn>) with `ssh-copy-id`. Replace <oldserver.fqdn> with the FQDN of the 4.3 server:

```
ssh-copy-id <old server.fqdn>
```

The SSH key will be copied into the old server's `~/.ssh/authorized_keys` file. For more information, see the `ssh-copy-id` manpage.

4. Establish an SSH connection from the new server to the old SUSE Multi-Linux Manager Server to check that no password is needed. Also there must not be any problem with the host fingerprint. In case of trouble, remove old fingerprints from the `~/.ssh/known_hosts` file. Then try again. The fingerprint will be stored in the local `~/.ssh/known_hosts` file.

4.1.2.2.3. Perform the Migration

When planning your migration from SUSE Multi-Linux Manager 4.3 to SUSE Multi-Linux Manager 5.1, ensure

that your target instance meets or exceeds the specifications of the old setup.

This includes, but is not limited to, memory (RAM), CPU Cores, Storage, and Network Bandwidth.

Procedure: Performing the Migration

1. This step is optional. If custom persistent storage is required for your infrastructure, use the `mgr-storage-server` tool. For more information about `mgr-storage-server`, see [installation-and-upgrade:hardware-requirements.pdf](#).
2. Execute the following command to install a new SUSE Multi-Linux Manager server. Replace `<oldserver.fqdn>` with the FQDN of the 4.3 server:



Make sure to upgrade your 4.3 server and apply all available updates before starting the migration process. Additionally, remove any unnecessary channels to help reduce the overall migration time.



The migration can take a very long time depending on the amount of data that needs to be replicated. To reduce downtime it is possible to run the migration multiple times in a process of initial replication, re-replication, or final replication and switch over while all the services on the old server can stay up and running.

Only during the final migration the processes on the old server need to be stopped.

For all non-final replications add the parameter `--prepare` to prevent the automatic stopping the services on the old server. For example on SUSE Multi-Linux Manager server:

```
mgradm migrate podman <oldserver.fqdn> --prepare
```

Procedure: Final Migration

1. Stop the SUSE Multi-Linux Manager services on 4.3 Server:

```
spacewalk-service stop
```

2. Stop the PostgreSQL service on 4.3 Server:

```
systemctl stop postgresql
```

3. Perform the migration on SUSE Multi-Linux Manager server

```
mgradm migrate podman <oldserver.fqdn>
```

4. Migrate trusted SSL CA certificates.

Migration of the Certificates

Trusted SSL CA certificates that were installed as part of an RPM and stored on SUSE Multi-Linux Manager 4.3 in the `/usr/share/pki/trust/anchors/` directory will not be migrated. Because SUSE does not install RPM packages in the container, the administrator must migrate these certificate files manually from the 4.3 installation after the migration.

Procedure: Migrating the Certificates

1. Copy the file from the 4.3 server to the new server. For example, as `/local/ca.file`.
2. Copy the file into the container with:

```
mgrctl cp /local/ca.file server:/etc/pki/trust/anchors/
```



After successfully running the `mgradm migrate` command, the Salt setup on all clients will still point to the old 4.3 server.

To redirect them to the 5.1 server, it is required to rename the new server at the infrastructure level (DHCP and DNS) to use the same FQDN and IP address as 4.3 server.

Adjusting the IP address can be avoided if the latest version of the minion is installed on the clients, as the newer version can automatically re-connect with the server using only the FQDN.

SUSE Multi-Linux Manager 5.1 introduces a rebranded set of client tools for all supported operating systems. This transition is seamless, and users performing a new product synchronization should only notice the updated channel names.

Channels named SUSE Manager Client Tools for XYZ, used by clients previously registered with SUSE Multi-Linux Manager 4.3 or 5.0, are no longer available in version 5.1 and will no longer receive updates in 5.1.



Although the legacy channels remain assigned to existing clients after migration, the corresponding repositories have been removed.

To ensure continued updates, users must:

- Mirror the new SUSE Multi-Linux Manager Client Tools for XYZ channels for the relevant products and assign them to the appropriate clients.
- Unassign the outdated SUSE Manager Client Tools for XYZ channels.

This also means that any CLM projects based on the old client tools must be adjusted

accordingly.

4.1.3. SUSE Multi-Linux Manager Server Upgrade

Before running the upgrade command, it is recommended to update the host operating system. Updating the host operating system will also result in the update of the SUSE Multi-Linux Manager tooling such as the mgradm tool.

Procedure: Upgrading SUSE Multi-Linux Manager Server

1. Refresh software repositories with zypper:

```
zypper ref
```

2. Depending on the host operating system, proceed with these steps:

For a transactional system such as SL Micro:

1. Apply available updates with transactional-update:

```
transactional-update
```

2. If updates were applied, reboot.

For SUSE Linux Enterprise Server:

Update installed software with zypper:

```
zypper up
```

3. The SUSE Multi-Linux Manager Server container can be updated using the following command:

```
mgradm upgrade podman
```

This command will bring the status of the container up-to-date and restart the server.

Upgrading to specific version



If you do not specify the tag parameter, it will default to upgrading to the most recent version. To upgrade to a specific version, provide the tag parameter with the desired image tag.

For more information on the upgrade command and its parameters, use the following command:

```
mgradm upgrade podman -h
```

For air-gapped installations, first upgrade the container RPM packages, then run the `mgradm` command.

4.2. Proxy

4.2.1. Proxy Migration

4.2.1.1. Introduction

This document provides the tested and validated procedures for migrating both the **host operating system** and the **proxy extension** in environments managed by **SUSE Multi-Linux Manager**, specifically targeting systems deployed with **SUSE Multi-Linux Manager Proxy 5.0**.

The upgrade scenarios covered include:

- Migrating from **SUSE Linux Enterprise Micro (SLE Micro) 5.5** to **SLE Micro 6.1**
- Migrating from **SUSE Linux Enterprise Server (SLES) 15 SP6** to **SLES 15 SP7**
- Upgrading the **SUSE Multi-Linux Manager Proxy Extension** from **version 5.0** to **version 5.1**

4.2.1.2. SLE Micro 5.5 to SL Micro 6.1

This section provides the tested procedure to upgrade a SLE Micro 5.5 host deployed with SUSE Multi-Linux Manager 5.0 Proxy to SL Micro 6.1 with SUSE Multi-Linux Manager 5.1 Proxy.

4.2.1.2.1. Prerequisites

- SUSE Multi-Linux Manager 5.0 Proxy is installed and running on SLE Micro 5.5.
- Proxy system is registered with the SUSE Multi-Linux Manager Server.

4.2.1.2.2. Distribution Upgrade and Proxy Migration

Procedure: Migrate SUSE Multi-Linux Manager 5.0 Proxy to SUSE Multi-Linux Manager 5.1

1. Verify System and Proxy Version

```
cat /etc/os-release  
mgrpxy --version
```

Confirm:

- Operating System: SLE Micro 5.5
- Proxy Component: mgrpxy version 0.1.29 or higher

2. Check Running Containers

```
podman ps
```

Ensure the following containers are running:

- proxy-squid
- proxy-ssh
- proxy-httpd
- proxy-tftpd
- proxy-salt-broker

3. Synchronize Proxy Products in SUSE Multi-Linux Manager Server

Use the Web UI to synchronize:

- SL-Micro 6.1
- SUSE Multi-Linux Manager 5.1 Proxy Extension

4. Perform Proxy Product Migration

Use the Web UI to migrate from:

- SLE Micro 5.5 + SUSE Multi-Linux Manager Proxy 5.0 Extension to
- SL Micro 6.1 + SUSE Multi-Linux Manager Proxy 5.1 Extension



Do not select optional channels when prompted, unless you have confirmed they are required.

5. Monitor the Migration Action

6. Reboot the System

```
reboot
```

7. Post-Reboot Validation

```
cat /etc/os-release
mgrpxy --version
```

Expected:

- OS: SL Micro 6.1
- Updated Proxy version

8. Enable Root SSH Access (if required). SL Micro 6.1 disables root login via SSH by default. Edit `/etc/ssh/sshd_config.d/sshd.conf`:

```
PermitRootLogin yes
```

And restart the service:

```
systemctl restart sshd
```

For more information, see **Administration › Troubleshooting**.

9. Upgrade proxy containers:

```
mgrpxy upgrade podman
```

10. Validate Proxy Containers

```
podman ps
```

All expected proxy containers should be up and running.



- If migration fails due to missing GPG keys (e.g. key ID 09D9EA69), refer to Bug 1243373.
- Also check for issues like missing libraries (liblua5.3.so.5) as reported in Bug 1243457.

4.2.1.2.3. Migration Complete

The proxy host system is now running SL Micro 6.1 with updated SUSE Multi-Linux Manager 5.1 Proxy packages and synchronized product channels.

4.2.1.3. SUSE Linux Enterprise Server 15 SP6 to 15 SP7

This section provides the tested procedure to upgrade a SUSE Linux Enterprise Server SP7 host deployed with SUSE Multi-Linux Manager 5.0 Proxy to SUSE Linux Enterprise Server SP7 with SUSE Multi-Linux Manager 5.1 Proxy.

4.2.1.3.1. Prerequisites

- SUSE Multi-Linux Manager Proxy 5.0 is installed and running on SUSE Linux Enterprise Server 15 SP6.
- Proxy system is registered with the SUSE Multi-Linux Manager Server.

4.2.1.3.2. Distribution Upgrade and Proxy Migration

Procedure: Update SUSE Multi-Linux Manager Proxy Components on SUSE Linux Enterprise Server 15 SP6

1. Verify Operating System and Proxy Version

```
cat /etc/os-release  
mgrpxy --version
```

Expected Output:

```
NAME="SLES"  
VERSION="15-SP6"  
VERSION_ID="15.6"  
PRETTY_NAME="SUSE Linux Enterprise Server 15 SP6"  
ID="sles"  
ID_LIKE="suse"
```

and

```
mgrpxy version 0.1.29 (HEAD 053c629)
```

2. List Running Proxy Containers

```
podman ps
```

Verify the following containers are running:

- proxy-salt-broker
- proxy-httpd
- proxy-squid
- proxy-tftpd
- proxy-ssh
- Supporting infrastructure container(s)

3. Synchronize Products on the SUSE Multi-Linux Manager Server

Using the Web UI, synchronize the following:

- SUSE Linux Enterprise Server 15 SP6
- SUSE Multi-Linux Manager Proxy Extension 5.0

4. Trigger the Product Migration via Web UI

Navigate to the proxy system in the SUSE Multi-Linux Manager Web UI and select:

- **Migrate from:** SLES 15 SP6 + Manager Proxy Extension 5.0
- **To:** SLES 15 SP7 + Manager Proxy Extension (updated channels)



When prompted, **do not select** optional channels unless you have confirmed they are required.

5. Monitor the Migration Job

Check job status under the system action history in the Web UI.

6. Reboot the Proxy System

```
reboot
```

7. Validate Post-Reboot Status

```
cat /etc/os-release  
mgrpxy --version
```

Expected:

- OS: SUSE Linux Enterprise Server 15 SP7
- Updated mgrpxy version (e.g., 5.1.9)

8. Update proxy containers:

```
mgrpxy upgrade podman
```

9. Confirm Proxy Containers Are Operational

```
podman ps
```

Ensure all relevant proxy containers are up:

- proxy-salt-broker
- proxy-httpd
- proxy-squid
- proxy-tftpd
- proxy-ssh

4.2.1.3.3. Migration Complete

The proxy host system is now running SUSE Linux Enterprise Server 15 SP7 with updated SUSE Multi-Linux Manager 5.1 Proxy packages and synchronized product channels.

4.2.2. Proxy Migration

In SUSE Multi-Linux Manager 4.3, the proxy can be deployed using three different methods: RPM based, containerized running on podman or k3s.

In SUSE Multi-Linux Manager 5.1, management of the containerized proxy running with podman was re-

designed and made simpler with the `mgrpky` tool. At the same time, RPM based support was removed, and only the containerized version running with podman or k3s is supported.

This section describes migrating from Proxy 4.3 using the `mgrpky` tool.



An in-place migration from SUSE Multi-Linux Manager 4.3 to 5.1 is unsupported. The host operating system has changed from SUSE Linux Enterprise Server 15 SP4 to SL Micro 6.1 or SUSE Linux Enterprise Server 15 SP7.

The traditional contact protocol is no longer supported in SUSE Multi-Linux Manager 5.0 and later. Before migrating from SUSE Multi-Linux Manager 4.3 to 5.1, any existing traditional clients including the traditional proxies must be migrated to Salt.

For more information about migrating to Salt clients, see <https://documentation.suse.com/suma/4.3/en/suse-manager/client-configuration/contact-methods-migrate-traditional.html>

4.2.2.1. Deploy a New SUSE Multi-Linux Manager Proxy

Because in-place migration is not supported, the users must deploy a new SUSE Multi-Linux Manager proxy with a new FQDN.

For more information about installing SUSE Multi-Linux Manager Proxy, see **Installation-and-upgrade › Install-proxy**.

4.2.2.2. Migrate Clients to the New Proxy



Before migrating the clients, ensure that the new proxy is already deployed and fully functional.

Procedure: Migrating Client Between Proxies

1. Log in to the SUSE Multi-Linux Manager Server Web UI.
2. From the left navigation, select **Systems › Systems List**.
3. Navigate to the old 4.3 proxy page, and click the Proxy tab.
4. Select all systems to "SSM".
5. From the left navigation, select **Systems › System Set Manager**.
6. Select the sub-menu **Misc › Proxy**.
7. From the drop-down select the new proxy to migrate to.

8. Click **[Change Proxy]**.

All selected clients will now be migrated to the new proxy. You can check the schedule progress to verify if all clients were successfully migrated.

After a few minutes, the clients will start to show up the new connection path. When all clients have the connection path under the new proxy, the old 4.3 proxy system is not needed anymore and can be removed.

4.2.2.3. TFTP files synchronization

Containerized proxies do not use tftpsync mechanism to transfer tftproot files. Instead these files are transparently downloaded and cached on demand.

To prevent false positive errors during cobbler sync run, migrated 4.3 proxies need to be removed from tftpsync mechanism.

If you previously configured a 4.3 proxy to receive TFTP files, one of the following configuration option is required:

- In the server container, run `configure-tftpsync.sh` with the list of remaining 4.3 proxies as arguments. If no 4.3 proxies remain, run `configure-tftpsync.sh` with no arguments.
- In the server container, manually remove the relevant proxy from the proxies setting in the `/etc/cobbler/settings.yaml` file. If there are no 4.3 proxies remaining, then manually remove the proxies list completely.

4.2.3. SUSE Multi-Linux Manager Proxy Upgrade

Before running the upgrade command, it is recommended to update the host operating system. Updating the host operating system will also result in the update of the SUSE Multi-Linux Manager tooling such as the `mgrpxy` tool.

Procedure: Upgrading SUSE Multi-Linux Manager Proxy

1. Refresh software repositories with `zypper`:

```
zypper ref
```

2. Depending on the host operating system, proceed with these steps:

For a transactional system such as SL Micro:

1. Apply available updates with `transactional-update`:

```
transactional-update
```

2. If updates were applied, reboot.

For SUSE Linux Enterprise Server:

Update installed software with zypper:

```
zypper up
```

3. The SUSE Multi-Linux Manager Proxy containers running on podman can be updated using the following command:

```
mgrpky upgrade podman
```

Or, those running on a Kubernetes cluster can update using:

```
mgrpky upgrade kubernetes
```



If you do not specify the tag parameter when upgrading to specific version, it will default to upgrading to the most recent version. To upgrade to a specific version, provide the tag parameter with the desired image tag.



While there is an option to upgrade a specific container using its specific tag, this feature is intended for applying PTFs only.

We highly recommend using the same tag for all proxy containers to ensure consistency under normal circumstances.

For air-gapped installations, first upgrade the container RPM packages, then run the `mgrpky upgrade podman` command.

4.3. Clients

4.3.1. Upgrade Clients

Clients use the versioning system of their underlying operating system. For clients using SUSE operating systems, you can perform upgrades within the SUSE Multi-Linux Manager Web UI.

For more information about upgrading clients, see **Client-configuration** › **Client-upgrades**.

Chapter 5. Basic Server and Proxy Management

5.1. Custom YAML Configuration and Deployment with mgradm

You have the option to create a custom mgradm.yaml file, which the mgradm tool can utilize during deployment.



mgradm will prompt for basic variables if they are not provided using command line parameters or the mgradm.yaml configuration file.

For security, **using command line parameters to specify passwords should be avoided.**

Use a configuration file with proper permissions instead.

Procedure: Deploying the SUSE Multi-Linux Manager Container with Podman Using a Custom Configuration File

1. Prepare a configuration file named mgradm.yaml similar to the following example:

```
# Database password. Randomly generated by default
db:
  password: MySuperSecretDBPass

# Password for the CA certificate
ssl:
  password: MySuperSecretSSLPassword

# Your SUSE Customer Center credentials
scc:
  user: ccUsername
  password: ccPassword

# Organization name
organization: YourOrganization

# Email address sending the notifications
emailFrom: notifications@example.com

# Administrators account details
admin:
  password: MySuperSecretAdminPass
  login: LoginName
  firstName: Admin
  lastName: Admin
  email: email@example.com
```

2. From the terminal, as root, run the following command. Entering your server's FQDN is optional.

```
mgradm -c mgradm.yaml install podman <FQDN>
```



You must deploy the container as sudo or root. The following error will be displayed on the terminal if you miss this step.

```

INF Setting up uyuni network
9:58AM INF Enabling system service
9:58AM FTL Failed to open /etc/systemd/system/uyuni-server.service
for writing error="open /etc/systemd/system/uyuni-server.service:
permission denied"

```

3. Wait for deployment to complete.
4. Open a browser and proceed to your server's FQDN or IP address.

5.2. Starting and Stopping Containers

The SUSE Multi-Linux Manager 5.1 Server container can be restarted, started, and stopped using the following commands:

To restart the SUSE Multi-Linux Manager 5.1 Server execute the following command:

```

# mgradm restart
5:23PM INF Welcome to mgradm
5:23PM INF Executing command: restart

```

To start the server execute the following command:

```

# mgradm start
5:21PM INF Welcome to mgradm
5:21PM INF Executing command: start

```

To stop the server execute the following command:

```

# mgradm stop
5:21PM INF Welcome to mgradm
5:21PM INF Executing command: stop

```

5.3. Containers used by SUSE Multi-Linux Manager

Below is a list of containers used by SUSE Multi-Linux Manager 5.1.

Table 14. Server Containers

Container Name	Description
uyuni-server	Main product container
uyuni-db	Database container for the product
uyuni-hub-xmlrpc	XML-RPC gateway for Hub deployment

Container Name	Description
uyuni-server-attestation	Server COCO attestation
uyuni-saline	Saline container for Salt observability
uyuni-server-migration	Migration helper container

Table 15. Proxy Containers

Container Name	Description
uyuni-proxy-httpd	Main proxy container handling all HTTP communication
uyuni-proxy-squid	Squid cache
uyuni-proxy-salt-broker	Salt forwarder
uyuni-proxy-ssh	SSH forwarder
uyuni-proxy-tftpd	TFTPD to HTTP translator and forwarder

5.4. Persistent Container Volumes

Modifications performed within containers are not retained. Any alterations made outside of persistent volumes will be discarded. Below is a list of persistent volumes for SUSE Multi-Linux Manager 5.1.

To customize the default volume locations, ensure you create the necessary volumes before launching the pod for the first time, utilizing the podman volume create command.



Ensure that this table aligns precisely with the volumes mapping outlined in both the Helm chart and the systemctl services definitions.

5.4.1. Server

The following volumes are stored under the **Podman** default storage location on the server.

Table 16. Persistent Volumes: Podman Default Storage

Volume Name	Volume Directory
Podman Storage	/var/lib/containers/storage/volumes/

Table 17. Persistent Volumes: root

Volume Name	Volume Directory
root	/root

Table 18. Persistent Volumes: var/

Volume Name	Volume Directory
var-cobbler	/var/lib/cobbler
var-salt	/var/lib/salt
var-pgsql	/var/lib/pgsql
var-cache	/var/cache
var-spacewalk	/var/spacewalk
var-log	/var/log

Table 19. Persistent Volumes: srv/

Volume Name	Volume Directory
srv-salt	/srv/salt
srv-www	/srv/www/
srv-tftpboot	/srv/tftpboot
srv-formulametadata	/srv/formula_metadata
srv-pillar	/srv/pillar
srv-susemanager	/srv/susemanager
srv-spacewalk	/srv/spacewalk

Table 20. Persistent Volumes: etc/

Volume Name	Volume Directory
etc-apache2	/etc/apache2
etc-rhn	/etc/rhn
etc-systemd-multi	/etc/systemd/system/multi-user.target.wants
etc-systemd-sockets	/etc/systemd/system/sockets.target.wants

Volume Name	Volume Directory
etc-salt	/etc/salt
etc-sssd	/etc/sssd
etc-tomcat	/etc/tomcat
etc-cobbler	/etc/cobbler
etc-sysconfig	/etc/sysconfig
etc-tls	/etc/pki/tls
etc-postfix	/etc/postfix
ca-cert	/etc/pki/trust/anchors

5.4.2. Proxy

The following volumes are stored under the **Podman** default storage location on the proxy.

Table 21. Persistent Volumes: Podman Default Storage

Volume Name	Volume Directory
Podman Storage	/var/lib/containers/storage/volumes/

Table 22. Persistent Volumes: srv/

Volume Name	Volume Directory
uyuni-proxy-tftpboot	/srv/tftpboot

Table 23. Persistent Volumes: var/

Volume Name	Volume Directory
uyuni-proxy-rhn-cache	/var/cache/rhn
uyuni-proxy-squid-cache	/var/cache/squid

5.5. Persistent Container Volumes

Modifications performed within containers are not retained. Any alterations made outside of persistent volumes will be discarded. Below is a list of persistent volumes for SUSE Multi-Linux Manager 5.1.

To customize the default volume locations, ensure you create the necessary volumes before launching the pod for the first time, utilizing the `podman volume create` command.



Ensure that this table aligns precisely with the volumes mapping outlined in both the Helm chart and the `systemctl` services definitions.

5.5.1. Server

The following volumes are stored under the **Podman** default storage location on the server.

Table 24. Persistent Volumes: Podman Default Storage

Volume Name	Volume Directory
Podman Storage	<code>/var/lib/containers/storage/volumes/</code>

Table 25. Persistent Volumes: root

Volume Name	Volume Directory
root	<code>/root</code>

Table 26. Persistent Volumes: var/

Volume Name	Volume Directory
var-cobbler	<code>/var/lib/cobbler</code>
var-salt	<code>/var/lib/salt</code>
var-pgsql	<code>/var/lib/pgsql</code>
var-cache	<code>/var/cache</code>
var-spacewalk	<code>/var/spacewalk</code>
var-log	<code>/var/log</code>

Table 27. Persistent Volumes: srv/

Volume Name	Volume Directory
srv-salt	<code>/srv/salt</code>
srv-www	<code>/srv/www/</code>
srv-tftpboot	<code>/srv/tftpboot</code>

Volume Name	Volume Directory
srv-formulametadata	/srv/formula_metadata
srv-pillar	/srv/pillar
srv-susemanager	/srv/susemanager
srv-spacewalk	/srv/spacewalk

Table 28. Persistent Volumes: etc/

Volume Name	Volume Directory
etc-apache2	/etc/apache2
etc-rhn	/etc/rhn
etc-systemd-multi	/etc/systemd/system/multi-user.target.wants
etc-systemd-sockets	/etc/systemd/system/sockets.target.wants
etc-salt	/etc/salt
etc-sssd	/etc/sssd
etc-tomcat	/etc/tomcat
etc-cobbler	/etc/cobbler
etc-sysconfig	/etc/sysconfig
etc-tls	/etc/pki/tls
etc-postfix	/etc/postfix
ca-cert	/etc/pki/trust/anchors

5.5.2. Proxy

The following volumes are stored under the **Podman** default storage location on the proxy.

Table 29. Persistent Volumes: Podman Default Storage

Volume Name	Volume Directory
Podman Storage	/var/lib/containers/storage/volumes/

Table 30. Persistent Volumes: srv/

Volume Name	Volume Directory
uyuni-proxy-tftpboot	/srv/tftpboot

Table 31. Persistent Volumes: var/

Volume Name	Volume Directory
uyuni-proxy-rhn-cache	/var/cache/rhn
uyuni-proxy-squid-cache	/var/cache/squid

Chapter 6. GNU Free Documentation License

Copyright © 2000, 2001, 2002 Free Software Foundation, Inc. 51 Franklin St, Fifth Floor, Boston, MA 02110-1301 USA. Everyone is permitted to copy and distribute verbatim copies of this license document, but changing it is not allowed.

0. PREAMBLE

The purpose of this License is to make a manual, textbook, or other functional and useful document "free" in the sense of freedom: to assure everyone the effective freedom to copy and redistribute it, with or without modifying it, either commercially or noncommercially. Secondly, this License preserves for the author and publisher a way to get credit for their work, while not being considered responsible for modifications made by others.

This License is a kind of "copyleft", which means that derivative works of the document must themselves be free in the same sense. It complements the GNU General Public License, which is a copyleft license designed for free software.

We have designed this License in order to use it for manuals for free software, because free software needs free documentation: a free program should come with manuals providing the same freedoms that the software does. But this License is not limited to software manuals; it can be used for any textual work, regardless of subject matter or whether it is published as a printed book. We recommend this License principally for works whose purpose is instruction or reference.

1. APPLICABILITY AND DEFINITIONS

This License applies to any manual or other work, in any medium, that contains a notice placed by the copyright holder saying it can be distributed under the terms of this License. Such a notice grants a world-wide, royalty-free license, unlimited in duration, to use that work under the conditions stated herein. The "Document", below, refers to any such manual or work. Any member of the public is a licensee, and is addressed as "you". You accept the license if you copy, modify or distribute the work in a way requiring permission under copyright law.

A "Modified Version" of the Document means any work containing the Document or a portion of it, either copied verbatim, or with modifications and/or translated into another language.

A "Secondary Section" is a named appendix or a front-matter section of the Document that deals exclusively with the relationship of the publishers or authors of the Document to the Document's overall subject (or to related matters) and contains nothing that could fall directly within that overall subject. (Thus, if the Document is in part a textbook of mathematics, a Secondary Section may not explain any mathematics.) The relationship could be a matter of historical connection with the subject or with related matters, or of legal, commercial, philosophical, ethical or political position regarding them.

The "Invariant Sections" are certain Secondary Sections whose titles are designated, as being those of Invariant Sections, in the notice that says that the Document is released under this License. If a section does not fit the above definition of Secondary then it is not allowed to be designated as Invariant. The Document may contain zero Invariant Sections. If the Document does not identify any Invariant Sections then there are none.

The "Cover Texts" are certain short passages of text that are listed, as Front-Cover Texts or Back-Cover Texts, in the notice that says that the Document is released under this License. A Front-Cover Text may be at most 5 words, and a Back-Cover Text may be at most 25 words.

A "Transparent" copy of the Document means a machine-readable copy, represented in a format whose specification is available to the general public, that is suitable for revising the document straightforwardly with generic text editors or (for images composed of pixels) generic paint programs or (for drawings) some widely available drawing editor, and that is suitable for input to text formatters or for automatic translation to a variety of formats suitable for input to text formatters. A copy made in an otherwise Transparent file format whose markup, or absence of markup, has been arranged to thwart or discourage subsequent modification by readers is not Transparent. An image format is not Transparent if used for any substantial amount of text. A copy that is not "Transparent" is called "Opaque".

Examples of suitable formats for Transparent copies include plain ASCII without markup, Texinfo input format, LaTeX input format, SGML or XML using a publicly available DTD, and standard-conforming simple HTML, PostScript or PDF designed for human modification. Examples of transparent image formats include PNG, XCF and JPG. Opaque formats include proprietary formats that can be read and edited only by proprietary word processors, SGML or XML for which the DTD and/or processing tools are not generally available, and the machine-generated HTML, PostScript or PDF produced by some word processors for output purposes only.

The "Title Page" means, for a printed book, the title page itself, plus such following pages as are needed to hold, legibly, the material this License requires to appear in the title page. For works in formats which do not have any title page as such, "Title Page" means the text near the most prominent appearance of the work's title, preceding the beginning of the body of the text.

A section "Entitled XYZ" means a named subunit of the Document whose title either is precisely XYZ or contains XYZ in parentheses following text that translates XYZ in another language. (Here XYZ stands for a specific section name mentioned below, such as "Acknowledgements", "Dedications", "Endorsements", or "History".) To "Preserve the Title" of such a section when you modify the Document means that it remains a section "Entitled XYZ" according to this definition.

The Document may include Warranty Disclaimers next to the notice which states that this License applies to the Document. These Warranty Disclaimers are considered to be included by reference in this License, but only as regards disclaiming warranties: any other implication that these Warranty Disclaimers may have is void and has no effect on the meaning of this License.

2. VERBATIM COPYING

You may copy and distribute the Document in any medium, either commercially or noncommercially, provided that this License, the copyright notices, and the license notice saying this License applies to the Document are reproduced in all copies, and that you add no other conditions whatsoever to those of this License. You may not use technical measures to obstruct or control the reading or further copying of the copies you make or distribute. However, you may accept compensation in exchange for copies. If you distribute a large enough number of copies you must also follow the conditions in section 3.

You may also lend copies, under the same conditions stated above, and you may publicly display copies.

3. COPYING IN QUANTITY

If you publish printed copies (or copies in media that commonly have printed covers) of the Document, numbering more than 100, and the Document's license notice requires Cover Texts, you must enclose the copies in covers that carry, clearly and legibly, all these Cover Texts: Front-Cover Texts on the front cover, and Back-Cover Texts on the back cover. Both covers must also clearly and legibly identify you as the publisher of these copies. The front cover must present the full title with all words of the title equally prominent and visible. You may add other material on the covers in addition. Copying with changes limited to the covers, as long as they preserve the title of the Document and satisfy these conditions, can be treated as verbatim copying in other respects.

If the required texts for either cover are too voluminous to fit legibly, you should put the first ones listed (as many as fit reasonably) on the actual cover, and continue the rest onto adjacent pages.

If you publish or distribute Opaque copies of the Document numbering more than 100, you must either include a machine-readable Transparent copy along with each Opaque copy, or state in or with each Opaque copy a computer-network location from which the general network-using public has access to download using public-standard network protocols a complete Transparent copy of the Document, free of added material. If you use the latter option, you must take reasonably prudent steps, when you begin distribution of Opaque copies in quantity, to ensure that this Transparent copy will remain thus accessible at the stated location until at least one year after the last time you distribute an Opaque copy (directly or through your agents or retailers) of that edition to the public.

It is requested, but not required, that you contact the authors of the Document well before redistributing any large number of copies, to give them a chance to provide you with an updated version of the Document.

4. MODIFICATIONS

You may copy and distribute a Modified Version of the Document under the conditions of sections 2 and 3 above, provided that you release the Modified Version under precisely this License, with the Modified Version filling the role of the Document, thus licensing distribution and modification of the Modified Version to whoever possesses a copy of it. In addition, you must do these things in the Modified Version:

-
- A. Use in the Title Page (and on the covers, if any) a title distinct from that of the Document, and from those of previous versions (which should, if there were any, be listed in the History section of the Document). You may use the same title as a previous version if the original publisher of that version gives permission.
 - B. List on the Title Page, as authors, one or more persons or entities responsible for authorship of the modifications in the Modified Version, together with at least five of the principal authors of the Document (all of its principal authors, if it has fewer than five), unless they release you from this requirement.
 - C. State on the Title page the name of the publisher of the Modified Version, as the publisher.
 - D. Preserve all the copyright notices of the Document.
 - E. Add an appropriate copyright notice for your modifications adjacent to the other copyright notices.
 - F. Include, immediately after the copyright notices, a license notice giving the public permission to use the Modified Version under the terms of this License, in the form shown in the Addendum below.
 - G. Preserve in that license notice the full lists of Invariant Sections and required Cover Texts given in the Document's license notice.
 - H. Include an unaltered copy of this License.
 - I. Preserve the section Entitled "History", Preserve its Title, and add to it an item stating at least the title, year, new authors, and publisher of the Modified Version as given on the Title Page. If there is no section Entitled "History" in the Document, create one stating the title, year, authors, and publisher of the Document as given on its Title Page, then add an item describing the Modified Version as stated in the previous sentence.
 - J. Preserve the network location, if any, given in the Document for public access to a Transparent copy of the Document, and likewise the network locations given in the Document for previous versions it was based on. These may be placed in the "History" section. You may omit a network location for a work that was published at least four years before the Document itself, or if the original publisher of the version it refers to gives permission.
 - K. For any section Entitled "Acknowledgements" or "Dedications", Preserve the Title of the section, and preserve in the section all the substance and tone of each of the contributor acknowledgements and/or dedications given therein.
 - L. Preserve all the Invariant Sections of the Document, unaltered in their text and in their titles. Section numbers or the equivalent are not considered part of the section titles.
 - M. Delete any section Entitled "Endorsements". Such a section may not be included in the Modified Version.
 - N. Do not retitle any existing section to be Entitled "Endorsements" or to conflict in title with any Invariant Section.
 - O. Preserve any Warranty Disclaimers.

If the Modified Version includes new front-matter sections or appendices that qualify as Secondary Sections and contain no material copied from the Document, you may at your option designate some or all of these

sections as invariant. To do this, add their titles to the list of Invariant Sections in the Modified Version's license notice. These titles must be distinct from any other section titles.

You may add a section Entitled "Endorsements", provided it contains nothing but endorsements of your Modified Version by various parties—for example, statements of peer review or that the text has been approved by an organization as the authoritative definition of a standard.

You may add a passage of up to five words as a Front-Cover Text, and a passage of up to 25 words as a Back-Cover Text, to the end of the list of Cover Texts in the Modified Version. Only one passage of Front-Cover Text and one of Back-Cover Text may be added by (or through arrangements made by) any one entity. If the Document already includes a cover text for the same cover, previously added by you or by arrangement made by the same entity you are acting on behalf of, you may not add another; but you may replace the old one, on explicit permission from the previous publisher that added the old one.

The author(s) and publisher(s) of the Document do not by this License give permission to use their names for publicity for or to assert or imply endorsement of any Modified Version.

5. COMBINING DOCUMENTS

You may combine the Document with other documents released under this License, under the terms defined in section 4 above for modified versions, provided that you include in the combination all of the Invariant Sections of all of the original documents, unmodified, and list them all as Invariant Sections of your combined work in its license notice, and that you preserve all their Warranty Disclaimers.

The combined work need only contain one copy of this License, and multiple identical Invariant Sections may be replaced with a single copy. If there are multiple Invariant Sections with the same name but different contents, make the title of each such section unique by adding at the end of it, in parentheses, the name of the original author or publisher of that section if known, or else a unique number. Make the same adjustment to the section titles in the list of Invariant Sections in the license notice of the combined work.

In the combination, you must combine any sections Entitled "History" in the various original documents, forming one section Entitled "History"; likewise combine any sections Entitled "Acknowledgements", and any sections Entitled "Dedications". You must delete all sections Entitled "Endorsements".

6. COLLECTIONS OF DOCUMENTS

You may make a collection consisting of the Document and other documents released under this License, and replace the individual copies of this License in the various documents with a single copy that is included in the collection, provided that you follow the rules of this License for verbatim copying of each of the documents in all other respects.

You may extract a single document from such a collection, and distribute it individually under this License, provided you insert a copy of this License into the extracted document, and follow this License in all other

respects regarding verbatim copying of that document.

7. AGGREGATION WITH INDEPENDENT WORKS

A compilation of the Document or its derivatives with other separate and independent documents or works, in or on a volume of a storage or distribution medium, is called an "aggregate" if the copyright resulting from the compilation is not used to limit the legal rights of the compilation's users beyond what the individual works permit. When the Document is included in an aggregate, this License does not apply to the other works in the aggregate which are not themselves derivative works of the Document.

If the Cover Text requirement of section 3 is applicable to these copies of the Document, then if the Document is less than one half of the entire aggregate, the Document's Cover Texts may be placed on covers that bracket the Document within the aggregate, or the electronic equivalent of covers if the Document is in electronic form. Otherwise they must appear on printed covers that bracket the whole aggregate.

8. TRANSLATION

Translation is considered a kind of modification, so you may distribute translations of the Document under the terms of section 4. Replacing Invariant Sections with translations requires special permission from their copyright holders, but you may include translations of some or all Invariant Sections in addition to the original versions of these Invariant Sections. You may include a translation of this License, and all the license notices in the Document, and any Warranty Disclaimers, provided that you also include the original English version of this License and the original versions of those notices and disclaimers. In case of a disagreement between the translation and the original version of this License or a notice or disclaimer, the original version will prevail.

If a section in the Document is Entitled "Acknowledgements", "Dedications", or "History", the requirement (section 4) to Preserve its Title (section 1) will typically require changing the actual title.

9. TERMINATION

You may not copy, modify, sublicense, or distribute the Document except as expressly provided for under this License. Any other attempt to copy, modify, sublicense or distribute the Document is void, and will automatically terminate your rights under this License. However, parties who have received copies, or rights, from you under this License will not have their licenses terminated so long as such parties remain in full compliance.

10. FUTURE REVISIONS OF THIS LICENSE

The Free Software Foundation may publish new, revised versions of the GNU Free Documentation License from time to time. Such new versions will be similar in spirit to the present version, but may differ in detail to address new problems or concerns. See <http://www.gnu.org/copyleft/>.

Each version of the License is given a distinguishing version number. If the Document specifies that a particular numbered version of this License "or any later version" applies to it, you have the option of following the terms and conditions either of that specified version or of any later version that has been published (not as a draft) by the Free Software Foundation. If the Document does not specify a version number of this License, you may choose any version ever published (not as a draft) by the Free Software Foundation.

ADDENDUM: How to use this License for your documents

Copyright (c) YEAR YOUR NAME.

Permission is granted to copy, distribute and/or modify this document under the terms of the GNU Free Documentation License, Version 1.2 or any later version published by the Free Software Foundation; with no Invariant Sections, no Front-Cover Texts, and no Back-Cover Texts. A copy of the license is included in the section entitled "GNU Free Documentation License".