



University of Antwerp
Faculty of Applied
Engineering

This is your \title

This is your \subtitle

This is your \author

This is your \date



University of Antwerp
Faculty of Applied
Engineering

This is your \title

This is your \subtitle

This is your \author

This is your \date

This is your \title

This is your \subtitle

This is your \author

This is your \date

What's on the menu?

Bon appétit!

- 1 Loading the theme and theme options
- 2 Title slides
- 3 Regular slides
 - Bare
 - With graphic eye candy
- 4 Intermission slides
 - Standard section slides
 - Custom intermission slides
- 5 Demo of some inner theme parts
- 6 Advanced material

1. Loading the theme and theme options

Using our beamer theme

The uantwerpen beamer theme is distributed by CTAN. It should be installed with your T_EX distribution by default.

You can load the package in your preamble as:

```
\documentclass[aspectratio=1610]{beamer}  
\usetheme[theme-options-go-here]{uantwerpen}  
\usepackage[english]{babel}
```

Remarks

- The theme behaves well for all supported beamer aspect ratios.
- 16×10 is currently your best option to maximize your slide size given a modern LCD-projector!
- Only `dutch` and `english` are supported. The correct logoware is selected using the `babel` language option!

Theme options

The following theme options may come in handy:

`X` to invoke your own faculty's colors and logos, with `X` one of the options in the table on the right
(I assume you know your faculty abbreviation)

`nofonts` disables font loading, so you can load your own fonts

`rgb` to select RGB color encoding (best for projecting, default)

`cmk` to select CMYK color encoding (best for printing)

`neutralcolors` to disable your faculty colors and use the standard UAntwerpen colors

The defaults of the theme are:

- no faculty option (\Rightarrow standard UAntwerpen logos)
- `rgb`

option
be
fbd
ggw
lw
ow
re
sw
ti
we
iob

A note on the compiler you are using

Fonts galore

Depending on the type of compiler you use, a different font scheme is loaded:

\LaTeX — ancient compiler - no support

Don't use!

$\text{pdf}\text{\LaTeX}$ — very old school compiler - no OTF/TTF support

Computer Modern Sans Serif is used as font

$\text{X}\text{\LaTeX}$ — old school compiler - the first to have OTF/TTF support

Calibri is used as font (with cmbright math fonts)

$\text{Lua}\text{\LaTeX}$ — current compiler - your best option

Calibri is used as font (with cmbright math fonts)

2. Title slides

Title slides

Contents — The contents of the title slide can be set in your preamble using the classical \LaTeX commands:

- `\title{}`
- `\subtitle{}`
- `\author{}`
- `\date{}`

We don't specify an institute, as the logos do so.

Code — The titleslide is easily typeset as:

```
\begin{frame}[option]  
  \maketitle  
\end{frame}
```

with no option, or one of: `normal`, `negative`, `negativefill`.

3. Regular slides

3. Regular slides

Bare

Frame titles

And subtitles

How to specify them!

Titles are specified using `\frametitle{}` or `\framesubtitle{}` or even easier as first and second argument to the `frame` environment (or their derived versions).

```
\begin{frame}[options go here, comma separated]
  {first argument}
  {second argument}
  frame contents
\end{frame}
```

Don't need them?

If you need a slide without titles: just don't specify them!

Want to get rid of the footer as well?

Specify the `plain` option to the frame.

The canvas

Flavors — The canvas of the slide has four flavors:

- normal** the ordinary white background slide
- negativefill** a reverse video slide on a background (in maincolor) without white margins
- negative** a reverse video slide on a background (in maincolor) with white margins
- graphicfill** a graphic canvas without white margins (graphic can be photo, graph, ...)
- graphic** a graphic canvas with white margins (graphic can be anything)

They are specified as options to the frame environment (or its derivatives).

Remarks

- You don't need to specify the normal canvas, it is the default.
- In handout mode the negative and negativefill canvas will be typeset as normal canvas (to allow for easy printing).
- The graphic option has many variants that we will discuss later.

A negativefill slide

with a subtle subtitle

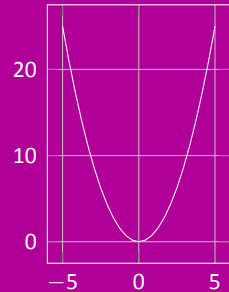
Lorem ipsum dolor sit amet, consectetur adipiscing elit. Ut purus elit, vestibulum ut, placerat ac, adipiscing vitae, felis. Curabitur dictum gravida mauris. Nam arcu libero, nonummy eget, consectetur id, vulputate a, magna. Donec vehicula augue eu neque. Pellentesque habitant morbi tristique senectus et netus et malesuada fames ac turpis egestas. Mauris ut leo. Cras viverra metus rhoncus sem. Nulla et lectus vestibulum urna fringilla ultrices. Phasellus eu tellus sit amet tortor gravida placerat. Integer sapien est, iaculis in, pretium quis, viverra ac, nunc. Praesent eget sem vel leo ultrices bibendum. Aenean faucibus. Morbi dolor nulla, malesuada eu, pulvinar at, mollis ac, nulla. Curabitur auctor semper nulla. Donec varius orci eget risus. Duis nibh mi, congue eu, accumsan eleifend, sagittis quis, diam. Duis eget orci sit amet orci dignissim rutrum.

A negative slide

with a subtle subtitle

Don't do this! Don't use a title and subtitle, nor straight text but put material on this slide that does not touch or cross the edges of the background!

E.g., the graph on the bottom right The best advice is not to reserve this canvas for title frames and intermission slides.



Vertical alignment

You can easily specify the vertical alignment of your frame contents, using the options

- t for top
- c for center
- b for bottom

Example:

```
\begin{frame}[t]  
  {Title}  
  {Subtitle}  
  frame contents  
\end{frame}
```

Colors

What a wonderful world

Standard colors

You can select the theme colors using:

Main color: can be specified as `\TeX-color maincolor`

Side color: can be specified as `\TeX-color sidecolor`

Base color: can be specified as `\TeX-color basecolor`

Advice

- Stick to the standard colors or use grayscale tints!
- Only use color when functional (e.g. in graphs)

Alert You can use `\alert` to grab the attention of the user. It will typeset your content in red.

Not taking any advice?

You can fiddle with the colors, but do so in smart way. Use `\setbeamercolor`. You can see how it is used in the `beamercolorthemeuantwerpen.sty` file.

Logo demo

The logo's can be used as follows (but you should not need them):

- `\includegraphics[width=3cm]{\logopos}`



- `\includegraphics[width=3cm]{\logoneg}`



- `\includegraphics[width=3cm]{\logomonowhite}`



3. Regular slides

With graphic eye candy

Basic idea

The idea — put support material (photo or graph) on the slide next to the frame content.
This is done by

- specifying an appropriate canvas
- using an appropriate frame derivative

Good combinations

frame option	graphic on frame	corresponding frame derivative
lqgraphic	left quarter	r3qframe
rqgraphic	right quarter	l3qframe
lhgraphic	left half	rhframe
rhgraphic	right half	lhframe
thgraphic	top half	bhframe
bhgraphic	bottom half	thframe

Some Random Title

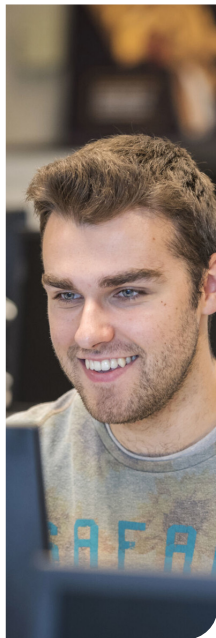
Please, adapt!

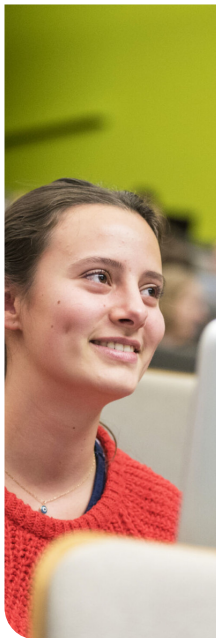
The slide has been typeset as:

```
\begin{l3qframe}[rqgraphic={<load photo here>}]  
  {Title}  
  {Subtitle}  
  frame contents  
\end{l3qframe}
```

Remarks

- Load photo as:
`\includegraphics[width=0.25\paperwidth, min height=\textheight] {image.jpg}`
- If `rqgraphic` is specified without argument, a standard photo is loaded.
- Note: you can avoid rounding the corner using the frame option `noround` (may be useful when not using a photo)





Some Random Title

Please, adapt!

The slide has been typeset as:

```
\begin{r3qframe}[lqgraphic={<load photo here>}]  
  {Title}  
  {Subtitle}  
  frame contents  
\end{r3qframe}
```

Remarks

- Load photo as:
`\includegraphics[width=0.25\paperwidth, min height=\textheight] {image.jpg}`
- If `rqgraphic` is specified without argument, a standard photo is loaded.
- Note: you can avoid rounding the corner using the frame option `noround` (may be useful when not using a photo)

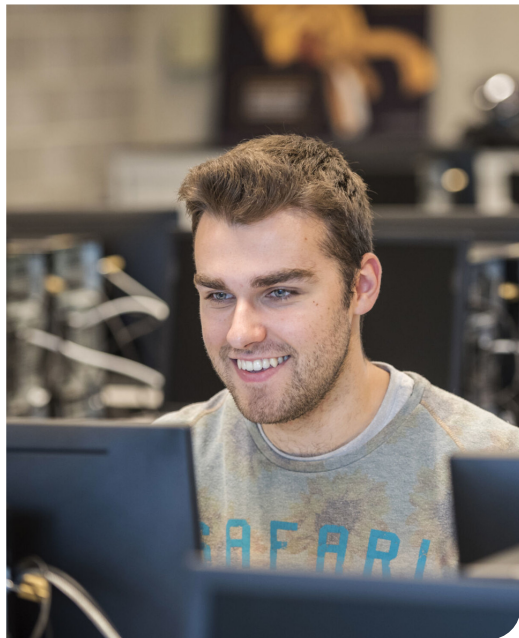
Some Random Title

The slide has been typeset as:

```
\begin{lhframe}[rhgraphic={<load photo  
here>}]  
  {Title}  
  {Subtitle}  
  frame contents  
\end{lhframe}
```

Remarks

- Load photo as:
`\includegraphics[
width=0.5\paperwidth, min
height=\textheight]{image.jpg}`
- If `rqgraphic` is specified without argument, a standard photo is loaded.
- Note: avoid rounding the corner using `noround`





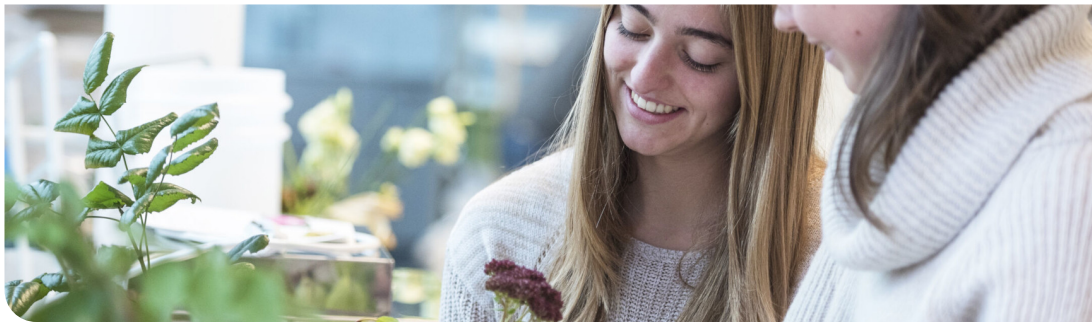
Some Random Title

The slide has been typeset as:

```
\begin{rhframe}[lhgraphic={<load photo  
here>}]  
  {Title}  
  {Subtitle}  
  frame contents  
\end{rhframe}
```

Remarks

- Load photo as:
`\includegraphics[min
width=0.5\paperwidth, min
height=\textheight] {image.jpg}`
- If `rqgraphic` is specified without argument, a standard photo is loaded.
- Note: avoid rounding the corner using `noround`



Some Random Title

Please, adapt!

The slide has been typeset as:

```
\begin{bhframe}[thgraphic={<load photo here>}]  
  {Title}  
  {Subtitle}  
  frame contents  
\end{bhframe}
```

Some Random Title

Please, adapt!

The slide has been typeset as:

```
\begin{thframe}[bhgraphic={<load photo here>}]  
  {Title}  
  {Subtitle}  
  frame contents  
\end{thframe}
```



4. Intermission slides

4. Intermission slides

Standard section slides

Basic idea

You can select any of the canvas templates: negative, negativefill, graphic, graphicfill and normal, and combine it with:

`\sectionpage`

`\subsectionpage`

Example:

```
\begin{frame}[negative]
  \sectionpage
\end{frame}

\begin{frame}[negative]
  \subsectionpage
\end{frame}
```

(this how the previous two slide were generated)

4. Intermission slides

Custom intermission slides

Basic idea

If you are a fan of graphic material in slideware, you can use a `graphic` or `graphicfill` canvas in combination with small snippets you put on the slide using

```
\place[node options] at (x,y) {<material>}
```

with

- $(x, y) = (0, 0)$ the bottom left of the slide and $(1, 1)$ the top right of the slide
- `node options` any options you want to hand over to the `tikz` node that is used to position the material.

E.g., the next slide was created using:

```
\begin{frame}[graphic,t]  
  \place at (0.5,0.5) {\uantwerpenicon[scale=0.8]}  
\end{frame}
```

You will have to run \LaTeX twice in order for the position to be correct!



Shading photographs

Often you need make a photograph a little bit more opaque in order for the (white) text to readable.

To this end you can use the following command

```
\darken[s]{<material>}
```

with *s* a value between 0 and 1 to specify the level of darkening.

E.g., the next slide was created using:

```
\begin{frame}[graphicfill={\darken[0.25]{\includegraphics[scale=0.1,min  
width=\paperwidth,min height=\paperheight]{Images/uantwerpen-09.jpg}},t]  
\place [anchor=north east] at (0.95,0.5) {  
  \uantwerpencallout{3}{2.5}{  
    \bfseries You cannot be serious!\\[1ex]  
    John McEnroe}  
  }  
\end{frame}
```



You cannot be serious!

John McEnroe



University of Antwerp
Faculty of Applied
Engineering

Shading photographs locally

You can also choose to shade the local backdrop of the material you put on the side. If you like the `\uantwerpencallout` command of the previous slide, you can give it an optional argument to set the fill opacity of the backdrop behind the text.

E.g., the next slide was created using:

```
\begin{frame}[graphic,t]
  \place [anchor=north west] at (0.1,0.9) {
    \uantwerpencallout[fill opacity=0.5]{4.5}{2.5}{
      \bfseries I'll be back!\\[1ex]
      Arnold Schwarzenegger}
    } \end{frame}
```

The `\uantwerpencallout` command has the following syntax:

```
\uantwerpencallout [options] {width}{height}{contents}
```

Remember to run \LaTeX twice in order for the position of the callout to be correct!



I'll be back!

Arnold Schwarzenegger



University of Antwerp
Faculty of Applied
Engineering

5. Demo of some inner theme parts

Headings

on two levels

You can set headings on two levels, by using

- `\heading{}`
- `\subheading{}`

Main subject

blabla

Subtopic 1

blabla

Subtopic 2

blabla

Next main subject

blabla

Itemize / enumerations

Different styles

Usage:

Set them (in your preamble) using: `\setbeamertemplate{itemize items}[triangle]`

The default of the uantwerpen beamer template is set to square to be similar to our logo.

default

- ▶ First level
 - ▶ Second level
 - ▶ Third level

triangle

- ▶ First level
 - ▶ Second level
 - ▶ Third level

circle

- First level
 - Second level
 - Third level

ball

- First level
 - Second level
 - Third level

square

- First level
 - Second level
 - Third level

enumeration

1. First level
 - 1.1 Second level
 - 1.1.1 Third level

6. Advanced material

Customizing the template

If you want to override logos/colors to create a template for your own research group or department: renew the commands below. The redefinitions must be put just after the `\begin{document}` statement.

The construction below allows you to put the stuff in a style file that you must load after (!) the `\usetheme` command.

```
\AtBeginDocument{
  \renewcommand\logopos{your-pos-logo-filename-here}
  \renewcommand\logoneg{your-negative-logo-filename-here}
  \renewcommand\logomonowhite{your-mono-logo-filename-here}
  \renewcommand\iconfile{your-icon-filename-here}
  \colorlet{maincolor}{your-favorite-color}
  \colorlet{sidecolor}{your-secondfavorite-color}
  \colorlet{basecolor}{some-solid-color}
}
```

Some genuine advice

Dear user,

Candy slides are nice for PR, but bad for conveying a message.

Beamer is a tool to typeset technical presentations. Need more animation and eye candy? Use other tools. They are much easier in ruining your audiences' day.

Effective slides are simple slides.

Go by cognitive consonance, flirt with cognitive dissonance, but stay away from cognitive cacophony. This presentation is i.m.ho. a bad one, as it shows the cacophony of possibilities. But hey, you were the one asking for it.

A lot of effort has gone into this template. I hope you like it. If you have good suggestions, e-mail me. If you have questions, I might even help you.

Cheers!

Walter Daems
(March 2021)