

Proxy Quick Start

SUSE Manager Proxy 1.7

August 14, 2012

www.suse.com

SUSE® Manager Proxy is a SUSE Manager add-on and caches software packages on an internal, central server. The proxy caches patch updates from SUSE or custom RPMs generated by third-party organizations. A proxy allows to use bandwidth more effectively, because client systems connect to the proxy for updates and the SUSE Manager server is no longer required to handle all client requests. The proxy also supports transparent custom package deployment.

This Quick Start explains how to install and set up SUSE Manager Proxy and how to get started with the most important tasks.

Conceptual Overview

SUSE Manager Proxy is an open source (GPLv2) solution that provides the following features:

- Cache software packages in a Squid proxy.
- Client systems see the SUSE Manager Proxy as a SUSE Manager server instance.
- The SUSE Manager Proxy itself is registered as a client system with the SUSE Manager server.

SUSE Manager Proxy's main purpose is to improve the overall SUSE Manager performance by reducing bandwidth requirements and accelerating response time.

System Requirements

The following section informs you about the system requirements. For supported clients and their requirements, see Section “Supported Client Systems” (↑Quick Start).

Hardware Requirements

Hardware requirements highly depend on the customer's usage scenario.

CPU

Required: Intel™ Pentium 4 or later, AMD Opteron or later, 2 GHz or more, 512 KB cache or equivalent.

Recommended: Intel or AMD multi-core processor, 2.4 GHz dual processor, 512 KB cache or equivalent.

RAM

Required: 512 MB (for base operation).

Recommended (for production operation): 1 GB or more.

Free Disk Space

Required: 2 GB for base installation.

Additionally: At least 25 GB for caching per distribution or channel.

Other Requirements

IMPORTANT: Network Setup

For correct installation and setup of SUSE Manager Proxy, make sure the following requirements are fulfilled:

Hostname and IP Address

To guarantee that SUSE Manager Proxy's domain name can be resolved by its clients, the proxy and the client machines must be linked to a working Domain Name Server (DNS) server in the customer environment.

The hostname of the SUSE Manager Proxy server must not contain uppercase letters as this might cause the `jabberd` messaging daemon to fail.

Novell Customer Center

For using SUSE Manager Proxy, you need an account at the Novell Customer Center (NCC) where your purchased products and product subscriptions are registered. Make sure you have the following subscriptions:

- One or more subscriptions for SUSE Manager Proxy
- One or more subscriptions for SUSE Manager
- Subscriptions for the products on the client systems you want to register with SUSE Manager via SUSE Manager Proxy

- Subscriptions to client entitlements for the client system you want to register with SUSE Manager via SUSE Manager Proxy

Network Time Protocol (NTP)

The connection to the Web server via Secure Sockets Layer (SSL) requires correct time settings on the server, proxy and clients. For this reason, all systems must use NTP. If SUSE Manager is used in conjunction with a stand-alone database, the machine hosting the separate database must be set to the same time zone as SUSE Manager.

Virtual Environments

For running SUSE Manager Proxy in virtual environments, use the following settings for the virtual machine (VM):

- at least 1 GB of RAM,
- Bridged network.

The following virtual environments are supported:

- KVM,
- VMware,
- Xen,
- Hyper-V.

For running SUSE Manager Proxy in KVM, VMware, or Hyper-V, use the SUSE Manager Proxy ISO image. For Xen, use the Xen VM image.

Installation and Setup

SUSE Manager Proxy is an application combined with an operating system (appliance). It can be deployed on industry hardware or in a virtual environment.

If SUSE Manager Proxy is registered with a SUSE Manager instance, it will receive updates directly from the configured SUSE Manager channel.

The YaST graphical user interface will guide you through the installation and the setup process. It is started in text mode. Use the →| key to navigate among individual elements. To select a value from a list, use the ↑ and ↓ arrow keys and press Enter. To activate an option, press the Space key.

Installation

The following procedure describes the installation on a physical machine. Make sure the machine you intend to use fulfills the “Hardware Requirements” (page 1). If you want to install the appliance in a virtual machine, additionally check the settings listed in “Virtual Environments” (↑Quick Start).

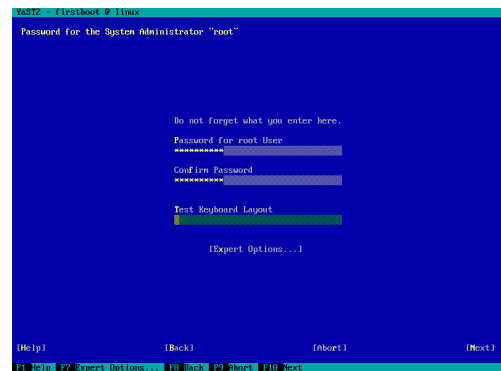
Procedure 13 Installing the Appliance

WARNING: Loss of Data

Installing SUSE Manager Proxy on a physical machine will completely erase any data on the hard disk used for installation. Before you start the installation process, create a backup of your hard disks.

1. Boot your future SUSE Manager Proxy server from the installation medium. Select *Install/Restore SUSE Manager Proxy*.
2. If your machine contains more than one hard disk, you are asked which one to use for the installation of SUSE Manager Proxy. Navigate with the arrow keys, and use the space key to mark the desired hard disk. You are asked if you want to continue and you are warned that the installation will destroy all data on the disk.
3. To proceed, answer with Yes. The deployment process takes over. This step may take some time as large amounts of data need to be unpacked and verified. After the verification, YaST firstboot is started.
4. In the first screen, set the system *Language* and *Keyboard Layout* for your future SUSE Manager Proxy. Proceed with *Next*.
5. In the next screen, set the `root` password for your SUSE Manager Proxy server and confirm it.

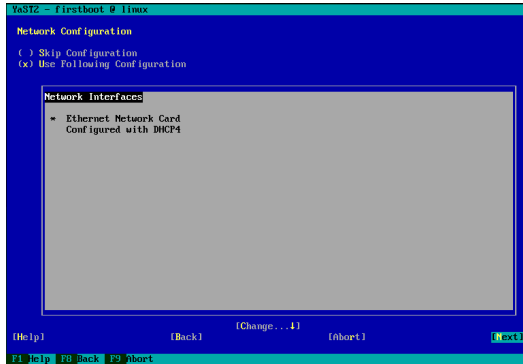
Figure 1 YaST Firstboot—Password for the System Administrator



Proceed with *Next*.

6. In the following screen, read the licenses and agree to them. Proceed with *Next*. The installation routine checks some basic system requirements and depending on the results, lets you decide whether to proceed with the installation or cancel.
7. In the next screen, configure the network settings. Note the network requirements listed in Section “Other Requirements” (page 1). Either choose *Use Following Configuration* or *Change* to modify the network setup according to your wishes.

Figure 2 YaST Firstboot—Network Configuration



Proceed with *Next*.

8. Configure the *Clock and Time Zone* to use for your SUSE Manager server. Proceed with *Next*.
9. Configure the NTP settings according to your wishes. For more information about the options, refer to *Help*. Note the NTP requirements listed in Section “Other Requirements” (page 1). Proceed with *Next*.
10. On the *Installation Completed* screen, select *Finish* to close YaST firstboot. The boot process continues.
11. Wait for the boot process to finish.

Setup

After running YaST firstboot, log in as `root`, register SUSE Manager Proxy with SUSE Manager (see Section “Registering with SUSE Manager” (page 3), and run the `configure-proxy.sh` setup script from the command-line (see Section “Running `configure-proxy.sh`” (page 5)).

Registering with SUSE Manager

Registering SUSE Manager Proxy with SUSE Manager is done with a bootstrap script that deploys all necessary information to the proxy. The bootstrap script refers some parameters (like activation keys or GPG keys) that depend on your particular setup.

Procedure 14 Creating Activation Keys

Activation keys define entitlements and which channels and groups the client system is allowed to subscribe to. This information is passed on to all systems registered with a key. Each activation key is bound to the organization for which it has been created.

NOTE: Activation Keys for New Organizations

If you need to create activation keys for a new organization, assign system entitlements first. For details, refer to Procedure “Assigning Entitlements to an Organization” (↑Reference Guide) and Section “Organization Management” (↑Quick Start). The default organization has all necessary prerequisites by default.

1. Log in to the SUSE Manager Web interface as administrator.
2. Switch to the *Systems* tab and select *Activation Keys*.
3. Click the *Create New Key* link at the upper right corner.
4. Enter a *Description* to identify the generated activation key.
5. If you want the key to be generated automatically, leave the *Key* input field empty. If you want to use a certain string for the key, define the desired string in the *Key* input field.

WARNING: Allowed Characters

Do not use commas within the key string. All other characters are allowed. (Commas are used as separators when registering client systems with multiple activation keys with `rhndreg_ks`).

6. To restrict the number of client systems that can be registered with the activation key, set a *Usage Limit* by entering a maximum number of systems.

For unlimited use, leave this field empty.

7. With *Base Channels*, set the primary channel for the key. This can be either the `SUSE Manager Default` channel or a custom base channel. Additionally, add the *Proxy* channel to the list.

Choosing `SUSE Manager Default` allows proxy systems to register with the default Novell-provided channel that corresponds to their installed version of SUSE Linux Enterprise.

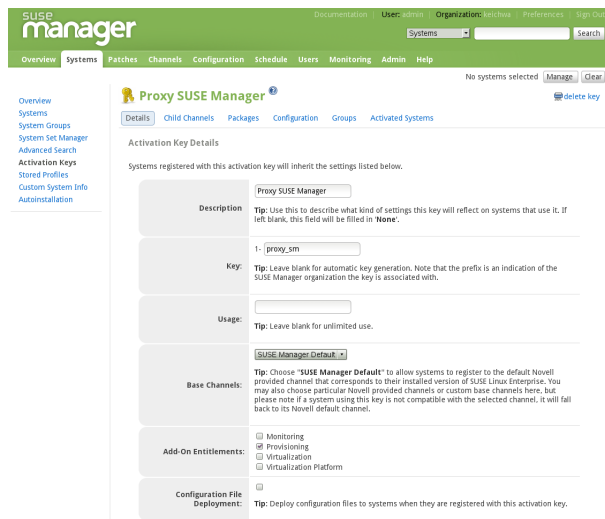
8. Activate the *Add-On Entitlements* you want to grant to the proxy systems registered with that key. Activate at least *Provisioning*, which is a requirement for the proxy systems.
9. If any newly registered proxy systems of your organization should inherit the properties of this key, activate the *Universal Default* checkbox. Only one universal default activation key can be defined per organization.

WARNING: Changing the Default Activation Key

Only one universal default activation key can be defined per organization. If a universal key already exists for this organization, you will unset the currently used universal key by activating the checkbox.

10. Generate the key by clicking *Create Activation Key*.

Figure 3 Example Activation Key



NOTE: Activation Key Update

After modifying or adding any components that are bound to an existing activation key (for example, channels to which to subscribe to), make sure to update the key under *Systems* → *Activation Keys* → *KEY_TO_MODIFY* → *Update Activation Key*.

The next steps are to generate the `bootstrap.sh` script on the SUSE Manager server, then edit a copy of the script and run the modified script on each proxy machine that you want to register with SUSE Manager.

Procedure 15 Generating the Bootstrap Script

Several options in the bootstrap script can be set via the SUSE Manager Web interface, for example, if remote command execution or remote configuration of proxy systems should be allowed.

1. On the SUSE Manager Web interface, switch to the *Admin* tab and select *SUSE Manager Configuration* → *Bootstrap Script*.
2. Check the options listed on the page and activate or deactivate them according to your needs.

NOTE: Remote Command Execution and Configuration

If you choose to *Enable Remote Configuration* or *Enable Remote Commands*, make sure that the `rhncfg-actions` package is installed on the proxy systems:

1. Switch to the *Systems* tab and select *Activation Keys*.
2. From the list of activation keys, click the one you want to modify.
3. Click the *Packages* subtab, enter `rhncfg-actions` into the input field and click *Update Key*.

The required package for remote command execution and configuration will automatically be installed on all systems

registered with the respective activation key.

3. Click the *Update* button. The necessary bootstrap script is generated and stored on the server's filesystem in the `/srv/www/htdocs/pub/bootstrap` directory. It is also available from `susemanager.example.com/pub/bootstrap/`.
4. Proceed with Procedure 16, “Editing the Bootstrap Script and Registering Proxy Systems” (page 4).

Procedure 16 Editing the Bootstrap Script and Registering Proxy Systems

Adjust the generated bootstrap script according to your needs. The minimal requirement is to include the activation key. We strongly recommend to also include one or more GPG keys (for example, your organization key, and package signing keys). Then execute the resulting script on each proxy system that you want to register with SUSE Manager (either centrally from the SUSE Manager server or decentralized on each system.)

1. Log in as `root` to the SUSE Manager server.
2. Create a copy of the automatically generated script:

```
cd /srv/www/htdocs/pub/bootstrap
cp bootstrap.sh bootstrap-edited.sh
```

3. Edit the copy as follows:
 - a. Search for `ACTIVATION_KEYS` and enter the activation key from Procedure 14, “Creating Activation Keys” (page 3). Make sure to also include the organization prefix in the key, for example:

```
ACTIVATION_KEYS=1-fef154ddcf0d515fc
```

- b. Search for the `ORG_GPG_KEY` entry and enter one or more GPG keys. Multiple keys must be entered as a comma-separated list.
- c. Adjust further parameters, if needed. For details, refer to the comments in `bootstrap.sh`.
- d. To enable the script for execution, remove the `exit 1` entry from the message block. The last lines of the message block should now read:

```
echo "the exit below)"
echo
```

4. Save the edited version of the script.

5. Use one of the following possibilities to execute the edited script on all proxy machines that you want to register with SUSE Manager:

- Log in as `root` on the SUSE Manager server and execute the following commands:

```
cd /srv/www/htdocs/pub/bootstrap/  
cat bootstrap-edited.sh | ssh \  
root@client_hostname /bin/bash
```

- Log in to each proxy client system and execute the following command:

```
curl -sks https://server_hostname/pub  
/bootstrap/bootstrap-edited.sh | /bin/bash
```

The proxy clients are registered with the SUSE Manager server as specified in the bootstrap script. The SUSE Manager Web interface shows the registered proxies as client systems on the *Systems* tab.

NOTE: Missing `repodata/repomd.xml`

If the bootstrap script warns about missing `repodata/repomd.xml`, channel synchronizing is still running. Registration will succeed nevertheless, and thus package or patch updates will happen later as configured.

To be on the safe side, check on the Web interface when *Repo Cache Status* is *Completed*: click *Channels*, then the *Channel Name* to make the *Details* page visible.

Running `configure-proxy.sh`

On the proxy, log in as `root` and execute the interactive `configure-proxy.sh` script; answer questions about SUSE Manager Parent, CA Chain, Proxy version, Traceback email, Use SSL, HTTP Proxy, and provide input for an SSL certificate. A SUSE Manager Parent can be either another proxy server or a SUSE Manager server. Configuration input for monitoring follows. Next steps are CA password, whether to create and populate the configuration channel, and the credentials of the SUSE Manager server (user name and password).

If parts are missing, such as CA key and public certificate, the script prints commands that you must execute to integrate the needed files. When the mandatory files are copied, re-run `configure-proxy.sh`.

In the end, `configure-proxy.sh` activates services such as `squid`, `apache2`, and `jabberd`, required by SUSE Manager Proxy.

To check the status of the proxy system and its clients, click the proxy system's details page on the Web interface (*Systems* → *Proxy*, then the system name). *Con-*

nection and *Proxy* subtabs display the respective status information.

Registering Clients Via SUSE Manager Proxy

Registering clients via SUSE Manager Proxy is basically done the same way as registering clients directly with the SUSE Manager server. The difference is that you create a bootstrap script on the SUSE Manager Proxy with a command-line tool. The bootstrap script then deploys all necessary information to the clients. The bootstrap script refers some parameters (such as activation keys or GPG keys) that depend on your specific setup. For background information, see the Client Configuration Guide.

1. Create the client activation key on the SUSE Manager server using the Web interface as explained in Section “Client Setup” (↑Quick Start).
2. On the proxy, execute the `mgr-bootstrap` command-line tool as `root`. If needed, either edit the resulting bootstrap script or use additional command-line switches such as `--activation-keys`:

```
mgr-bootstrap --activation-keys=key-string
```

3. Execute the bootstrap script on the clients as described in Procedure “Editing the Bootstrap Script and Registering Clients” (↑Quick Start) or above for the proxy systems in Procedure 16, “Editing the Bootstrap Script and Registering Proxy Systems” (page 4).

The clients are registered with the SUSE Manager Proxy specified in the bootstrap script. To check the status of the proxy connected client system, click the client system's details page on the SUSE Manager Web interface (*Systems*, then select the system name). The *Connection* subtab displays the connection path to the client.

For more information about bootstrapping, refer to *Using Bootstrap* (↑Client Configuration Guide).

Legal Notice

Copyright© 2006–2012 Novell, Inc. and contributors. All rights reserved.

Permission is granted to copy, distribute and/or modify this document under the terms of the GNU Free Documentation License, Version 1.2 or (at your option) version 1.3; with the Invariant Section being this copyright notice and license. A copy of the license version 1.2 is included in the section entitled “GNU Free Documentation License”.

Alternatively this document is licensed under the Creative Commons Attribution-Share Alike 3.0 Unported license (“CC-BY-SA”). An explanation of CC-BY-SA

is available at <http://creativecommons.org/licenses/by-sa/3.0/>. In accordance with CC-BY-SA, if you distribute this document or an adaptation of it, you must provide the URL for the original version. Novell, as the licensor of this document, waives the right to enforce, and agrees not to assert, Section 4d of CC-BY-SA to the fullest extent permitted by applicable law.

For Novell trademarks, see the Novell Trademark and Service Mark list <http://www.novell.com/company/legal/trademarks/tmlist.html>.

Linux* is a registered trademark of Linus Torvalds. All other third party trademarks are the property of their respective owners. A trademark symbol (®, ™ etc.) denotes a Novell trademark; an asterisk (*) denotes a third party trademark.

All information found in this book has been compiled with utmost attention to detail. However, this does not guarantee complete accuracy. Neither Novell, Inc., SUSE LINUX Products GmbH, the authors, nor the translators shall be held liable for possible errors or the consequences thereof.

GNU Free Documentation License

Copyright (C) 2000, 2001, 2002 Free Software Foundation, Inc. 51 Franklin St, Fifth Floor, Boston, MA 02110-1301 USA. Everyone is permitted to copy and distribute verbatim copies of this license document, but changing it is not allowed.

0. PREAMBLE

The purpose of this License is to make a manual, textbook, or other functional and useful document "free" in the sense of freedom: to assure everyone the effective freedom to copy and redistribute it, with or without modifying it, either commercially or noncommercially. Secondly, this License preserves for the author and publisher a way to get credit for their work, while not being considered responsible for modifications made by others.

This License is a kind of "copyleft", which means that derivative works of the document must themselves be free in the same sense. It complements the GNU General Public License, which is a copyleft license designed for free software.

We have designed this License in order to use it for manuals for free software, because free software needs free documentation: a free program should come with manuals providing the same freedoms that the software does. But this License is not limited to software manuals; it can be used for any textual work, regardless of subject matter or whether it is published as a printed book. We recommend this License principally for works whose purpose is instruction or reference.

1. APPLICABILITY AND DEFINITIONS

This License applies to any manual or other work, in any medium, that contains a notice placed by the copyright holder saying it can be distributed under the terms of this License. Such a notice grants a world-wide, royalty-free license, unlimited in duration, to use that work under the conditions stated herein. The "Document", below, refers to any such manual or work. Any member of the public is a licensee, and is addressed as "you". You accept the license if you copy, modify or distribute the work in a way requiring permission under copyright law.

A "Modified Version" of the Document means any work containing the Document or a portion of it, either copied verbatim, or with modifications and/or translated into another language.

A "Secondary Section" is a named appendix or a front-matter section of the Document that deals exclusively with the relationship of the publishers or authors of the Document to the Document's overall subject (or to related matters) and contains nothing that could fall directly within that overall subject. (Thus, if the Document is in part a textbook of mathematics, a Secondary Section may not explain any mathematics.) The relationship could be a matter of historical connection with the subject or with related matters, or of legal, commercial, philosophical, ethical or political position regarding them.

The "Invariant Sections" are certain Secondary Sections whose titles are designated, as being those of Invariant Sections, in the notice that says that the Document is released under this License. If a section does not fit the above definition of Secondary then it is not allowed to be designated as Invariant. The Document may contain zero Invariant Sections. If the Document does not identify any Invariant Sections then there are none.

The "Cover Texts" are certain short passages of text that are listed, as Front-Cover Texts or Back-Cover Texts, in the notice that says that the Document is released under this License. A Front-Cover Text may be at most 5 words, and a Back-Cover Text may be at most 25 words.

A "Transparent" copy of the Document means a machine-readable copy, represented in a format whose specification is available to the general public, that is suitable for revising the document straightforwardly with generic text editors or (for images composed of pixels) generic paint programs or (for drawings) some widely available drawing editor, and that is suitable for input to text formatters or for automatic translation to a variety of formats suitable for input to text formatters. A copy made in an otherwise Transparent file format whose markup, or absence of markup, has been arranged to thwart or discourage subsequent modification by readers is not Transparent. An image format is not Transparent if used for any substantial amount of text. A copy that is not "Transparent" is called "Opaque".

Examples of suitable formats for Transparent copies include plain ASCII without markup, Texinfo input format, LaTeX input format, SGML or XML using a publicly available DTD, and standard-conforming simple HTML, PostScript or PDF designed for human modification. Examples of transparent image formats include PNG, XCF and JPG. Opaque formats include proprietary formats that can be read and edited only by proprietary word processors, SGML or XML for which the DTD and/or processing tools are not generally available, and the machine-generated HTML, PostScript or PDF produced by some word processors for output purposes only.

The "Title Page" means, for a printed book, the title page itself, plus such following pages as are needed to hold, legibly, the material this License requires to appear in the title page. For works in formats which do not have any title page as such, "Title Page" means the text near the most prominent appearance of the work's title, preceding the beginning of the body of the text.

A section "Entitled XYZ" means a named subunit of the Document whose title either is precisely XYZ or contains XYZ in parentheses following text that translates XYZ in another language. (Here XYZ stands for a specific section name mentioned below, such as "Acknowledgements", "Dedications", "Endorsements", or "History".) To "Preserve the Title" of such a section when you modify the Document means that it remains a section "Entitled XYZ" according to this definition.

The Document may include Warranty Disclaimers next to the notice which states that this License applies to the Document. These Warranty Disclaimers are considered to be included by reference in this License, but only as regards disclaiming warranties; any other implication that these Warranty Disclaimers may have is void and has no effect on the meaning of this License.

2. VERBATIM COPYING

You may copy and distribute the Document in any medium, either commercially or noncommercially, provided that this License, the copyright notices, and the license notice saying this License applies to the Document are reproduced in all copies, and that you add no other conditions whatsoever to those of this License. You may not use technical measures to obstruct or control the reading or further copying of the copies you make or distribute. However, you may accept compensation in exchange for copies. If you distribute a large enough number of copies you must also follow the conditions in section 3.

You may also lend copies, under the same conditions stated above, and you may publicly display copies.

3. COPYING IN QUANTITY

If you publish printed copies (or copies in media that commonly have printed covers) of the Document, numbering more than 100, and the Document's license notice requires Cover Texts, you must enclose the copies in covers that carry, clearly and legibly, all these Cover Texts: Front-Cover Texts on the front cover, and Back-Cover Texts on the back cover. Both covers must also clearly and legibly identify you as the publisher of these copies. The front cover must present the full title with all words of the title equally prominent and visible. You may add other material on the covers in addition. Copying with changes limited to the covers, as long as they preserve the title of the Document and satisfy these conditions, can be treated as verbatim copying in other respects.

If the required texts for either cover are too voluminous to fit legibly, you should put the first ones listed (as many as fit reasonably) on the actual cover, and continue the rest onto adjacent pages.

If you publish or distribute Opaque copies of the Document numbering more than 100, you must either include a machine-readable Transparent copy along with each Opaque copy, or state in or with each Opaque copy a computer-network location from which the general network-using public has access to download using public-standard network protocols a complete Transparent copy of the Document, free of added material. If you use the latter option, you must take reasonably prudent steps, when you begin distribution of Opaque copies in quantity, to ensure that this Transparent copy will remain thus accessible at the stated location until at least one year after the last time you distribute an Opaque copy (directly or through your agents or retailers) of that edition to the public.

It is requested, but not required, that you contact the authors of the Document well before redistributing any large number of copies, to give them a chance to provide you with an updated version of the Document.

4. MODIFICATIONS

You may copy and distribute a Modified Version of the Document under the conditions of sections 2 and 3 above, provided that you release the Modified Version under precisely this License, with the Modified Version filling the role of the Document, thus licensing distribution and modification of the Modified Version to whoever possesses a copy of it. In addition, you must do these things in the Modified Version:

- A. Use in the Title Page (and on the covers, if any) a title distinct from that of the Document, and from those of previous versions (which should, if there were any, be listed in the History section of the Document). You may use the same title as a previous version if the original publisher of that version gives permission.
- B. List on the Title Page, as authors, one or more persons or entities responsible for authorship of the modifications in the Modified Version, together with at least five of the principal authors of the Document (all of its principal authors, if it has fewer than five), unless they release you from this requirement.
- C. State on the Title page the name of the publisher of the Modified Version, as the publisher.
- D. Preserve all the copyright notices of the Document.
- E. Add an appropriate copyright notice for your modifications adjacent to the other copyright notices.
- F. Include, immediately after the copyright notices, a license notice giving the public permission to use the Modified Version under the terms of this License, in the form shown in the Addendum below.
- G. Preserve in that license notice the full lists of Invariant Sections and required Cover Texts given in the Document's license notice.
- H. Include an unaltered copy of this License.
- I. Preserve the section Entitled "History", Preserve its Title, and add to it an item stating at least the title, year, new authors, and publisher of the Modified Version as given on the Title Page. If there is no section Entitled "History" in the Document, create one stating the title, year, authors, and publisher of the Document as given on its Title Page, then add an item describing the Modified Version as stated in the previous sentence.
- J. Preserve the network location, if any, given in the Document for public access to a Transparent copy of the Document, and likewise the network locations given in the Document for previous versions it was based on. These may be placed in the "History" section. You may omit a network location for a work that was published at least four years before the Document itself, or if the original publisher of the version it refers to gives permission.
- K. For any section Entitled "Acknowledgements" or "Dedications", Preserve the Title of the section, and preserve in the section all the substance and tone of each of the contributor acknowledgements and/or dedications given therein.
- L. Preserve all the Invariant Sections of the Document, unaltered in their text and in their titles. Section numbers or the equivalent are not considered part of the section titles.
- M. Delete any section Entitled "Endorsements". Such a section may not be included in the Modified Version.
- N. Do not retitle any existing section to be Entitled "Endorsements" or to conflict in title with any Invariant Section.
- O. Preserve any Warranty Disclaimers.

If the Modified Version includes new front-matter sections or appendices that qualify as Secondary Sections and contain no material copied from the Document, you may at your option designate some or all of these sections as invariant. To do this, add their titles to the list of Invariant Sections in the Modified Version's license notice. These titles must be distinct from any other section titles.

You may add a section Entitled "Endorsements", provided it contains nothing but endorsements of your Modified Version by various parties—for example, statements of peer review or that the text has been approved by an organization as the authoritative definition of a standard.

You may add a passage of up to five words as a Front-Cover Text, and a passage of up to 25 words as a Back-Cover Text, to the end of the list of Cover Texts in the Modified Version. Only one passage of Front-Cover Text and one of Back-Cover Text may be added by (or through arrangements made by) any one entity. If the Document already includes a cover text for the same cover, previously added by you or by arrangement made by the same entity you are acting on behalf of, you may not add another; but you may replace the old one, on explicit permission from the previous publisher that added the old one.

The author(s) and publisher(s) of the Document do not by this License give permission to use their names for publicity for or to assert or imply endorsement of any Modified Version.

5. COMBINING DOCUMENTS

You may combine the Document with other documents released under this License, under the terms defined in section 4 above for modified versions, provided that you include in the combination all of the Invariant Sections of all of the original documents, unmodified, and list them all as Invariant Sections of your combined work in its license notice, and that you preserve all their Warranty Disclaimers.

The combined work need only contain one copy of this License, and multiple identical Invariant Sections may be replaced with a single copy. If there are multiple Invariant Sections with the same name but different contents, make the title of each such section unique by adding at the end of it, in parentheses, the name of the original author or publisher of that section if known, or else a unique number. Make the same adjustment to the section titles in the list of Invariant Sections in the license notice of the combined work.

In the combination, you must combine any sections Entitled "History" in the various original documents, forming one section Entitled "History"; likewise combine any sections Entitled "Acknowledgements", and any sections Entitled "Dedications". You must delete all sections Entitled "Endorsements".

6. COLLECTIONS OF DOCUMENTS

You may make a collection consisting of the Document and other documents released under this License, and replace the individual copies of this License in the various documents with a single copy that is included in the collection, provided that you follow the rules of this License for verbatim copying of each of the documents in all other respects.

You may extract a single document from such a collection, and distribute it individually under this License, provided you insert a copy of this License into the extracted document, and follow this License in all other respects regarding verbatim copying of that document.

7. AGGREGATION WITH INDEPENDENT WORKS

A compilation of the Document or its derivatives with other separate and independent documents or works, in or on a volume of a storage or distribution medium, is called an "aggregate" if the copyright resulting from the compilation is not used to limit the legal rights of the compilation's users beyond what the individual works permit. When the Document is included in an aggregate, this License does not apply to the other works in the aggregate which are not themselves derivative works of the Document.

If the Cover Text requirement of section 3 is applicable to these copies of the Document, then if the Document is less than one half of the entire aggregate, the Document's Cover Texts may be placed on covers that bracket the Document within the aggregate, or the electronic equivalent of covers if the Document is in electronic form. Otherwise they must appear on printed covers that bracket the whole aggregate.

8. TRANSLATION

Translation is considered a kind of modification, so you may distribute translations of the Document under the terms of section 4. Replacing Invariant Sections with translations requires special permission from their copyright holders, but you may include translations of some or all Invariant Sections in addition to the original versions of these Invariant Sections. You may include a translation of this License, and all the license notices in the Document, and any Warranty Disclaimers, provided that you also include the original English version of this License and the original versions of those notices and disclaimers. In case of a disagreement between

the translation and the original version of this License or a notice or disclaimer, the original version will prevail.

If a section in the Document is Entitled "Acknowledgements", "Dedications", or "History", the requirement (section 4) to Preserve its Title (section 1) will typically require changing the actual title.

9. TERMINATION

You may not copy, modify, sublicense, or distribute the Document except as expressly provided for under this License. Any other attempt to copy, modify, sublicense or distribute the Document is void, and will automatically terminate your rights under this License. However, parties who have received copies, or rights, from you under this License will not have their licenses terminated so long as such parties remain in full compliance.

10. FUTURE REVISIONS OF THIS LICENSE

The Free Software Foundation may publish new, revised versions of the GNU Free Documentation License from time to time. Such new versions will be similar in spirit to the present version, but may differ in detail to address new problems or concerns. See <http://www.gnu.org/copyleft/>.

Each version of the License is given a distinguishing version number. If the Document specifies that a particular numbered version of this License "or any later version" applies to it, you have the option of following the terms and conditions either of that specified version or of any later version that has been published (not as a draft) by the Free Software Foundation. If the Document does not specify a version number of this License, you may choose any version ever published (not as a draft) by the Free Software Foundation.

ADDENDUM: How to use this License for your documents

```
Copyright (c) YEAR YOUR NAME.
Permission is granted to copy, distribute and/or modify this document
under the terms of the GNU Free Documentation License, Version 1.2
or any later version published by the Free Software Foundation;
with no Invariant Sections, no Front-Cover Texts, and no Back-Cover Texts.
A copy of the license is included in the section entitled "GNU
Free Documentation License".
```

If you have Invariant Sections, Front-Cover Texts and Back-Cover Texts, replace the "with...Texts." line with this:

```
with the Invariant Sections being LIST THEIR TITLES, with the
Front-Cover Texts being LIST, and with the Back-Cover Texts being LIST.
```

If you have Invariant Sections without Cover Texts, or some other combination of the three, merge those two alternatives to suit the situation.

If your document contains nontrivial examples of program code, we recommend releasing these examples in parallel under your choice of free software license, such as the GNU General Public License, to permit their use in free software.

