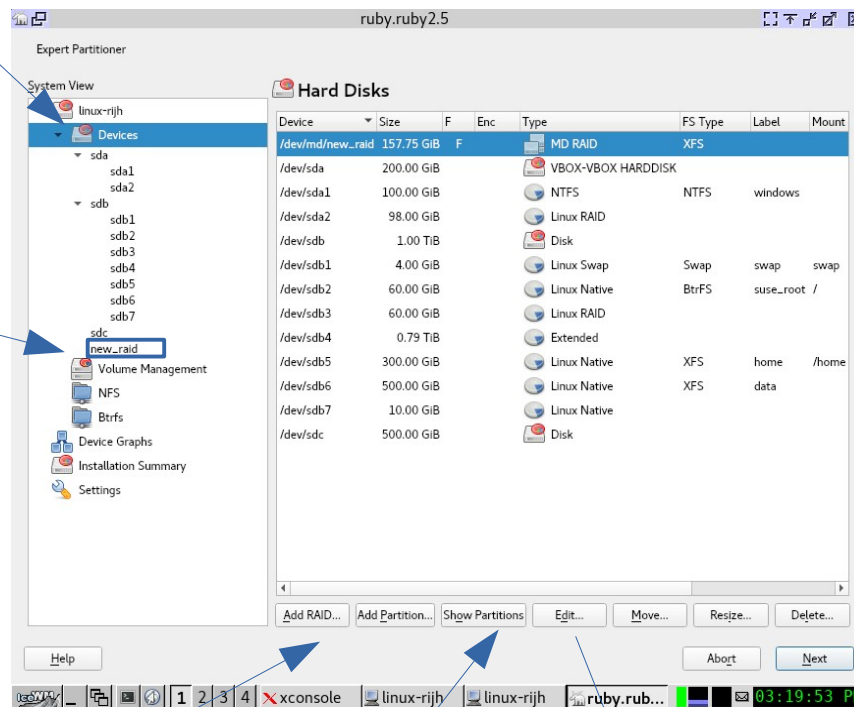


“Hard Disks” section renamed as “Devices”.

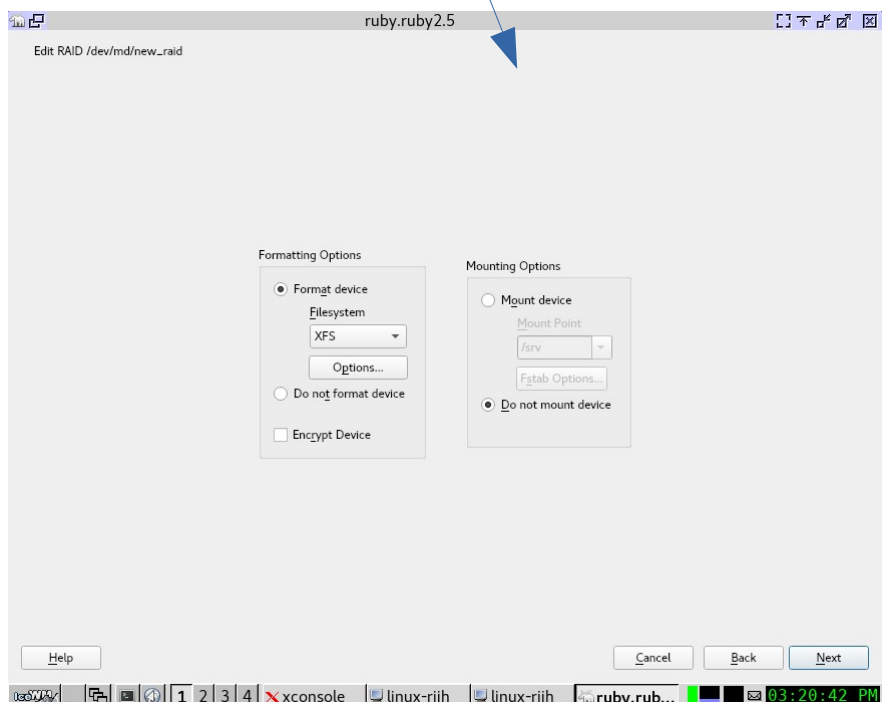
Removed “RAID” Section. MD RAIDs are included into “Devices” section.

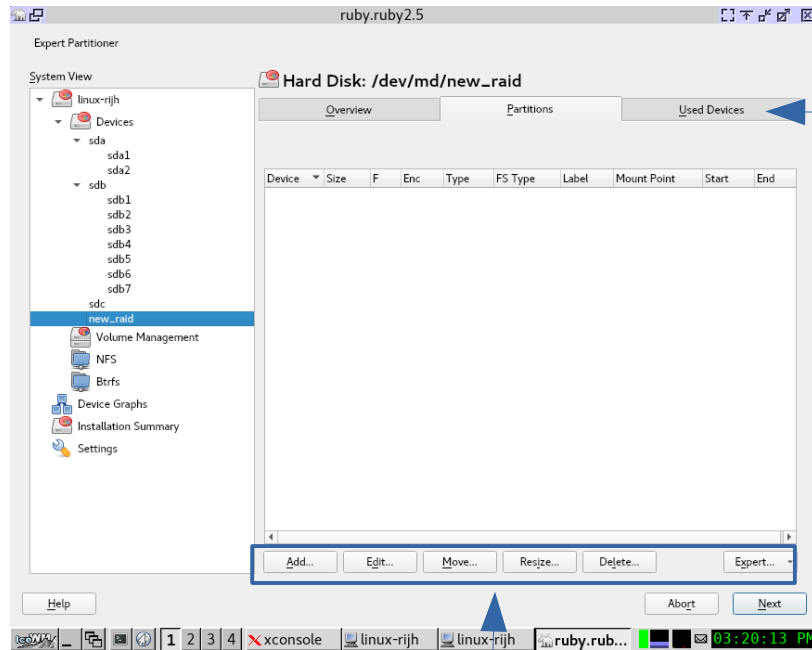


Added “Add RAID” button. It allows to create a new Software RAID (as old RAID section).

Added “Show Partitions” button. It goes to the view of the selected device (see below).

“Edit” button always opens the dialog to format and set mount point (when possible). This allows to format disks, raids, etc.





An third tab “Used Devices” is added when the device is a RAID (already working for BIOS RAIDs)

All possible partition actions can be performed over a Software RAID (as a Disk, BIOS RAID, etc)