



Retail Guide

SUSE Manager 4.0

July 23, 2020



Table of Contents

Retail Guide	1
What is SUSE Manager for Retail?	1
About this book	1
Components	1
The SUSE Manager Server	1
Build Hosts	1
Branch Server	2
Point-of-Service Terminals	2
Fitting It All Together	2
Installation	4
Requirements	4
Installing with the Unified Installer	5
Network Architecture	10
Setting up	11
Deploy Terminals	13
Create A Hardware Type Group	14
Assign and Configure the Saltboot Formula for Each Hardware Type Group	14
Synchronize Images to the Branch Server	15
Deploy Images to the Terminals	16
Introduction to Retail Formulas	19
Administration	19
Mass Configuration	20
Delta Images	23
Retail Migration	25
Before You Migrate	25
Prepare to Migrate from SUSE Linux Enterprise Point of Service	25
Migrate SUSE Linux Enterprise Point of Service 11 to SUSE Manager for Retail	26
Migration with Complete Data Dump	26
Migration with Branch by Branch Data Dump	27
Converting XML to YAML	28
What Next?	29
More Documentation	29
Support	29
GNU Free Documentation License	29

Retail Guide

What is SUSE Manager for Retail?

SUSE Manager for Retail 4.0 is an open source infrastructure management solution, optimized and tailored specifically for the retail industry. It uses the same technology as SUSE Manager, but is customized to address the needs of retail organizations.

SUSE Manager for Retail is designed for use in retail situations where customers can use point-of-service terminals to purchase or exchange goods, take part in promotions, or collect loyalty points. In addition to retail installations, it can also be used for novel purposes, such as maintaining student computers in an educational environment, or self-service kiosks in banks or hospitals.

SUSE Manager for Retail is intended for use in installations that include servers, workstations, point-of-service terminals, and other devices. It allows administrators to install, configure, and update the software on their servers, and manage the deployment and provisioning of point-of-service machines.

About this book

This document provides an overview of SUSE Manager for Retail, and guides you through initial installation and setup. It should be read in conjunction with the SUSE Manager documentation suite, available from <https://documentation.suse.com/suma/4.0/>.

For more information about managing your SUSE Manager for Retail environment, or to find out where to get help, see [**Retail** > **Retail-next** >].

Components

SUSE Manager for Retail is made up of various components. For more on how these components work together, see [retail-network-arch.pdf](#).

The SUSE Manager Server

The SUSE Manager server contains information about infrastructure, network topology, and everything required to automate image deployment and perform day-to-day operations on branches and terminals. This can include database entries of registered systems, Salt pillar data for images, image assignments, partitioning, network setup, network services, and more.

Build Hosts

Build hosts can be arbitrary servers or virtual machines. They are used to securely build operating system images.

For more information on build hosts, see [**Administration** > **Image-management** >].

Branch Server

Branch servers should be physically located close to point-of-service terminals, such as in an individual store or branch office. Branch servers provide services for PXE boot, and act as an image cache, Salt broker, and proxy for software components (RPM packages). The branch server can also manage local networking, and provide DHCP and DNS services.

Point-of-Service Terminals

Point-of-Service (PoS) terminals can come in many different formats, such as point-of-sale terminals, kiosks, digital scales, self-service systems, and reverse-vending systems. Every terminal, however, is provided by a vendor, who set basic information about the device in the firmware. SUSE Manager for Retail accesses this vendor information to determine how best to work with the terminal in use.

In most cases, different terminals will require a different operating system (OS) image to ensure they work correctly. For example, an information kiosk has a high-resolution touchscreen, where a cashier terminal might only have a very basic display. While both of these terminals require similar processing and network functionality, they will require different OS images. The OS images ensure that the different display mechanisms work correctly.

The minimum memory requirement is 1 GB for hosts that need to run OS images built with Kiwi (PXE booted or not).

Hardware Requirements for PoS Terminals: . At least 1 GB of RAM. For more information, see the documentation of the underlying system (in this case: SUSE Linux Enterprise Server 12). . Disk space depending on the image size.

For more information on SUSE Manager for Retail PoS terminals, see documentation on SUSE Manager Salt clients ([**Client-configuration** > **Client-config-overview** >]).

SUSE Manager for Retail supports PoS terminals that boot using both BIOS and UEFI. For UEFI booting terminals, you will need to configure the EFI partition in the Saltboot formula. For more information on EFI in the Saltboot formula, see [**Salt** > **Formula-saltboot** >].

Fitting It All Together

SUSE Manager for Retail uses the same technology as SUSE Manager, but is customized to address the needs of retail organizations.

Hardware Types

Because every environment is different, and can contain many different configurations of many different terminals, SUSE Manager for Retail uses hardware types to simplify device management.

Hardware types allow you to group devices according to manufacturer and device name. Then all devices of a particular type can be managed as one.

Branch System Groups

SUSE Manager for Retail uses system groups to organize the various devices in your environment.

Each branch requires a system group, containing a single branch server, and the PoS terminals associated with that server. Each system group is identified with a Branch ID. The Branch ID is used in formulas and scripts to automatically update the entire group.

Salt Formulas

SUSE Manager for Retail uses Salt formulas to help simplify configuration. Formulas are pre-written Salt states, that are used to configure your installation.

You can use formulas to apply configuration patterns to your hardware groups. SUSE Manager for Retail uses the Saltboot formula, which defines partitioning and OS images for terminals.

You can use default settings for formulas, or edit them to make them more specific to your environment.

For more information about formulas, see [**Retail > Retail-formulas-intro >**].

Saltboot

Saltboot is a collection of tools and processes that are used to bootstrap, deploy and validate SUSE Manager for Retail terminals.

Saltboot consists of:

- Initialization:

The saltboot **initrd** is created during image building and is required for bootstrapping terminals.

- Saltboot state:

The Salt state that contains the logic for the entire saltboot process.

- Partitioning pillars:

The Salt pillar structure that describes how terminals are partitioned and what image is deployed on each terminal.

- Images and boot images pillars:

When the image building feature in SUSE Manager successfully builds an image that contains the saltboot **initrd**, the image and boot image Salt pillars are created.

The saltboot process involves the SUSE Manager Server, a terminal running the saltboot **initrd**, and the branch server providing the saltboot services to the terminal.

For a detailed diagram explaining how the saltboot boot process works, see [[Retail > Retail-saltboot-diagram >](#)].

Installation

SUSE Manager for Retail and SUSE Manager for Retail Branch Server are installed using the SUSE Linux Enterprise Server Unified Installer.

Requirements

Before you install SUSE Manager for Retail, ensure your environment meets the minimum requirements. This section lists the requirements for a SUSE Manager for Retail installation. These requirements are in addition to the SUSE Manager requirements listed at [[Installation > General-requirements >](#)].



SUSE Manager for Retail is only supported on the x86_64 architecture.

Table 1. Hardware Requirements for SUSE Manager Server

Hardware	Recommended
CPU	Minimum 4 dedicated 64-bit CPU cores
RAM:	<i>Test Server</i> Minimum 8 GB
	<i>Base Installation</i> Minimum 16 GB
	<i>Production Server</i> Minimum 32 GB
Disk Space:	<code>/ (root)</code> 24 GB
	<code>/var/lib/pgsql</code> Minimum 50 GB
	<code>/srv</code> Minimum 50 GB
	<code>/var/Spacewalk</code> Minimum 50 GB per SUSE product and 360 GB per Red Hat product

Table 2. Hardware Requirements for Branch Server

Hardware	Recommended
CPU	Minimum 2 dedicated 64-bit CPU cores
RAM:	<i>Test Server</i> Minimum 2 GB
	<i>Production Server</i> Minimum 8 GB
Disk Space:	<code>/ (root)</code> Minimum 24 GB
	<code>/srv</code> Minimum 100 GB

Hardware	Recommended
	<code>/var/cache</code> Minimum 100 GB

Table 3. Hardware Requirements for Build Host

Hardware	Recommended
CPU	Multi-core 64-bit CPU
RAM:	<i>Test Server</i> Minimum 2 GB
	<i>Production Server</i> Minimum 4 GB
Disk Space:	<code>/</code> (<i>root</i>) Minimum 24 GB
	<code>/var/lib/Kiwi</code> Minimum 10 GB

Network Requirements

- The SUSE Manager Server requires a reliable and fast WAN connection.
- The branch server requires a reliable WAN connection, to reach the SUSE Manager Server.
- If you are using a dedicated network, the branch server requires at least two network interfaces: one connected to the WAN with reachable SUSE Manager server, and one connected to the internal branch LAN.
- Terminals require a LAN connection to the branch server network.

Installing with the Unified Installer

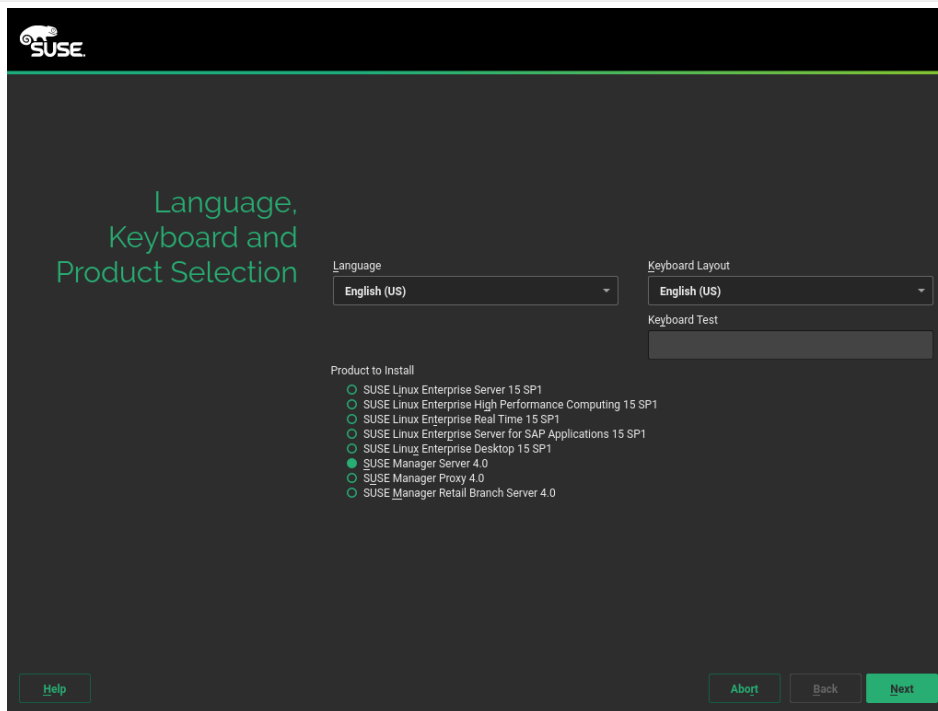
SUSE Manager for Retail 4.0 is a SUSE base product. This section describes how to install SUSE Manager for Retail from SUSE Linux Enterprise Server installation media with the Unified Installer.

Before you begin the installation, check that your environment meets the requirements at [**Installation > General-requirements >**].

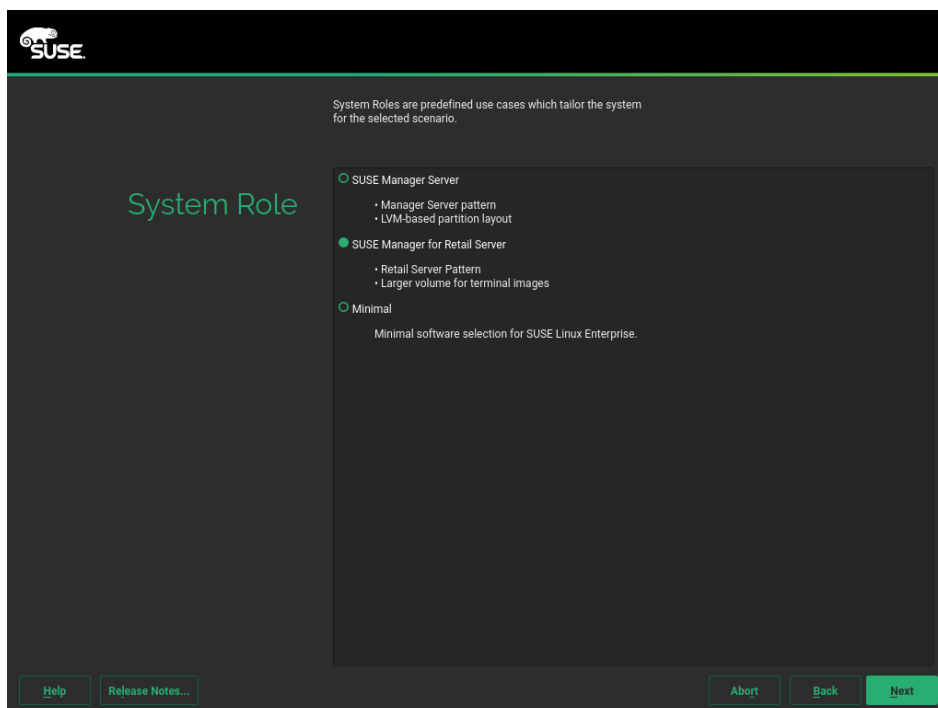
Install SUSE Manager for Retail

Procedure: Installing SUSE Manager for Retail Server from a DVD Image

1. Boot your server from the installation image. In case of trouble, you might need to adjust the boot order in the BIOS.
2. When prompted, select **Installation**.
3. In the **Language, Keyboard and Product Selection** screen, check the **SUSE Manager Server** checkbox, and click [**Next**].



4. Read and agree to the End User Licence Agreement, and click **[Next]**.
5. In the **Registration** screen, check the **Register System via scc.suse.com** checkbox, enter your SUSE Customer Center credentials, and click **[Next]**.
6. OPTIONAL: In the **Add On Product** screen, select any additional or add-on products you require, and click **[Next]**.
7. In the **System Role** screen, check the **SUSE Manager for Retail Server** checkbox, and click **[Next]**.



8. In the **Suggested Partitioning** screen, accept the default values, or use the **[Guided Setup]** or **[Expert Partitioner]** options to customize your partitioning model, and click **[Next]**.
9. In the **Clock and Time Zone** screen, enter your region and timezone, and click **[Next]**.
10. In the **Local Users** screen, create a new user, and click **[Next]**.
11. In the **System Administrator "root"** screen, create the "root" user, and click **[Next]**.
12. In the **Installation Settings** screen ensure that SSH access is open. Review the settings and click **[Install]**.

Procedure: Run the Installation Script on the SUSE Manager Server

1. Use SSH to access the command prompt of the SUSE Manager Server.
2. Run the installation script:

```
yast susemanager_setup
```

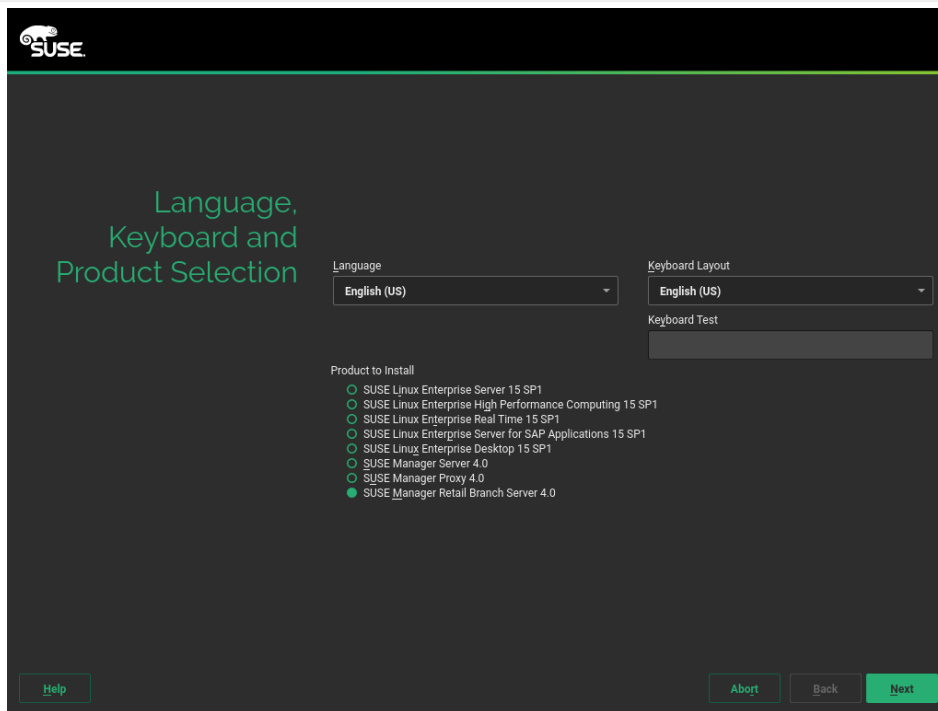
3. Follow the prompts to set up your account. Ensure you take note of the passwords you set, you will need them later on.

Continue with general SUSE Manager configuration and channel synchronization at [\[installation:server-setup\]](#).

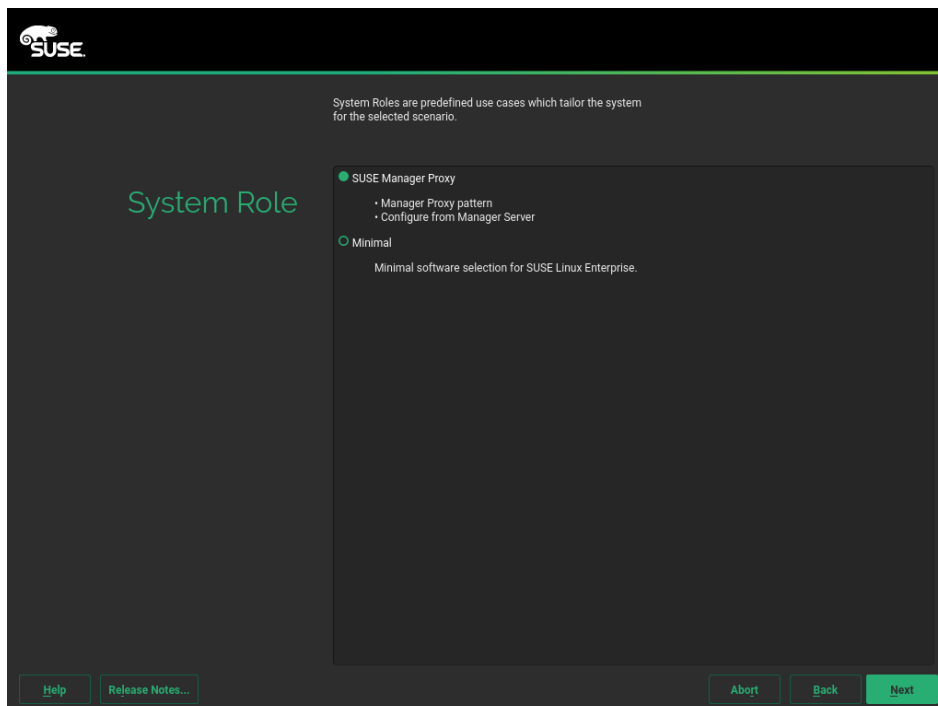
Install SUSE Manager for Retail Branch Server

Procedure: Installing the Branch Server from a DVD Image

1. Boot your server from the installation image. In case of trouble, you might need to adjust the boot order in the BIOS.
2. When prompted, select **Installation**.
3. In the **Language, Keyboard and Product Selection** screen, check the **SUSE Manager Retail Branch Server** checkbox, and click **[Next]**.



4. Read and agree to the End User Licence Agreement, and click **[Next]**.
5. In the **Registration** screen, check the **Register System via scc.suse.com** checkbox, enter your SUSE Customer Center credentials, and click **[Next]**.
6. OPTIONAL: In the **Add On Product** screen, select any additional or add-on products you require, and click **[Next]**.
7. In the **System Role** screen, check the **SUSE Manager Proxy** checkbox, and click **[Next]**.



8. In the **Suggested Partitioning** screen, accept the default values, or use the **[Guided**

Setup] or **[Expert Partitioner]** options to customize your partitioning model, and click **[Next]**.

9. In the **Clock and Time Zone** screen, enter your region and timezone, and click **[Next]**.
10. In the **Local Users** screen, create a new user, and click **[Next]**.
11. In the **System Administrator "root"** screen, create the "root" user, and click **[Next]**.
12. In the **Installation Settings** screen ensure that SSH access is open. Review the settings and click **[Install]**.

Procedure: Configuring and Registering the Branch Server

1. Create an activation key based on the **SLE-Product-SUSE-Manager-Retail-Branch-Server-4.0-Pool** base channel. For more information about activation keys, see **[Client-configuration > Clients-and-activation-keys >]**.
2. In the **Child Channels** listing, select the recommended channels by clicking the **include recommended** icon:
 - SLE-Module-Basesystem15-SP2-Pool for x86_64 SMRBS 4.1
 - SLE-Module-Basesystem15-SP2-Updates for x86_64 SMRBS 4.1
 - SLE-Module-Server-Applications15-SP2-Pool for x86_64 SMRBS 4.1
 - SLE-Module-Server-Applications15-SP2-Updates for x86_64 SMRBS 4.1
 - SLE-Product-SUSE-Manager-Retail-Branch-Server-4.1-Updates for x86_64
3. Use this activation key in SUSE Manager Proxy registration at **[Installation > Proxy-registration >]**.
4. Configure SUSE Manager Proxy. For more information on how to do this, see **[Installation > Proxy-setup >]**.



The branch server must be configured as a Salt managed proxy.



Cobbler TFTP is not supported on SUSE Manager for Retail. Do not configure the **susemanager-tftpsync-recv** tool on a SUSE Manager for Retail Branch Server.

Install SUSE Manager Build Host

Build hosts are regular SUSE Linux Enterprise Server installations registered to SUSE Manager as Salt minions. For more information how to install and register salt minions to SUSE Manager, see **[Client-configuration > Registration-overview >]**.

For how to prepare a build host from an already registered Salt minion, see [administration:image-management.pdf](#).



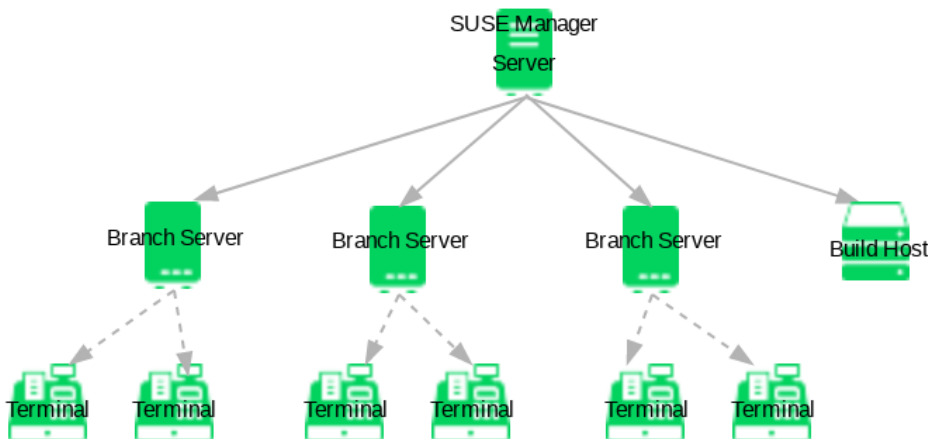
Supported base OS versions of SUSE Manager for Retail build hosts:

- SUSE Linux Enterprise Server12 SP3
- SUSE Linux Enterprise Server12 SP4
- SUSE Linux Enterprise Server11 SP3

Network Architecture

SUSE Manager for Retail uses a layered architecture:

- The first layer contains the SUSE Manager Server.
- The second layer contains one or more branch servers to provide local network and boot services. It also contains one or more build hosts.
- The final layer contains any number of deployed point-of-service terminals.



Branch servers should be physically located close to point-of-service terminals, such as in an individual store or branch office. We recommend you have a fast network connection between the branch server and its terminals. Branch servers provide services for PXE boot, and act as an image cache, Salt broker, and proxy for software components (RPM packages). The branch server can also manage local networking, and provide DHCP and DNS services.

SUSE Manager for Retail Branch servers are implemented as enhanced SUSE Manager Proxy servers. For technical background information on SUSE Manager for Retail Branch servers, see also the documentation on SUSE Manager Proxy servers ([[Installation](#) > [Install-proxy-unified](#) >]).

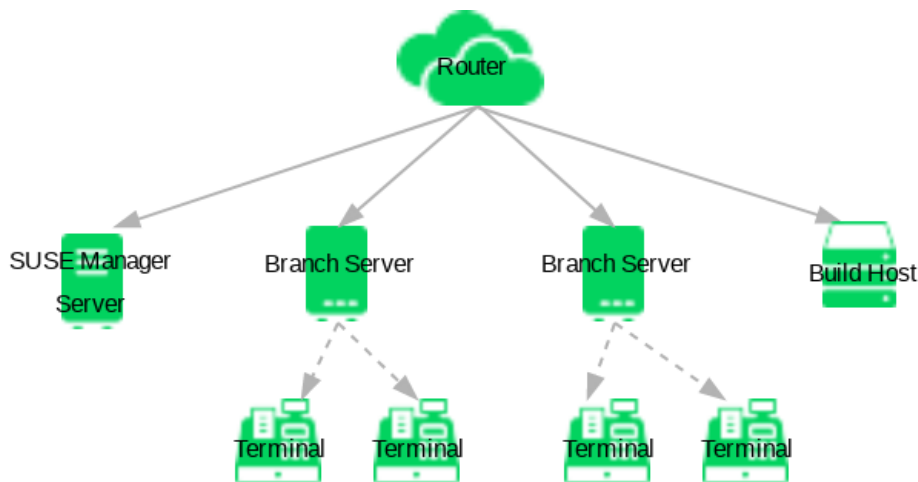
Branch Server Network Configuration

The branch server can operate in several different network configurations. The two most common configurations are a dedicated network, or a shared network.

Dedicated Network Architecture

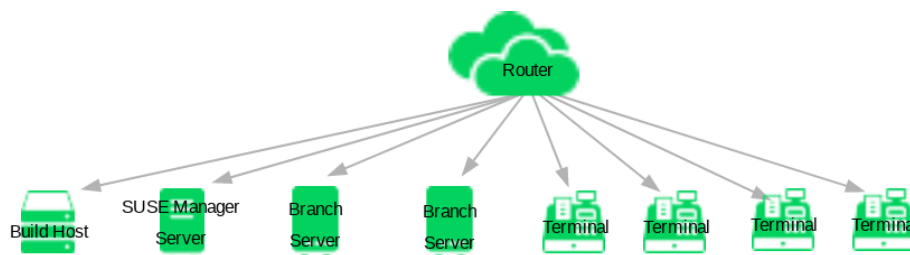
The branch server has a dedicated network interface card and terminals use an isolated internal branch

network. In this configuration, the branch server manages the internal network and provides DHCP, DNS, PXE, FTP, and TFTP services.



Shared Network Architecture

The branch server and the terminals are connected to the same network as the SUSE Manager server. In this configuration, the branch server is not required to manage a network (DHCP and DNS services), but acts as a PXE boot server and provides FTP and TFTP services.



Setting up

When you have installed the [SUSE Manager for Retail Server](#) and the [SUSE Manager Retail Branch Server](#), you need to set up your environment by following these steps:

1. Install the build host and register it to SUSE Manager
2. Configure the build host
3. Create the required system group

These are the branch server setup steps:

1. Assign and configure branch server formulas
2. Synchronize images to the branch servers

Each procedure is detailed in this section.

Create Required System Groups

SUSE Manager for Retail requires system groups for terminals and servers. Manually create these system groups during installation:

- **TERMINALS**
- **SERVERS**

Additionally, you will need to create a system group for each branch server, and each terminal hardware type in your environment.

You can create system groups using the SUSE Manager Web UI. Navigate to **Systems > System Groups** and click [**Create System Group**].

For more information about system groups, see [**Reference > Systems >**].

Assign and Configure Branch Server Formulas

Before you configure the branch server, ensure you have decided on networking topology, and know the Salt ID of the branch server.

The branch server can be configured automatically using the `retail_branch_init` command, as shown in this section. If you prefer to manually configure the branch server, you can do so using formulas. For more information about formulas, see [**Retail > Retail-formulas-intro >**].

Procedure: Configuring Branch Server Formulas With a Helper Script

1. Branch server configuration is performed using the `retail_branch_init` command:

```
retail_branch_init <branch_server_salt_id>
```

This command will configure branch server formulas with recommended values. You can use the `retail_branch_init --help` command for additional options.

2. Verify that your changes have been configured correctly by checking the SUSE Manager Web UI branch server system formulas.
3. Apply highstate on the branch server. You can do this through the Web UI, or by running this command:

```
salt <branch_server_salt_id> state.apply
```

Synchronize Images to the Branch Server

The OS image you use on the SUSE Manager server must be synchronized for use on the branch server. You can do this with the Salt `image-sync` tool.

Procedure: Synchronizing Images to the Branch Server

1. On the SUSE Manager server, run this command:

```
salt <branch_server_salt_id> state.apply image-sync
```

2. The image details will be transferred to `/srv/saltboot` on the branch server.

Terminals Based on SLES 11 SP 3

POS Terminals based on SUSE Linux Enterprise Server 11 SP 3 can be deployed in much the same way as other terminals, with a few differences.

- You must use the SLES 11 template
- SLES 11 images need to be activated with the **SLES11 SP3 i586** and **SLEPOS 11 SP3 i586** channels



Ensure that SLES 11 images are built on the SLES 11 build host, and SLES 12 images are built on the SLES 12 build host. Building on the incorrect build host will cause your build to fail.



If you are building images for SLES 11 using profiles from an HTTPS git repository that uses TLS 1.0 or greater, it will fail. SLES 11 does not support later versions of TLS. You will need to clone the repository locally in order to use it for building.

Deploy Terminals

When you have the SUSE Manager Server and Branch Server set up, you are ready to deploy point-of-service terminals by following these steps:

1. Create hardware type groups
2. Assign and configure the Saltboot formula for each hardware type group
3. Synchronize images to the branch server
4. Deploy images to the terminals

Each procedure is detailed in this section.

If you have many terminals, and would prefer this to be handled with a script, see [**Retail > Retail-mass-config >**].

Before terminals can be deployed, ensure you have prepared a Saltboot-based operating system image. For how to build OS images, see [**Administration > Image-management >**].



After you have registered new terminals, always check the SUSE Manager Web UI to ensure your terminals have connected successfully to the branch server, and not directly to the SUSE Manager Server by mistake.

Create A Hardware Type Group

Each terminal requires a specific hardware type, which contains information about the product name and terminal manufacturer. However, at the beginning, the SUSE Manager database does not have this information. To tell SUSE Manager what image to deploy on each terminal, you can set hardware type groups. After you have created your new hardware type group, you can apply the Saltboot formula to the group and configure it for your environment.

Hardware types allow you to group devices according to manufacturer and device name. Then, all devices of a particular type can be managed as one.

Empty profiles can be assigned to a hardware type group either before or after registration. If an empty profile is not assigned to a hardware type group before registration, it will be assigned to group that best matches the product information available to it.

For this procedure, you will require the system manufacturer name and product name for your terminal.

Procedure: Creating a Hardware Type Group

1. Determine the hardware type group name. Prefix the name with **HWTYPED:**, followed by the system manufacturer name and product name, separated by a hyphen. For example:

```
HWTYPED:POSVendor-Terminal1
```



Only use colons (:), hyphens (-) or underscores (_) in hardware type group names. Spaces and other non-alphanumeric characters will be removed when the name is processed.

2. In the SUSE Manager Web UI, navigate to **Systems > System Groups**, and click the **[Create Group]** button.
3. In the **Create System Group** dialog, create a new system group, using the hardware type group name you created earlier.

Assign and Configure the Saltboot Formula for Each Hardware Type Group

Each hardware type group must have the Saltboot formula applied.

Procedure: Assigning the Saltboot Formula

1. Open the details page for your new hardware type group, and navigate to the **Formulas** tab.
2. Select the Saltboot formula and click **[Save]**.

3. Navigate to the **Formulas** > **Saltboot** tab.
4. Configure the Saltboot formula according to the instructions in [**Retail** > **Retail-formulas-intro** >].

Synchronize Images to the Branch Server

Procedure: Synchronizing Images to the Branch Server

1. On the SUSE Manager server, run this command:

```
salt <branch_server_salt_id> state.apply image-sync
```

Using a SUSE Linux Enterprise Server11 SP3 32-bit based images

If you have 32-bit machines included in your branch, then you must use a 32-bit boot image as a default boot image.



If 32-bit boot image is not used as a default boot image, 32-bit terminals will be unable to boot and operate properly.

You can check the available boot images and their architecture from the command line:

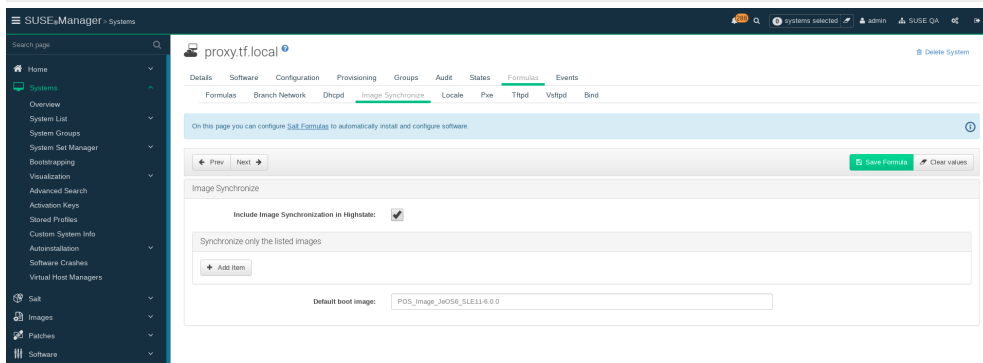
```
salt <branch_server_salt_id> pillar.item boot_images
```

Output:

```
POS_Image_JeOS6-6.0.0:
-----
  arch:
    x86_64
  ...
legacy-6.0.0:
-----
  arch:
    i686
```

In this example, the **legacy-6.0.0** boot image is 32-bit.

You can set the default boot image in the **Image Synchronization** formula on the branch server, by adding the chosen boot image name to the **Default boot image** field. For more information about **Image Synchronization** formula, see [**Salt** > **Formula-imagesync** >].



Deploy Images to the Terminals

Procedure: Deploying Images to the Terminals

1. Power on your POS terminals.
2. The branch server will bootstrap the terminals according to the data you have provided.

Terminal Names

Terminals can be named according to certain parameters, which can make it easier to match the physical device with its record in the SUSE Manager Web UI.

By default, terminals are named according to their hardware type. If the terminal IP address can be resolved to the hostname, those details will be used to name the terminal instead.

You can change this behavior by changing this kernel parameter in the PXE formula settings:

```
DISABLE_HOSTNAME_ID = 1
```

For more information about the PXE formula, see [[Salt > Formula-pxe >](#)].

Naming by Hardware Type

Terminal names that are derived from the hardware type use this format:

```
BranchID.Manufacturer-ProductName-SerialNumber-UniqueID
```

For example:

```
B002.TOSHIBA-6140100-41BA03X-c643
```

The branch ID is the unique identifier for the branch server that the terminal is connected to. You can configure this value in the PXE formula settings for the branch server.

The manufacturer, product name, and serial number are provided by the terminal hardware BIOS. If the terminal does not provide a serial number, it will be omitted from the terminal name.

The unique ID is the first four characters of a generated machine identification number. You can disable this behavior by toggling the `DISABLE_UNIQUE_SUFFIX` parameter in the PXE formula settings.

For more information about the PXE formula, see [[Salt > Formula-pxe >](#)].

Naming by Hostname

Terminal names that are derived from the hostname use this format:

```
BranchID.FQDN-UniqueID
```

For example:

```
B002.terminal.example.com-c643
```

The `BranchID` is the unique identifier for the branch server that the terminal is connected to. You can configure this value in the PXE formula settings for the branch server.

The `FQDN` is the fully-qualified domain name of the terminal.

The `UniqueID` is the first four characters of a generated machine identification number. You can disable this behavior by toggling the `DISABLE_UNIQUE_SUFFIX` parameter in the PXE formula settings.

For more information about the PXE formula, see [[Salt > Formula-pxe >](#)].

Assign Hostnames to Terminals

If you want terminal names to be derived from the hostname, you will need to ensure your terminals have a static hostname. This requires a static IP address to be able to resolve the static hostname.

There are a number of different ways to assign hostnames to terminals. This section describes how to do this when DNS and DHCP services are managed by the branch server.

Procedure: Assigning IP Address and Hostname with Formulas

1. In the DHCP formula settings, navigate to [Hosts with Static IP Address](#) and click **[Add Item]**. For more information on the DHCP formula, see [[Salt > Formula-dhcpd >](#)].
2. In the `Hostname` field, type the hostname of the branch server.
3. In the `IP Address` field, type the static IP address for the terminal. Ensure the IP address is within the range used by the branch server.
4. In the `Hardware Type and Address` field, type the hardware type and address in this format:

```
ethernet <terminal_MAC_address>
```

5. OPTIONAL: For multiple terminals, click **[Add Item]** and fill in the details for each terminal.
6. Click **[Save Formula]** to save the changes.
7. In the Bind formula settings, navigate to the A records of the appropriate non-reverse zone, and click **[Add Item]**. For more information on the bind formula, see **[Salt > Formula-bind >]**.
8. In the **Hostname** field, type the hostname of the branch server.
9. In the **IP Address** field, type the static IP address you assigned to the terminal in the DHCP formula settings.
10. OPTIONAL: For multiple terminals, click **[Add Item]** and fill in the details for each terminal.
11. Click **[Save Formula]** to save the changes.
12. Apply the highstate on the branch server to apply the changes.



If the terminal was previously registered using a name based on the hardware type instead of the hostname, you will need to delete the previous registration. When you re-register the terminal, use the new terminal name.

Procedure: Assigning IP Address and Hostname with YAML

1. At the command prompt on the branch server, export a YAML configuration file:

```
retail_yaml --to-yaml retail.yaml
```

2. Open the YAML file and navigate to the end of the branch server section. Add a new **terminals** section if it does not already exist.
3. Add the IP address, MAC address, and hardware type for the terminal, using this format:

```
$hostname:
  IP: <IP_Address>
  hwAddress: <MAC_Address>
  hwtype: <HWTYPE_Group_name_without_HWTYPE:_prefix>
```

4. Import the modified YAML file:

```
retail_yaml --from-yaml retail.yaml
```

5. Apply the highstate on the branch server to apply the changes.



If the terminal was previously registered using a name based on the hardware type instead of the hostname, you will need to delete the previous registration. When you re-register the terminal, use the new terminal name.

For more information about using YAML configuration files, see **[Retail > Retail-mass-config >]**.

Rate Limiting Terminals

Salt is able to run commands in parallel on a large number of terminals. This can potentially create heavy load on your infrastructure. You can use rate-limiting parameters to control the load in your environment.

For more information about rate limiting on terminals, see [**Salt > Salt-rate-limiting >**].

Troubleshooting

Sometimes when attempting to reboot a terminal after attempting to apply the Saltboot formula, the terminal will hang at the boot screen. This can be caused by a presence ping timeout value being set at a value that is too low. You can adjust the presence ping timeout value to fix this problem.

For more information about rate limiting on terminals, see [**Salt > Salt-rate-limiting >**].

Introduction to Retail Formulas

Formulas are pre-written Salt states, that are used to configure your SUSE Manager for Retail installation.

You can use the SUSE Manager Web UI to apply common SUSE Manager formulas. For the most commonly used formulas, see [**Salt > Formulas-intro >**].

Alternatively, you can use pre-written formulas as a starting point for your own custom formulas. Pre-written formulas are available from <https://github.com/saltstack-formulas>. For more information on custom formulas, see [**Salt > Formulas-custom >**].

All formulas must be accurately configured for your SUSE Manager for Retail installation to function correctly. If you are unsure of the correct formula configuration details, run the `retail_branch_init` command before you begin to create the recommended formula configuration. You can then manually edit the formulas as required.



State and Formula Name Collisions

If a formula uses the same name as an existing Salt state, the two names will collide, and could result in the formula being used instead of the state. Always check the names of states and formulas to avoid name collisions.

Most formulas can be updated using the SUSE Manager Web UI. When you have made changes to your formula, ensure you apply the highstate. The highstate propagates your changes to the appropriate services.

Administration

This sections contains notes on administering your SUSE Manager for Retail installation. For general administration tasks, see the SUSE Manager documentation at <https://documentation.suse.com/suma/4.0/>.

Mass Configuration

Mass configuration is possible with branch servers and terminals.

Branch Server Mass Configuration

Branch servers are configured individually using formulas. If you are working in an environment with many branch servers, you might find it easier to configure branch servers automatically with a pre-defined configuration file, rather than configuring each one individually.



Before working with the mass configuration tool, back up the existing branch servers configuration.

The Mass configuration tool overwrites the existing configuration with data specified in the provided YAML file.

The Mass configuration tool does not support all possible formula configurations. Always make sure on a small sample, that the mass configuration tool can configure systems as expected.

Configure Multiple Branch Servers

Configuring multiple branch servers requires the `python-susemanager-retail` package, which is provided with SUSE Manager for Retail. Install the `python-susemanager-retail` package on the SUSE Manager server.

Procedure: Configuring Multiple Branch Servers

1. Create a YAML file describing the infrastructure you intend to install. For an example YAML file, see [retail-mass-config-yaml.pdf](#).
2. On a clean SUSE Manager installation, import the YAML file you have created:

```
retail_yaml --from-yaml filename.yaml
```

See the `retail_yaml --help` output for additional options.

3. In the SUSE Manager Web UI, check that your systems are listed and displaying correctly, and the formulas you require are available.
4. Create activation keys for each of your branch servers, connect them using bootstrap, and configure them as proxy servers. For more information, see [**Retail** > **Retail-install-unified** >].
5. In the **States** tab, click [**Apply Highstate**] to deploy your configuration changes for each branch server.

If you need to change your configuration, you can edit the YAML file at any time, and use the `retail_yaml --from-yaml` command to upload the new configuration.

Use empty profiles together with activation keys to onboard all the systems of your infrastructure. Use an activation key to assign the channels listed in [**Retail > Retail-install-setup >**].

Terminal Mass Configuration

If you are working in an environment with many terminals, you might find it easier to configure the terminals automatically with a pre-defined configuration file, rather than configuring each terminal individually.

You will need to have your infrastructure planned out ahead of time, including the IP addresses, hostnames, and domain names of branch servers and terminals. You will also require the hardware (MAC) addresses of each terminal.



The settings specified in the configuration file cannot always be successfully applied. In cases where there is a conflict, SUSE Manager will ignore the request in the file. This is especially important when designating hostnames. You should always check that the details have been applied as expected after using this configuration method.

Configure Multiple Terminals

Procedure: Configuring Multiple Terminals

1. Create a YAML file describing the infrastructure you intend to install, specifying the hardware address for each terminal. For an example YAML file, see [retail-mass-config-yaml.pdf](#).
2. On a clean SUSE Manager installation, import the YAML file you have created:

```
retail_yaml --from-yaml filename.yaml
```

See the `retail_yaml --help` output for additional options.

3. In the SUSE Manager Web UI, check that your systems are listed and displaying correctly, and the formulas you require are available.
4. Create activation keys for each of your branch servers, connect them using bootstrap, and configure them as proxy servers. For more information, see [**Retail > Retail-install-unified >**].
5. In the **States** tab, click [**Apply Highstate**] to deploy your configuration changes for each branch server.
6. Connect your terminals according to your infrastructure plan.

If you need to change your configuration, you can edit the YAML file at any time, and use the `retail_yaml --from-yaml` command to upload the new configuration.

Export Configuration to Mass Configuration File

If you already have a configuration that you would like to export to a YAML file, use:

```
retail_yaml --to-yaml filename.yaml
```

This can be a good way to create a basic mass configuration file. However, it is important to check the file before using it, because some mandatory configuration entries may be missing.



When you are designing your configuration and creating the YAML file, ensure the branch server ID matches the fully qualified hostname, and the Salt ID. If these do not match, the bootstrap script could fail.

Example YAML File for Mass Configuration

You can use the `retail_yaml` command to import configuration parameters from a manually prepared YAML file. This section contains YAML example file with comments.

Listing 1. Example: YAML Mass Terminal Configuration File

```
branches:
# there are 2 possible setups: with / without dedicated NIC
#
# with dedicated NIC
branchserver1.branch1.cz:      # salt ID of branch server
  branch_prefix: branch1      # optional, default guessed from salt id
  server_name: branchserver1   # optional, default guessed from salt id
  server_domain: branch1.cz    # optional, default guessed from salt id
  nic: eth1                    # nic used for connecting terminals, default taken from hw
info in SUMA
  dedicated_nic: true          # set to true if the terminals are on separate network
  salt_cname: branchserver1.branch1.cz # hostname of salt master / broker for
terminals, mandatory
  configure_firewall: true     # modify firewall configuration
  branch_ip: 192.168.2.1       # default for dedicated NIC: 192.168.1.1
  netmask: 255.255.255.0       # default for dedicated NIC: 255.255.255.0
  dyn_range:                   # default for dedicated NIC: 192.168.1.10 - 192.168.1.250
    - 192.168.2.10
    - 192.168.2.250
# without dedicated NIC
# the DHCP formula is not used, DHCP is typically provided by a router
# the network parameters can be autodetected if the machine is already connected to SUSE
Manager
  branchserver2.branch2.cz:    # salt ID of branch server
  branch_prefix: branch2       # optional, default guessed from salt id
  server_name: branchserver2    # optional, default guessed from salt id
  server_domain: branch2.cz     # optional, default guessed from salt id
  salt_cname: branchserver2.branch1.cz # FQDN of salt master / broker for terminals,
mandatory
  branch_ip: 192.168.2.1       # optional, default taken from SUMA data if the machine is
registered
  netmask: 255.255.255.0       # optional, default taken from SUMA data if the machine is
registered
  exclude_formulas:            # optional, do not configure listed formulas
    - dhcp                     # without dedicated NIC the dhcp service is typically
provided by a router
  hwAddress: 11:22:33:44:55:66 # optional, required to connect pre-configured entry with
particular machine
                                # during onboarding
terminals:                      # configuration of static terminal entries
  hostname1:                     # hostname
    hwAddress: aa:aa:aa:bb:bb:bb # required as unique id of a terminal
    IP: 192.168.2.50             # required for static dhcp and dns entry
```



```

    saltboot:                # optional, alternative 1: configure terminal-specific
pillar data
  partitioning:              # partitioning pillar as described in saltboot
documentation
  disk1:
    device: /dev/sda
    disklabel: msdos
    partitions:
      p1:
        flags: swap
        format: swap
        size_MiB: 2000.0
      p2:
        image: POS_Image_JeOS6
        mountpoint: /
    type: DISK
  hostname2:                 # hostname
  hwAddress: aa:aa:aa:bb:bb:cc # required as unique id of a terminal
  IP: 192.168.2.51           # required for static dhcp and dns entry
  hwtype: IBM CORPORATION-4838910 # optional, alternative 2: assign the terminal to
hwtype group
  # if neither of hwtype nor saltboot is specified, a group is assigned according to
hwtype
  # reported by bios on the first boot
hwtypes:
  IBM CORPORATION-4838910:    # HWTYP string (manufacturer-model) as returned by bios
    description: 4838-910     # freetext description
  saltboot:
    partitioning:            # partitioning pillar as described in saltboot documentation
    disk1:
      device: /dev/sda
      disklabel: msdos
      partitions:
        p1:
          flags: swap
          format: swap
          size_MiB: 1000.0
        p2:
          image: POS_Image_JeOS6
          mountpoint: /
      type: DISK
  TOSHIBA-6140100:
    description: HWTYP:TOSHIBA-6140100
  saltboot:
    partitioning:
    disk1:
      device: /dev/sda
      disklabel: msdos
      partitions:
        p1:
          flags: swap
          format: swap
          size_MiB: 1000.0
        p2:
          image: POS_Image_JeOS6
          mountpoint: /
      type: DISK

```

Delta Images

If you have very large images that you need to synchronize to the branch server, you can use delta images to save network bandwidth.

A delta image contains only the differences between two regular images. If there are only a few changes

between two images, the delta image can be very small. Synchronizing a delta image to the branch consumes less network bandwidth but it requires some extra hardware resources on the branch server to rebuild the installable image.

Building Delta Images

The `retail_create_delta` tool creates a delta image on the SUSE Manager server. The tool uses `xdelta3` internally.

Use the name and the version strings of the target and the source image as parameters to the command. The format of the parameters must be `<NAME>-<VERSION>` and they must correspond to the image names and versions available in the pillar. For example, if the pillar contains:

```
images:
  POS_Image_JeOS6:
    6.0.0:
      ...
    6.0.1:
      ...
  POS_Image_Graphical6:
    6.0.0:
      ...
```

Then the `retail_create_delta` command is:

```
retail_create_delta POS_Image_JeOS6-6.0.1 POS_Image_JeOS6-6.0.0
```

This command will generate the delta image between version 6.0.0 and version 6.0.1. The resulting delta file is saved in `/srv/www/os-images` and the corresponding pillar file in `/srv/susemanager/pillar_data/images/`.

Tuning Delta Generation

Performance tuning is possible with the `-B <VALUE>` option, which is passed to `xdelta3`. With higher values you achieve smaller deltas at the cost of higher memory requirements. For more information, see the `xdelta3` documentation (`man xdelta3`).

Image Synchronizing to the Branch Server

When an image is synchronized to the branch server, the `image-sync-formula` first checks whether the source image is available on the branch server. If the source image is available, the delta will be downloaded to save network bandwidth.

Retail Migration

This section provides instructions for migrating SUSE Linux Enterprise Point of Service 11, SUSE Manager for Retail 3.1, or SUSE Manager for Retail 3.2 to SUSE Manager for Retail 4.0.

Before You Migrate

This document is intended to guide you through migration your SUSE Linux Enterprise Point of Service or older SUSE Manager for Retail installation (3.1 or 3.2) to the newest version of SUSE Manager for Retail.

This document is divided into scenarios. Pick the scenario that best suits your environment, and follow the instructions in that section to migrate your installation.



Ensure your existing installation is fully updated, and that you have performed a backup, before you begin your migration.

Prepare to Migrate from SUSE Linux Enterprise Point of Service

SUSE Linux Enterprise Point of Service cannot be upgraded directly to SUSE Manager for Retail, so the migration process requires you to perform some manual configuration. To assist you in the migration, as much information as possible about the existing hardware configuration and network infrastructure is recorded. Then this information is used for rebuilding the new SUSE Manager for Retail installation.

In some cases, this will require a lengthy downtime to perform the migration. If you are not able to manage downtime, you can install new servers and run them in parallel to the existing ones while you perform the migration. This is especially relevant for large installations.

It is possible to run a SLEPOS Admin server and a SUSE Manager server in parallel. In such a scenario, branches that have been migrated will run on the SUSE Manager server, while those that have not yet been migrated can continue to run on the SLEPOS Admin server. This includes all operations, such as adding new terminals, or building and deploying new images.

However, if you run network services (especially DHCP) on the branch servers, you will not be able to run both old and new branch servers in parallel on the same branch, because they can conflict with each other. This can result in multiple terminals having the same IP address, or terminals randomly assigned to different branch servers. If you need to migrate in this environment, and you want to configure a new branch server while the branch is still running on old infrastructure, make sure that the new branch server is not connected to the network with the terminals.

If your branch server does not provide DHCP services, you can configure the new one in parallel and, when you are ready, change the configuration of your DHCP server from the old to the new branch server.

Migrate SUSE Linux Enterprise Point of Service 11 to SUSE Manager for Retail

This section describes migrating from an existing SUSE Linux Enterprise Point of Service 11 installation to a new SUSE Manager installation. You can perform this migration all at once by creating a data dump in a single file, and then moving it to the new server.

Alternatively, you can perform the migration in stages by creating a data dump for each branch, and moving them to the new server one by one. Importing and deploying the converted data can also be done in one or multiple steps, depending on your environment.

Migration with Complete Data Dump

In this procedure, you create a single data dump in an XML file, convert it to YAML, and migrate it to the new infrastructure all at once.

1. Install a SUSE Manager for Retail server 4.0. For more information, see [**Retail > Retail-install-unified >**].
2. On the SLEPOS Admin server export all the data stored in LDAP to an XML file. Run this command as an administrator:

```
posAdmin --export --type xml --file dumpfile.xml
```

The resulting `dumpfile.xml` file will contain global information, with parts about images, hardware and its partitioning, and the description of the branch servers with networking data, services, and attached terminals.

3. Move the XML file to the newly created SUSE Manager server, and convert it to YAML:

```
retail_migration dumpfile.xml retail.yml
```

4. Review the generated YAML file (`retail.yml`) and adjust it as necessary. Consider `HWTYPE` group naming and image name and version changes in the partitioning data. Group names must not exceed the 56 character limit. You can shorten the names as needed, and the image names must match the images in SUSE Manager. The `--save-mapping` option can help you with this task.

Also check whether there are duplicate MAC addresses of the terminals in the generated YAML file. Choose which entry you want to keep. If there are duplicate MAC addresses, importing the YAML file will fail.



SUSE Linux Enterprise Point of Service images will not be migrated. You must rebuild the images using the OS image building functionality. For more information about building images, see [**Administration > Image-management >**].

5. Import the complete data (YAML) with:

```
retail_yaml --from-yaml retail.yaml
```

You can see statistical data while importing. Then check the results in the Web UI. In **Main Menu > Systems > Systems > All**, find empty profiles, and in **Main Menu > Systems > Groups**, the groups for the hardware configuration, the branches, servers, and terminals.

To finalize the branch server migration, you must install the branch server machines as Salt clients and bootstrap them as proxies. For more information about proxy installation, see [**Retail > Retail-install >**]. For more information about using an activation key to assign the required channels, see [**Retail > Retail-install-setup >**]. After onboarded to SUSE Manager, the branch servers machines are connected with the empty profiles (by FQDN), and so they will get the Retail configuration.

After all the branches are migrated, shutdown and remove the old SLEPOS Admin Server.

Migration with Branch by Branch Data Dump

In this procedure, you migrate the SLEPOS infrastructure and the branches one by one, first exporting and then importing.

1. Install a SUSE Manager for Retail server 4.0 For more information, see [**Retail > Retail-install-unified >**].
2. On every branch server:

```
posAdmin --export --type xml --file dumpfile.xml
```

These dumps will contain only the LDAP data of the branch, and any global data.

3. Similarly, you can export the LDAP data of every branch if you run the command on the Admin server with the branch credentials explicitly specified:

```
posAdmin --export --type xml --file dumpfile.xml --user $branch_dn \  
--password $password
```

For background information about SLEPOS branch server configuration, see https://documentation.suse.com/sle-pos/11-SP3/html/SLEPOS-guide/cha.slepos_branchserv.html.

4. Review the generated YAML file (**retail.yaml**) and adjust it as necessary. Consider **HWTYP**E group naming and image name and version changes in the partitioning data. You can shorten the names as needed, and the image names must match the images in SUSE Manager. The **--save-mapping** option can help you with this task.

Check whether there are duplicate MAC addresses of the terminals in the generated YAML file.

Choose which entry you want to keep. As long as there are duplicate MAC addresses, SUSE Manager will refuse importing the YAML file.



SUSE Linux Enterprise Point of Service images will not be migrated. You must rebuild the images using the OS image building functionality. For more information about building images, see [**Administration > Image-management >**].

The data can be imported branch by branch. For each branch perform the following steps:

1. Run the import command for one branch after the other:

```
retail_yaml --from-yaml retail.yaml --branch <branch_name>
```

Repeat the command for every branch.

2. To finalize each branch server migration, you must install the branch server machine as a Salt-based client and bootstrap it as a proxy. For more information about proxy installation, see [Installing and Registering](#). For more information about using an activation key to assign the required channels, see [Configuring Server](#). After onboarded to SUSE Manager for Retail, the branch server machine is connected with the empty profile (by FQDN), and so it will get the Retail configuration.
3. Apply Highstate on the branch server; this will happen automatically if [Configuration File Deployment](#) is enabled.
4. Boot the terminals of the branch.

After all the branches are migrated, shut down and remove the old SLEPOS Admin Server.

Converting XML to YAML

When you perform a migration using one of the methods in this chapter, one of the steps takes the XML data dump file from SUSE Linux Enterprise Point of Service, and converts it to a YAML file for SUSE Manager for Retail. The tool that performs this conversion has additional features, which are outlined in this section.

To validate the XML file before conversion, and print any errors:

```
retail_migration dumpfile.xml
```

To write a mapping file called `map.yaml`:

```
retail_migration dumpfile.xml --save-mapping map.yaml
```

The mapping file contains two dictionaries: `images`, which maps old SUSE Linux Enterprise Point of

Service images to new images built in SUSE Manager. . **groups**, which maps legacy SUSE Linux Enterprise Point of Service **scCashRegister** objects to SUSE Manager **HWTPE** groups. Group names must not exceed the 56 character limit.

The mapping file should be edited as required for your environment.

To perform a conversion using a mapping file:

```
retail_migration dumpfile.xml retail.yml --mapping map.yml
```

If you are performing a branch-by-branch migration, the resulting **retail.yml** file will contain a new version of SUSE Linux Enterprise Point of Service LDAP data. If you want to preserve any global changes in your SUSE Manager for Retail settings, remove the **global** hardware types from the resulting **retail.yml** file before importing it. Alternatively, you can import **retail.yml** using this command to import only the new systems and groups defined in the file, and leave any existing configuration settings untouched:

```
retail_yaml --only-new
```

What Next?

This document covers only a sub-section of information about your SUSE Manager for Retail installation. If you need further information or support, try one of these options.

More Documentation

For SUSE Manager documentation, visit <https://documentation.suse.com/suma/4.0/>.

For legacy SUSE Linux Enterprise Point of Service documentation, see <https://documentation.suse.com/sle-pos/11-SP3/>. For legacy SUSE Manager for Retail documentation, see <https://documentation.suse.com/suma-retail/3.2/>. Note, however, that SUSE Manager for Retail documentation supersedes this information.

Support

For personalized support, log in to your SUSE Customer Center account at <https://scc.suse.com/login>.

For assistance with planning and installing your SUSE Manager for Retail environment, contact the SUSE Consulting team.

GNU Free Documentation License

Copyright © 2000, 2001, 2002 Free Software Foundation, Inc. 51 Franklin St, Fifth Floor, Boston, MA 02110-1301 USA. Everyone is permitted to copy and distribute verbatim copies of this license document, but changing it is not allowed.

0. PREAMBLE

The purpose of this License is to make a manual, textbook, or other functional and useful document "free" in the sense of freedom: to assure everyone the effective freedom to copy and redistribute it, with or without modifying it, either commercially or noncommercially. Secondly, this License preserves for the author and publisher a way to get credit for their work, while not being considered responsible for modifications made by others.

This License is a kind of "copyleft", which means that derivative works of the document must themselves be free in the same sense. It complements the GNU General Public License, which is a copyleft license designed for free software.

We have designed this License in order to use it for manuals for free software, because free software needs free documentation: a free program should come with manuals providing the same freedoms that the software does. But this License is not limited to software manuals; it can be used for any textual work, regardless of subject matter or whether it is published as a printed book. We recommend this License principally for works whose purpose is instruction or reference.

1. APPLICABILITY AND DEFINITIONS

This License applies to any manual or other work, in any medium, that contains a notice placed by the copyright holder saying it can be distributed under the terms of this License. Such a notice grants a world-wide, royalty-free license, unlimited in duration, to use that work under the conditions stated herein. The "Document", below, refers to any such manual or work. Any member of the public is a licensee, and is addressed as "you". You accept the license if you copy, modify or distribute the work in a way requiring permission under copyright law.

A "Modified Version" of the Document means any work containing the Document or a portion of it, either copied verbatim, or with modifications and/or translated into another language.

A "Secondary Section" is a named appendix or a front-matter section of the Document that deals exclusively with the relationship of the publishers or authors of the Document to the Document's overall subject (or to related matters) and contains nothing that could fall directly within that overall subject. (Thus, if the Document is in part a textbook of mathematics, a Secondary Section may not explain any mathematics.) The relationship could be a matter of historical connection with the subject or with related matters, or of legal, commercial, philosophical, ethical or political position regarding them.

The "Invariant Sections" are certain Secondary Sections whose titles are designated, as being those of Invariant Sections, in the notice that says that the Document is released under this License. If a section does not fit the above definition of Secondary then it is not allowed to be designated as Invariant. The Document may contain zero Invariant Sections. If the Document does not identify any Invariant Sections then there are none.

The "Cover Texts" are certain short passages of text that are listed, as Front-Cover Texts or Back-Cover Texts, in the notice that says that the Document is released under this License. A Front-Cover Text may be at most 5 words, and a Back-Cover Text may be at most 25 words.

A "Transparent" copy of the Document means a machine-readable copy, represented in a format whose

specification is available to the general public, that is suitable for revising the document straightforwardly with generic text editors or (for images composed of pixels) generic paint programs or (for drawings) some widely available drawing editor, and that is suitable for input to text formatters or for automatic translation to a variety of formats suitable for input to text formatters. A copy made in an otherwise Transparent file format whose markup, or absence of markup, has been arranged to thwart or discourage subsequent modification by readers is not Transparent. An image format is not Transparent if used for any substantial amount of text. A copy that is not "Transparent" is called "Opaque".

Examples of suitable formats for Transparent copies include plain ASCII without markup, Texinfo input format, LaTeX input format, SGML or XML using a publicly available DTD, and standard-conforming simple HTML, PostScript or PDF designed for human modification. Examples of transparent image formats include PNG, XCF and JPG. Opaque formats include proprietary formats that can be read and edited only by proprietary word processors, SGML or XML for which the DTD and/or processing tools are not generally available, and the machine-generated HTML, PostScript or PDF produced by some word processors for output purposes only.

The "Title Page" means, for a printed book, the title page itself, plus such following pages as are needed to hold, legibly, the material this License requires to appear in the title page. For works in formats which do not have any title page as such, "Title Page" means the text near the most prominent appearance of the work's title, preceding the beginning of the body of the text.

A section "Entitled XYZ" means a named subunit of the Document whose title either is precisely XYZ or contains XYZ in parentheses following text that translates XYZ in another language. (Here XYZ stands for a specific section name mentioned below, such as "Acknowledgements", "Dedications", "Endorsements", or "History".) To "Preserve the Title" of such a section when you modify the Document means that it remains a section "Entitled XYZ" according to this definition.

The Document may include Warranty Disclaimers next to the notice which states that this License applies to the Document. These Warranty Disclaimers are considered to be included by reference in this License, but only as regards disclaiming warranties: any other implication that these Warranty Disclaimers may have is void and has no effect on the meaning of this License.

2. VERBATIM COPYING

You may copy and distribute the Document in any medium, either commercially or noncommercially, provided that this License, the copyright notices, and the license notice saying this License applies to the Document are reproduced in all copies, and that you add no other conditions whatsoever to those of this License. You may not use technical measures to obstruct or control the reading or further copying of the copies you make or distribute. However, you may accept compensation in exchange for copies. If you distribute a large enough number of copies you must also follow the conditions in section 3.

You may also lend copies, under the same conditions stated above, and you may publicly display copies.

3. COPYING IN QUANTITY

If you publish printed copies (or copies in media that commonly have printed covers) of the Document, numbering more than 100, and the Document's license notice requires Cover Texts, you must enclose the copies in covers that carry, clearly and legibly, all these Cover Texts: Front-Cover Texts on the front cover,

and Back-Cover Texts on the back cover. Both covers must also clearly and legibly identify you as the publisher of these copies. The front cover must present the full title with all words of the title equally prominent and visible. You may add other material on the covers in addition. Copying with changes limited to the covers, as long as they preserve the title of the Document and satisfy these conditions, can be treated as verbatim copying in other respects.

If the required texts for either cover are too voluminous to fit legibly, you should put the first ones listed (as many as fit reasonably) on the actual cover, and continue the rest onto adjacent pages.

If you publish or distribute Opaque copies of the Document numbering more than 100, you must either include a machine-readable Transparent copy along with each Opaque copy, or state in or with each Opaque copy a computer-network location from which the general network-using public has access to download using public-standard network protocols a complete Transparent copy of the Document, free of added material. If you use the latter option, you must take reasonably prudent steps, when you begin distribution of Opaque copies in quantity, to ensure that this Transparent copy will remain thus accessible at the stated location until at least one year after the last time you distribute an Opaque copy (directly or through your agents or retailers) of that edition to the public.

It is requested, but not required, that you contact the authors of the Document well before redistributing any large number of copies, to give them a chance to provide you with an updated version of the Document.

4. MODIFICATIONS

You may copy and distribute a Modified Version of the Document under the conditions of sections 2 and 3 above, provided that you release the Modified Version under precisely this License, with the Modified Version filling the role of the Document, thus licensing distribution and modification of the Modified Version to whoever possesses a copy of it. In addition, you must do these things in the Modified Version:

- A. Use in the Title Page (and on the covers, if any) a title distinct from that of the Document, and from those of previous versions (which should, if there were any, be listed in the History section of the Document). You may use the same title as a previous version if the original publisher of that version gives permission.
- B. List on the Title Page, as authors, one or more persons or entities responsible for authorship of the modifications in the Modified Version, together with at least five of the principal authors of the Document (all of its principal authors, if it has fewer than five), unless they release you from this requirement.
- C. State on the Title page the name of the publisher of the Modified Version, as the publisher.
- D. Preserve all the copyright notices of the Document.
- E. Add an appropriate copyright notice for your modifications adjacent to the other copyright notices.
- F. Include, immediately after the copyright notices, a license notice giving the public permission to use the Modified Version under the terms of this License, in the form shown in the Addendum below.
- G. Preserve in that license notice the full lists of Invariant Sections and required Cover Texts given in the Document's license notice.

-
- H. Include an unaltered copy of this License.
 - I. Preserve the section Entitled "History", Preserve its Title, and add to it an item stating at least the title, year, new authors, and publisher of the Modified Version as given on the Title Page. If there is no section Entitled "History" in the Document, create one stating the title, year, authors, and publisher of the Document as given on its Title Page, then add an item describing the Modified Version as stated in the previous sentence.
 - J. Preserve the network location, if any, given in the Document for public access to a Transparent copy of the Document, and likewise the network locations given in the Document for previous versions it was based on. These may be placed in the "History" section. You may omit a network location for a work that was published at least four years before the Document itself, or if the original publisher of the version it refers to gives permission.
 - K. For any section Entitled "Acknowledgements" or "Dedications", Preserve the Title of the section, and preserve in the section all the substance and tone of each of the contributor acknowledgements and/or dedications given therein.
 - L. Preserve all the Invariant Sections of the Document, unaltered in their text and in their titles. Section numbers or the equivalent are not considered part of the section titles.
 - M. Delete any section Entitled "Endorsements". Such a section may not be included in the Modified Version.
 - N. Do not retitle any existing section to be Entitled "Endorsements" or to conflict in title with any Invariant Section.
 - O. Preserve any Warranty Disclaimers.

If the Modified Version includes new front-matter sections or appendices that qualify as Secondary Sections and contain no material copied from the Document, you may at your option designate some or all of these sections as invariant. To do this, add their titles to the list of Invariant Sections in the Modified Version's license notice. These titles must be distinct from any other section titles.

You may add a section Entitled "Endorsements", provided it contains nothing but endorsements of your Modified Version by various parties—for example, statements of peer review or that the text has been approved by an organization as the authoritative definition of a standard.

You may add a passage of up to five words as a Front-Cover Text, and a passage of up to 25 words as a Back-Cover Text, to the end of the list of Cover Texts in the Modified Version. Only one passage of Front-Cover Text and one of Back-Cover Text may be added by (or through arrangements made by) any one entity. If the Document already includes a cover text for the same cover, previously added by you or by arrangement made by the same entity you are acting on behalf of, you may not add another; but you may replace the old one, on explicit permission from the previous publisher that added the old one.

The author(s) and publisher(s) of the Document do not by this License give permission to use their names for publicity for or to assert or imply endorsement of any Modified Version.

5. COMBINING DOCUMENTS

You may combine the Document with other documents released under this License, under the terms

defined in section 4 above for modified versions, provided that you include in the combination all of the Invariant Sections of all of the original documents, unmodified, and list them all as Invariant Sections of your combined work in its license notice, and that you preserve all their Warranty Disclaimers.

The combined work need only contain one copy of this License, and multiple identical Invariant Sections may be replaced with a single copy. If there are multiple Invariant Sections with the same name but different contents, make the title of each such section unique by adding at the end of it, in parentheses, the name of the original author or publisher of that section if known, or else a unique number. Make the same adjustment to the section titles in the list of Invariant Sections in the license notice of the combined work.

In the combination, you must combine any sections Entitled "History" in the various original documents, forming one section Entitled "History"; likewise combine any sections Entitled "Acknowledgements", and any sections Entitled "Dedications". You must delete all sections Entitled "Endorsements".

6. COLLECTIONS OF DOCUMENTS

You may make a collection consisting of the Document and other documents released under this License, and replace the individual copies of this License in the various documents with a single copy that is included in the collection, provided that you follow the rules of this License for verbatim copying of each of the documents in all other respects.

You may extract a single document from such a collection, and distribute it individually under this License, provided you insert a copy of this License into the extracted document, and follow this License in all other respects regarding verbatim copying of that document.

7. AGGREGATION WITH INDEPENDENT WORKS

A compilation of the Document or its derivatives with other separate and independent documents or works, in or on a volume of a storage or distribution medium, is called an "aggregate" if the copyright resulting from the compilation is not used to limit the legal rights of the compilation's users beyond what the individual works permit. When the Document is included in an aggregate, this License does not apply to the other works in the aggregate which are not themselves derivative works of the Document.

If the Cover Text requirement of section 3 is applicable to these copies of the Document, then if the Document is less than one half of the entire aggregate, the Document's Cover Texts may be placed on covers that bracket the Document within the aggregate, or the electronic equivalent of covers if the Document is in electronic form. Otherwise they must appear on printed covers that bracket the whole aggregate.

8. TRANSLATION

Translation is considered a kind of modification, so you may distribute translations of the Document under the terms of section 4. Replacing Invariant Sections with translations requires special permission from their copyright holders, but you may include translations of some or all Invariant Sections in addition to the original versions of these Invariant Sections. You may include a translation of this License, and all the license notices in the Document, and any Warranty Disclaimers, provided that you also include the original English version of this License and the original versions of those notices and disclaimers. In

case of a disagreement between the translation and the original version of this License or a notice or disclaimer, the original version will prevail.

If a section in the Document is Entitled "Acknowledgements", "Dedications", or "History", the requirement (section 4) to Preserve its Title (section 1) will typically require changing the actual title.

9. TERMINATION

You may not copy, modify, sublicense, or distribute the Document except as expressly provided for under this License. Any other attempt to copy, modify, sublicense or distribute the Document is void, and will automatically terminate your rights under this License. However, parties who have received copies, or rights, from you under this License will not have their licenses terminated so long as such parties remain in full compliance.

10. FUTURE REVISIONS OF THIS LICENSE

The Free Software Foundation may publish new, revised versions of the GNU Free Documentation License from time to time. Such new versions will be similar in spirit to the present version, but may differ in detail to address new problems or concerns. See <http://www.gnu.org/copyleft/>.

Each version of the License is given a distinguishing version number. If the Document specifies that a particular numbered version of this License "or any later version" applies to it, you have the option of following the terms and conditions either of that specified version or of any later version that has been published (not as a draft) by the Free Software Foundation. If the Document does not specify a version number of this License, you may choose any version ever published (not as a draft) by the Free Software Foundation.

ADDENDUM: How to use this License for your documents

Copyright (c) YEAR YOUR NAME.

Permission is granted to copy, distribute and/or modify this document under the terms of the GNU Free Documentation License, Version 1.2 or any later version published by the Free Software Foundation; with no Invariant Sections, no Front-Cover Texts, and no Back-Cover Texts. A copy of the license is included in the section entitled "GNU Free Documentation License".

If you have Invariant Sections, Front-Cover Texts and Back-Cover Texts, replace the "with...Texts." line with this:

with the Invariant Sections being LIST THEIR TITLES, with the Front-Cover Texts being LIST, and with the Back-Cover Texts being LIST.

If you have Invariant Sections without Cover Texts, or some other combination of the three, merge those two alternatives to suit the situation.

If your document contains nontrivial examples of program code, we recommend releasing these examples in parallel under your choice of free software license, such as the GNU General Public License, to permit

their use in free software.